

Appendix A: Nutrient Neutrality Catchment Maps



Contains OS data © Crown Copyright and database right 2020

European protected sites requiring nutrient neutrality strategic solutions

Scale: 1:190,000

Component SSSIs of River Wensum SAC

- Local Authorities
- SSSI subject to nutrient neutrality strategy
- Nutrient neutrality SSSI catchment
- National Parks





Contains OS data © Crown Copyright and database right 2020

European protected sites requiring nutrient neutrality strategic solutions

Scale: 1:330,000

Component SSSIs of The Broads SAC

- Local Authorities
- SSSI subject to nutrient neutrality strategy
- Nutrient neutrality SSSI catchment



Appendix B: In-Combination Assessment

Plans and Policies	Plan Status	Summary of housing/employment	HRA Output and Key Considerations
Greater Norwich Authorities	The GNLP covers the three authorities of South Norfolk Council, Broadland Council and Norwich City Council. A review of the GNLP and supporting HRA documentation is provided in Section 2 of the HRA Regulation 19 Report.		
Local Plan for the Broads ¹	Adopted May 2019.	The Executive Area of the Broads Authority includes parts of Broadland District, South Norfolk District, North Norfolk District, Great Yarmouth Borough, Norwich City, and East Suffolk Council area. The local plan contains policies and site-specific policies. Housing delivery will be 286 dwellings / year.	<p>An HRA was undertaken in support of the Local Plan for the Broads². This focused on risk associated with new housing and the promotion of tourism, boating and water's edge development and navigation. LSEs considered included disturbance to wildlife, and deterioration of habitat, particularly through nutrient enrichment, arising or increasing as a result of the plan. The HRA noted the requirement for lower tier project level HRA for a number of projects promoted through the local plan.</p> <p>It concluded that the plan would not lead to adverse effects on European site integrity and would be compliant with the Habitats Regulations upon adoption.</p> <p>The combined impact of neighbouring authority growth, in-combination with the VHCAP, on air quality, hydrology and public access and disturbance impacts will be considered further in the HRA process.</p>

¹ Broads Authority. May 2019. Local Plan for the Broads Plan period 2015 to 2036. Available at: https://www.broads-authority.gov.uk/data/assets/pdf_file/0036/259596/Local-Plan-for-the-Broads.pdf [Date Accessed: 18/11/22]

² : Liley, D., Hoskin, R., Lake, S. and Panter, C. 2019. Habitats Regulations Assessment of the Local Plan for the Broads at Modifications stage. Unpublished report by Footprint Ecology.

Plans and Policies	Plan Status	Summary of housing/employment	HRA Output and Key Considerations
The Breckland Local Plan ³	Adopted 28 th November 2019.	<p>The Local Plan will provide for no less than 15,298 new homes between 2011 and 2036, an average of 612 dwellings per annum.</p> <p>For the period 2011 – 2036, 64 hectares of employment land will be allocated to allow for a range and choice of employment sites to meet economic need and demand</p>	<p>An HRA was undertaken in support of the Breckland Local Plan⁴. This drew on mitigation measures to protect the European sites such as buffer zones for Stone Curlew. It also recommended other mitigation measures for integration into the Plan in particular at Policy ENV02 and ENV03. It focused on the following impacts:</p> <ul style="list-style-type: none"> - Impacts of built development on stone curlew - Recreational disturbance to birds - Urbanisation effects on habitats - Air quality and road improvements - Water supply, water quality, wastewater discharge and flood risk <p>It concluded no adverse effects upon site integrity at any European site.</p> <p>The combined impact of neighbouring authority growth, in-combination with the VHCAP, on air quality, hydrology and public access and disturbance impacts will be considered further in the HRA process.</p>
Great Yarmouth Local Plan Part 2 ⁵	The Council submitted the Great Yarmouth Local Plan Part 2 to the Government on 31 July 2020 for independent examination.	Part 2 makes provision for 5,303 new homes over the plan period.	<p>An HRA was undertaken in support of the Local Plan Part 2⁷. It refers to the HRA undertaken for the Great Yarmouth Local Plan Part 1: the Core Strategy⁸. It draws on mitigation provided through the Great Yarmouth Borough Monitoring and Mitigation Strategy which was put in place at the time of the Core Strategy HRA. Following input to policy wording it concludes no adverse effects on site integrity.</p>

³ Breckland Council. 2019. Local Plan 2019. Available at: https://www.breckland.gov.uk/media/16659/Adopted-Breckland-Local-Plan/pdf/Local_Plan_2019.pdf?m=637520995029430000 [Date Accessed: 18/11/22]

⁴ Liley, D. & Hoskin, R. 2017. Habitat Regulations Assessment of the Breckland Local Plan Part 1 Publication Stage. Footprint Ecology, unpublished report for Breckland Council

⁵ Great Yarmouth Borough Council. 2020. Great Yarmouth Local Plan Part 2. Available at: https://www.great-yarmouth.gov.uk/media/5062/Local-Plan-Part-2---Final-Draft-Plan/pdf/Local_Plan_Part_2_Final_Draft_Plan.pdf [Date Accessed: 18/11/22]

⁷ Hoskin, R., Liley, D. & Caals, Z. 2019. Habitats Regulations Assessment of the Great Yarmouth Local Plan Part 2. Unpublished report for Great Yarmouth Borough Council.

⁸ Footprint Ecology. 2015. Habitats Regulations Assessment of the Great Yarmouth Local Plan - Core Strategy at Submission for Examination. Report for Great Yarmouth Borough Council.

Plans and Policies	Plan Status	Summary of housing/employment	HRA Output and Key Considerations
Great Yarmouth Core Strategy ⁶	The Core Strategy (Local Plan Part 1) was adopted in December 2015.		The combined impact of neighbouring authority growth, in-combination with the VHCAP, on air quality, hydrology and public access and disturbance impacts will be considered further in the HRA process.
East Suffolk District - Waveney Local Plan ⁹ (East Suffolk District comprises Waveney District Council and Suffolk Coastal District)	Adopted 20 th March 2019.	8,223 new homes	An HRA was undertaken in support of the local plan ¹⁰ . The HRA informed policy wording and recommended a mitigation approach for Minsmere – Walberswick SPA/SAC/Ramsar site and Benacre to Easton Bavents SPA/SAC, to mitigate for potential increased recreation pressure and disturbance of site interest features. Following incorporation of these measures it concluded no adverse effects on any European site integrity. The combined impact of neighbouring authority growth, in-combination with the VHCAP, on air quality, hydrology and public access and disturbance impacts will be considered further in the HRA process.
Babergh and Mid Suffolk Joint Local Plan ¹¹	Local Plan was formally submitted to the Secretary of State for Housing, Communities and Local	7,904 net additional dwellings (416 dwellings per annum) within the Babergh	An HRA was undertaken in support of the local plan ¹² . This focused on the following LSEs: - Habitat loss and fragmentation / land take by development;

⁶ Great Yarmouth Borough Council. 2015. Great Yarmouth Local Plan. Core Strategy 2013 – 2030. Available at: https://www.great-yarmouth.gov.uk/media/1884/Adopted-Local-Plan-Core-Strategy-December-2015/pdf/Local_Plan_Core_Strategy_Adopted_2015_NF.pdf [Date Accessed: 18/11/22]

⁹ East Suffolk Council. 2019. Waveney Local Plan. Covering the former Waveney Local Planning Authority Area. Available at: <https://www.eastsuffolk.gov.uk/assets/Planning/Waveney-Local-Plan/Adopted-Waveney-Local-Plan-including-Erratum.pdf> [Date Accessed: 18/11/22]

¹⁰ Hoskin, R. & Liley, D. 2018. Habitats Regulations Assessment of the Waveney Local Plan. Unpublished report for Waveney District Council.

¹¹ Babergh and Mid Suffolk Joint. 2020. Babergh and Mid Suffolk Joint Local Plan. Pre-Submission Regulation 19. Available at: <https://www.babergh.gov.uk/assets/Strategic-Planning/JLPExamination/CoreDocLibrary/A-SubmissionDocs/A01-Part-1-Objective-and-Strategic-Policies-Part-2-Local-Policies.pdf> [Date Accessed: 18/11/21]

¹² Place Services. 2020. Babergh and Mid Suffolk Joint Local Plan. Habitats Regulations Assessment. Available at: <https://www.babergh.gov.uk/assets/Strategic-Planning/JLPExamination/CoreDocLibrary/A-SubmissionDocs/A05-BMSDC-JLP-Reg-19-HRA-AA-Oct20.pdf> [Date Accessed: 18/11/22]

Plans and Policies	Plan Status	Summary of housing/employment	HRA Output and Key Considerations
	Government for independent Examination on 31 March 2021.	<p>district over the plan period (2018 – 2037).</p> <p>10,165 net additional dwellings (535 dwellings per annum) within the Mid Suffolk district over the plan period (2018 – 2037).</p>	<ul style="list-style-type: none"> - Loss of functionally linked land (land outside the SPA and Ramsar site); - Increase of any type of disturbance; - Changes in water availability, or water quality; - Changes in atmospheric pollution levels. <p>At the following European sites:</p> <ul style="list-style-type: none"> - Stour and Orwell Estuaries SPA - Stour and Orwell Estuaries Ramsar site - Deben Estuary SPA - Deben Estuary Ramsar site - Minsmere – Walberswick SPA - Minsmere – Walberswick Ramsar site - Minsmere to Walberswick Heaths & Marshes SAC - Redgrave and South Lopham Fens Ramsar site - Waveney & Lt Ouse Valley Fens SAC <p>It concluded that the Plan would not have any adverse effect on integrity (AEOI) on any European Sites, either alone or in combination with other plans and projects. It noted inclusion of mitigation including requirement for project level HRA.</p> <p>The combined impact of neighbouring authority growth, in-combination with the VHCAP, on air quality, hydrology and public access and disturbance impacts will be considered further in the HRA process.</p>
Norfolk County Council Minerals and Waste Local Plan Review ¹³	Regulation 18 consultation	<p>The M&WLPR includes a vision and strategic objectives for waste management and minerals development for the Plan period to 2036.</p> <p>It includes a spatial strategy (allocating sites) for new waste management facilities</p>	<p>The M&WLPR was supported by a draft HRA¹⁴. It applied a 5km study area for consideration of LSEs at European sites. It concluded no LSEs from any policies forming the plan, noting that developers wanting to extract mineral from specific sites or land within a preferred area or area of search contained in the Norfolk Minerals and Waste Local Plan will still need to apply for and be granted planning permission before mineral extraction can take place.</p> <p>The combined impact of minerals and waste allocations, in-combination with VHCAP growth, on air quality and hydrology will be considered further in the HRA process.</p>

¹³ Norfolk County Council. Minerals and Waste Local Plan Review. Available at: <https://norfolk.oc2.uk/document/49/4016#d4016> [Date Accessed: 18/11/22]

¹⁴ Norfolk County Council. 2019. Norfolk Minerals and Waste Local Plan Review. Draft Habitats Regulations Assessment. Available at: https://norfolk.oc2.uk/docfiles/50/draft_hra_task_1.pdf [Date Accessed: 18/11/22]

Plans and Policies	Plan Status	Summary of housing/employment	HRA Output and Key Considerations
		and new minerals development.	
Norfolk County Council Local Transport Plan 4 Strategy 2021 – 2036 ¹⁵	The plan was adopted by the County Council on the 19 th of July, 2022.	The plan aims to address issues such as air quality and carbon reduction and tackles infrastructure issues in relation to major road, bus and rail connections. It sets out a series of strategies and policies.	An HRA was not available at the time of writing. The combined impact of Local Transport Plan strategies, in-combination with VHCAP growth, on traffic related air quality will be considered further in the HRA process.
Anglian Water Water Resource Management Plan ¹⁶	Current	n/a	An HRA was prepared in support of this plan ¹⁷ . See detailed provided in Section 6.4 of the Regulation 18 HRA Report. This will be taken into consideration in the assessment of hydrology impacts.
Environment Agency Broadland Catchment Abstraction Licencing Strategy ¹⁸	Current	n/a	See detailed provided in Section 6.4 of the Regulation 18 HRA Report. This will be taken into consideration in the assessment of hydrology impacts.

¹⁵ Norfolk County Council. Norfolk County Council Local Transport Plan 4 Strategy 2021 – 2036. Available at: <https://www.norfolk.gov.uk/-/media/norfolk/downloads/what-we-do-and-how-we-work/policy-performance-and-partnerships/policies-and-strategies/roads-and-travel-policies/local-transport-plan-4-draft-strategy.pdf> [Date Accessed: 18/11/22]

¹⁶ Anglian Water. December 2019. Water Resource Management Plan.

¹⁷ Mott McDonald. 2019. Anglian Water - Water Resources Management Plan Habitats Regulations Assessment Task II: Appropriate Assessment Final for Publication.

¹⁸ Environment Agency. May 2017. Broadland Abstraction Licencing Strategy.

Plans and Policies	Plan Status	Summary of housing/employment	HRA Output and Key Considerations
Greater Norwich Water Cycle Study ¹⁹	n/a	n/a	See detailed provided in Section 6.4 of the Regulation 18 HRA Report. This will be taken into consideration in the assessment of hydrology impacts.
Anglian River Basin Management Plan ²⁰	Current	n/a	See detailed provided in Section 6.4 of the Regulation 18 HRA Report. An HRA was undertaken alongside the preparation of the RBMP ²¹ . This will be taken into consideration in the assessment of hydrology impacts.
Emerging Norfolk Green Infrastructure and Recreational Impact Avoidance and Mitigation Strategy ²²	n/a	n/a	See detailed provided in Section 6.5 of the Regulation 18 HRA Report. This will be taken into consideration in the assessment of public access and disturbance impacts.
Greater Norwich Infrastructure Plan, June 2022 ²³	n/a	n/a	See detailed provided in Section 6.5 of the Regulation 18 HRA Report. This will be taken into consideration in the assessment of public access and disturbance impacts.
Norwich Northern Distributor Link Road ²⁴	Timescales as follows: - Early 2021 – Outline Business Case completed and	The Norwich Western Link will connect the Broadland Northway, formerly known as the Northern Distributor Road (NDR), from the	Detailed HRA related information on the Norwich Northern Distributor Link Road is not currently available. The Norwich Northern Distributor Road will be subject to HRA at planning application stage. It is likely that the scheme would be a project with potentially serious effects (PPSE) as it would have the potential for a potentially serious effect upon on one or more

¹⁹ AECOM. January 2021. Greater Norwich Water Cycle Study. Final Draft.

²⁰ Environment Agency. Updated December 2015. Part 1: Anglian River Basin District. River Basin Management Plan.

²¹ Environment Agency. 2015. River basin management plan for the Anglian River Basin District Habitats Regulations Assessment Updated December 2015. Available at: https://assets.publishing.service.gov.uk/government/uploads/system/uploads/attachment_data/file/496430/RBMP_HRA_Anglian_FINAL_Jan_2016.pdf [Date Accessed: 18/11/22]

²² Place Services. March 2021. Norfolk Green Infrastructure and Recreational Impact Avoidance and Mitigation Strategy. Habitats Regulations Strategy Document.

²³ Greater Norwich Growth Board. May 2020. Greater Norwich Infrastructure Plan. <https://www.greaternorwichgrowth.org.uk/delivery/greater-norwich-infrastructure-plan/> [Date Accessed: 18/11/22]

²⁴ Norfolk County Council. <https://www.norfolk.gov.uk/roads-and-transport/major-projects-and-improvement-plans/norwich/norwich-western-link> [Date Accessed: 18/11/22]

Plans and Policies	Plan Status	Summary of housing/employment	HRA Output and Key Considerations
	submitted, and contractor appointed. Mid-2022 – Pre-planning application public consultation	A1067 to the A47 west of Norwich.	<p>European site alone. It is therefore likely that a PPSE will survive or fail the Integrity Test according to its effects alone. Sufficient information is not available at the time of writing to allow a detailed in-combination assessment with the VCHAP. It is therefore considered reasonable to not consider the effect of this project in combination with the VCHAP.</p> <p>It may be necessary to consider this scheme as part of a future HRA in-combination assessment work, should alone impacts be proven to be unlikely.</p>

Appendix C: Habitats Sites Conservation Objectives

River Wensum SAC¹

Conservation objectives:

Ensure that the integrity of the site is maintained or restored as appropriate, and ensure that the site contributes to achieving the Favourable Conservation Status of its Qualifying Features, by maintaining or restoring:

- The extent and distribution of qualifying natural habitats and habitats of qualifying species;
- The structure and function (including typical species) of qualifying natural habitats;
- The structure and function of the habitats of qualifying species;
- The supporting processes on which qualifying natural habitats and the habitats of qualifying species rely;
- The populations of qualifying species; and
- The distribution of qualifying species within the site.

Qualifying Features:

H3260. Water courses of plain to montane levels with the *Ranunculion fluitantis* and *Callitriche-Batrachion* vegetation; Rivers with floating vegetation often dominated by water-crowfoot

S1016. *Vertigo moulinsiana*; Desmoulin's whorl snail

S1092. *Austropotamobius pallipes*; White-clawed (or Atlantic stream) crayfish

S1096. *Lampetra planeri*; Brook lamprey

S1163. *Cottus gobio*; Bullhead

Threats and Pressures at Habitats site which may be affected by VCHAP^{2,3}:

- Water Pollution;
- Water Abstraction; and
- Impacts on riparian zone habitats.

¹ Natural England (2018) River Wensum SAC Conservation Objectives. Available at:
<http://publications.naturalengland.org.uk/file/4906653837426688> [Date Accessed: 22/11/22]

² Natural England (2014) River Wensum SAC SIP. Available at:
<http://publications.naturalengland.org.uk/file/5795274547003392> [Date Accessed: 22/11/22]

³ Natural England (2019) River Wensum SAC Conservation Objectives Supplementary Advice. Available at:
<http://publications.naturalengland.org.uk/file/6254570196172800> [Date Accessed: 22/11/22]

Norfolk Valley Fens SAC⁴

Conservation objectives:

Ensure that the integrity of the site is maintained or restored as appropriate, and ensure that the site contributes to achieving the Favourable Conservation Status of its Qualifying Features, by maintaining or restoring;

- The extent and distribution of qualifying natural habitats and habitats of qualifying species;
- The structure and function (including typical species) of qualifying natural habitats;
- The structure and function of the habitats of qualifying species;
- The supporting processes on which qualifying natural habitats and the habitats of qualifying species rely;
- The populations of qualifying species; and
- The distribution of qualifying species within the site.

Qualifying Features:

H4010. Northern Atlantic wet heaths with *Erica tetralix*; Wet heathland with cross-leaved heath

H4030. European dry heaths

H6210. Semi-natural dry grasslands and scrubland facies: on calcareous substrates (*Festuco-Brometalia*); Dry grasslands and scrublands on chalk or limestone

H6410. Molinia meadows on calcareous, peaty or clayey-silt-laden soils (*Molinion caeruleae*); Purple moor-grass meadows

H7210. Calcareous fens with *Cladium mariscus* and species of the *Caricion davallianae*; Calcium-rich fen dominated by great fen sedge (saw sedge)*

H7230. Alkaline fens; Calcium-rich springwater-fed fens

H91E0. Alluvial forests with *Alnus glutinosa* and *Fraxinus excelsior* (*Alno-Padion*, *Alnion incanae*, *Salicion albae*); Alder woodland on floodplains*

S1014. *Vertigo angustior*; Narrow-mouthed whorl snail

S1016. *Vertigo moulinsiana*; Desmoulin's whorl snail

* Priority natural habitats or species

Threats and Pressures at Habitats site which may be affected by VCHAP^{5,6}:

- Hydrological Change;
- Water Pollution;
- Water Abstraction; and
- Air Pollution – impact of atmospheric nitrogen deposition.

⁴ Natural England (2019) Norfolk Valley Fens SAC Conservation Objectives. Available at: <http://publications.naturalengland.org.uk/file/4744233475112960> [Date Accessed: 22/11/22]

⁵ Natural England (2014) Norfolk Valley Fens SAC SIP. Available at: <http://publications.naturalengland.org.uk/file/4592297601662976> [Date Accessed: 22/11/22]

⁶ Natural England (2019) Norfolk Valley Fens SAC Conservation Objectives Supplementary Advice. Available at: <http://publications.naturalengland.org.uk/file/5508865827536896> [Date Accessed: 22/11/22]

The Broads SAC⁷

Conservation objectives:

Ensure that the integrity of the site is maintained or restored as appropriate, and ensure that the site contributes to achieving the Favourable Conservation Status of its Qualifying Features, by maintaining or restoring;

- The extent and distribution of qualifying natural habitats and habitats of qualifying species;
- The structure and function (including typical species) of qualifying natural habitats;
- The structure and function of the habitats of qualifying species;
- The supporting processes on which qualifying natural habitats and the habitats of qualifying species rely;
- The populations of qualifying species; and
- The distribution of qualifying species within the site.

Qualifying Features:

H3140. Hard oligo-mesotrophic waters with benthic vegetation of *Chara spp.*; Calcium-rich nutrient-poor lakes, lochs and pools

H3150. Natural eutrophic lakes with *Magnopotamion* or *Hydrocharition*-type vegetation; Naturally nutrient-rich lakes or lochs which are often dominated by pondweed

H6410. *Molinia* meadows on calcareous, peaty or clayey-silt-laden soils (*Molinion caeruleae*); Purple moor-grass meadows

H7140. Transition mires and quaking bogs; Very wet mires often identified by an unstable `quaking` surface

H7210. Calcareous fens with *Cladium mariscus* and species of the *Caricion davallianae*; Calcium-rich fen dominated by great fen sedge (saw sedge)*

H7230. Alkaline fens; Calcium-rich springwater-fed fens

H91E0. Alluvial forests with *Alnus glutinosa* and *Fraxinus excelsior* (*Alno-Padion*, *Alnion incanae*, *Salicion albae*); Alder woodland on floodplains*

S1016. *Vertigo moulinsiana*; Desmoulin`s whorl snail

S1355. *Lutra lutra*; Otter

S1903. *Liparis loeselii*; Fen orchid

S4056. *Anisus vorticulus*; Little whirlpool ram's-horn snail

* Priority natural habitats or species

Threats and Pressures at Habitats site which may be affected by VCHAP^{8,9}:

- Water Pollution;
- Inappropriate Water Levels;
- Hydrological Changes;
- Water Abstraction; and
- Air Pollution.

⁷ Natural England (2018) The Broads SAC Conservation Objectives. Available at: <http://publications.naturalengland.org.uk/file/6427605842788352> [Date Accessed: 22/11/22]

⁸ Natural England (2018) Broadland SIP (covering Broadland SPA and The Broads SAC). Available at: <http://publications.naturalengland.org.uk/file/6218680128241664> [Date Accessed: 22/11/22]

⁹ Natural England (2019) The Broads SAC Conservation Objectives Supplementary Advice. Available at: <http://publications.naturalengland.org.uk/file/6067900213624832> [Date Accessed: 22/11/22]

Broadland SPA¹⁰

Conservation objectives:

Ensure that the integrity of the site is maintained or restored as appropriate, and ensure that the site contributes to achieving the aims of the Wild Birds Directive, by maintaining or restoring;

- The extent and distribution of the habitats of the qualifying features;
- The structure and function of the habitats of the qualifying features;
- The supporting processes on which the habitats of the qualifying features rely;
- The population of each of the qualifying features; and
- The distribution of the qualifying features within the site.

Qualifying features:

A021 *Botaurus stellaris*; Great bittern (Breeding)

A037 *Cygnus columbianus bewickii*; Bewick's swan (Non-breeding)

A038 *Cygnus cygnus*; Whooper swan (Non-breeding)

A050 *Anas penelope*; Eurasian wigeon (Non-breeding)

A051 *Anas strepera*; Gadwall (Non-breeding)

A056 *Anas clypeata*; Northern shoveler (Non-breeding)

A081 *Circus aeruginosus*; Eurasian marsh harrier (Breeding)

A082 *Circus cyaneus*; Hen harrier (Non-breeding)

A151 *Philomachus pugnax*; Ruff (Non-breeding)

Threats and Pressures at Habitats site which may be affected by VCHAP^{11,12}:

- Water Pollution;
- Inappropriate Water Levels;
- Hydrological Changes;
- Water Abstraction;
- Public Access and Disturbance; and
- Air Pollution.

¹⁰ Natural England (2019) Broadland SPA Conservation Objectives. Available at:
<http://publications.naturalengland.org.uk/file/5433101912375296> [Date Accessed: 22/11/22]

¹¹ Natural England (2018) Broadland SIP (covering Broadland SPA and The Broads SAC). Available at:
<http://publications.naturalengland.org.uk/file/6218680128241664> [Date Accessed: 22/11/22]

¹² Natural England (2019) Broadland SPA Conservation Objectives Supplementary Advice. Available at:
<http://publications.naturalengland.org.uk/file/4516754755944448> [Date Accessed: 22/11/22]

Broadland Ramsar¹³

Ramsar sites do not have the Conservation Objectives in the same way as SPAs and SACs. Information regarding the designation of Ramsar sites is contained in INCC Ramsar Information Sheets. Ramsar Criteria are the criteria for identifying Wetlands of International Importance. The relevant criteria and ways in which this site meets the criteria are presented in the table below.

Ramsar Criterion	Justification for the application of each criterion								
2	<p>Ramsar criterion 2 - The site supports a number of rare species and habitats within the biogeographical zone context, including the following Habitats Directive Annex I feature</p> <p>H7210 Calcareous fens with <i>Cladium mariscus</i> and species of the <i>Caricion davallianae</i> Calcium-rich fen dominated by great fen sedge (saw sedge).</p> <p>H7230 Alkaline fens Calcium-rich springwater-fed fens.</p> <p>H91E0 Alluvial forests with <i>Alnus glutinosa</i> and <i>Fraxinus excelsior</i> (<i>Alno-Padion</i>, <i>Alnion incanae</i>, <i>Salicion albae</i>) Alder woodland on floodplains, and the Annex II species</p> <p>S1016 <i>Vertigo moulinsiana</i> Desmoulin`s whorl snail</p> <p>S1355 <i>Lutra lutra</i> Otter</p> <p>S1903 <i>Liparis loeselii</i> Fen orchid.</p> <p>The site supports outstanding assemblages of rare plants and invertebrates including nine British Red Data Book plants and 136 British Red Data Book invertebrates.</p>								
6	<p>Ramsar criterion 6 – species/populations occurring at levels of international importance.</p> <table border="1"> <thead> <tr> <th colspan="2">Qualifying Species/populations (as identified at designation): Species with peak counts in winter:</th> </tr> </thead> <tbody> <tr> <td>Tundra swan , <i>Cygnus columbianus bewickii</i>, NW Europe</td> <td>196 individuals, representing an average of 2.4% of the GB population (5 year peak mean 1998/9- 2002/3)</td> </tr> <tr> <td>Eurasian wigeon , <i>Anas penelope</i>, NW Europe</td> <td>6769 individuals, representing an average of 1.6% of the GB population (5 year peak mean 1998/9-2002/3)</td> </tr> <tr> <td>Gadwall , <i>Anas strepera strepera</i>, NW Europe</td> <td>545 individuals, representing an average of 3.1% of the GB population (5 year peak mean 1998/9- 2002/3)</td> </tr> </tbody> </table>	Qualifying Species/populations (as identified at designation): Species with peak counts in winter:		Tundra swan , <i>Cygnus columbianus bewickii</i> , NW Europe	196 individuals, representing an average of 2.4% of the GB population (5 year peak mean 1998/9- 2002/3)	Eurasian wigeon , <i>Anas penelope</i> , NW Europe	6769 individuals, representing an average of 1.6% of the GB population (5 year peak mean 1998/9-2002/3)	Gadwall , <i>Anas strepera strepera</i> , NW Europe	545 individuals, representing an average of 3.1% of the GB population (5 year peak mean 1998/9- 2002/3)
Qualifying Species/populations (as identified at designation): Species with peak counts in winter:									
Tundra swan , <i>Cygnus columbianus bewickii</i> , NW Europe	196 individuals, representing an average of 2.4% of the GB population (5 year peak mean 1998/9- 2002/3)								
Eurasian wigeon , <i>Anas penelope</i> , NW Europe	6769 individuals, representing an average of 1.6% of the GB population (5 year peak mean 1998/9-2002/3)								
Gadwall , <i>Anas strepera strepera</i> , NW Europe	545 individuals, representing an average of 3.1% of the GB population (5 year peak mean 1998/9- 2002/3)								

¹³ JNCC. 2008. Information Sheet on Ramsar Wetlands. Broadland Ramsar <https://jncc.gov.uk/jncc-assets/RIS/UK11010.pdf> [Date Accessed: 22/11/22].

App C

	Northern shoveler , <i>Anas clypeata</i> , NW & C Europe	247 individuals, representing an average of 1.6% of the GB population (5 year peak mean 1998/9- 2002/3)
	Species/populations identified subsequent to designation for possible future consideration under criterion 6. Species with peak counts in winter:	
	Pink-footed goose , <i>Anser brachyrhynchus</i> , Greenland, Iceland/UK	4263 individuals, representing an average of 1.7% of the population (5 year peak mean 1998/9-2002/3)
	Greylag goose , <i>Anser anser anser</i> , Iceland/UK, Ireland	1007 individuals, representing an average of 1.1% of the population (Source period not collated)
	Threats and Pressures at Habitats site which may be affected by VCHAP: None identified in Ramsar Information Sheet.	

Breydon Water SPA¹⁴

Conservation objectives:

Ensure that the integrity of the site is maintained or restored as appropriate, and ensure that the site contributes to achieving the aims of the Wild Birds Directive, by maintaining or restoring;

- The extent and distribution of the habitats of the qualifying features;
- The structure and function of the habitats of the qualifying features;
- The supporting processes on which the habitats of the qualifying features rely;
- The population of each of the qualifying features; and
- The distribution of the qualifying features within the site.

Qualifying Features:

A037 *Cygnus columbianus bewickii*; Bewick’s swan (Non-breeding)

A132 *Recurvirostra avosetta*; Pied avocet (Non-breeding)

A140 *Pluvialis apricaria*; European golden plover (Non-breeding)

A142 *Vanellus vanellus*; Northern lapwing (Non-breeding)

A151 *Philomachus pugnax*; Ruff (Non-breeding)

A193 *Sterna hirundo*; Common tern (Breeding)

A Waterbird assemblage

Threats and Pressures at Habitats site which may be affected by VCHAP¹⁵:

- Public Access and Disturbance; and
- Hydrology Changes.

¹⁴ Natural England (2019) Breydon Water SPA Conservation Objectives. Available at: <http://publications.naturalengland.org.uk/file/4822248376762368> [Date Accessed: 22/11/22]

¹⁵ Natural England (2018) Breydon Water SPA SIP. Available at: <http://publications.naturalengland.org.uk/file/5893824219447296> [Date Accessed: 22/11/22]

Breydon Water Ramsar¹⁶

Ramsar sites do not have the Conservation Objectives in the same way as SPAs and SACs. Information regarding the designation of Ramsar sites is contained in INCC Ramsar Information Sheets. Ramsar Criteria are the criteria for identifying Wetlands of International Importance. The relevant criteria and ways in which this site meets the criteria are presented in the table below.

Ramsar Criterion	Justification for the application of each criterion																
5	<p>Ramsar criterion 5 - Assemblages of international importance</p> <p>Species with peak counts in winter: 68175 waterfowl (5 year peak mean 1998/99-2002/2003)</p>																
6	<p>Ramsar criterion 6 – species/populations occurring at levels of international importance.</p> <table border="1"> <tr> <td colspan="2">Qualifying Species/populations (as identified at designation): Species with peak counts in winter:</td> </tr> <tr> <td>Tundra swan , <i>Cygnus columbianus bewickii</i>, NW Europe</td> <td>171 individuals, representing an average of 2.1% of the GB population (5 year peak mean 1998/9- 2002/3)</td> </tr> <tr> <td>Northern lapwing , <i>Vanellus vanellus</i>, Europe - breeding</td> <td>20142 individuals, representing an average of 1.3% of the GB population (5 year peak mean 1998/9-2002/3)</td> </tr> </table> <table border="1"> <tr> <td colspan="2">Species/populations identified subsequent to designation for possible future consideration under criterion 6. Species with peak counts in winter:</td> </tr> <tr> <td>Pink-footed goose , <i>Anser brachyrhynchus</i>, Greenland, Iceland/UK</td> <td>5816 individuals, representing an average of 2.4% of the population (5 year peak mean 1998/9-2002/3)</td> </tr> <tr> <td>Eurasian wigeon , <i>Anas penelope</i>, NW Europe</td> <td>15624 individuals, representing an average of 1% of the population (5 year peak mean 1998/9- 2002/3)</td> </tr> <tr> <td>Northern shoveler , <i>Anas clypeata</i>, NW & C Europe</td> <td>478 individuals, representing an average of 1.1% of the population (5 year peak mean 1998/9- 2002/3)</td> </tr> <tr> <td>European golden plover <i>Pluvialis apricaria apricaria</i>, <i>P. a. altifrons</i> Iceland & Faroes/E Atlantic</td> <td>10656 individuals, representing an average of 1.1% of the population (5 year peak mean 1998/9-2002/3)</td> </tr> </table>	Qualifying Species/populations (as identified at designation): Species with peak counts in winter:		Tundra swan , <i>Cygnus columbianus bewickii</i> , NW Europe	171 individuals, representing an average of 2.1% of the GB population (5 year peak mean 1998/9- 2002/3)	Northern lapwing , <i>Vanellus vanellus</i> , Europe - breeding	20142 individuals, representing an average of 1.3% of the GB population (5 year peak mean 1998/9-2002/3)	Species/populations identified subsequent to designation for possible future consideration under criterion 6. Species with peak counts in winter:		Pink-footed goose , <i>Anser brachyrhynchus</i> , Greenland, Iceland/UK	5816 individuals, representing an average of 2.4% of the population (5 year peak mean 1998/9-2002/3)	Eurasian wigeon , <i>Anas penelope</i> , NW Europe	15624 individuals, representing an average of 1% of the population (5 year peak mean 1998/9- 2002/3)	Northern shoveler , <i>Anas clypeata</i> , NW & C Europe	478 individuals, representing an average of 1.1% of the population (5 year peak mean 1998/9- 2002/3)	European golden plover <i>Pluvialis apricaria apricaria</i> , <i>P. a. altifrons</i> Iceland & Faroes/E Atlantic	10656 individuals, representing an average of 1.1% of the population (5 year peak mean 1998/9-2002/3)
Qualifying Species/populations (as identified at designation): Species with peak counts in winter:																	
Tundra swan , <i>Cygnus columbianus bewickii</i> , NW Europe	171 individuals, representing an average of 2.1% of the GB population (5 year peak mean 1998/9- 2002/3)																
Northern lapwing , <i>Vanellus vanellus</i> , Europe - breeding	20142 individuals, representing an average of 1.3% of the GB population (5 year peak mean 1998/9-2002/3)																
Species/populations identified subsequent to designation for possible future consideration under criterion 6. Species with peak counts in winter:																	
Pink-footed goose , <i>Anser brachyrhynchus</i> , Greenland, Iceland/UK	5816 individuals, representing an average of 2.4% of the population (5 year peak mean 1998/9-2002/3)																
Eurasian wigeon , <i>Anas penelope</i> , NW Europe	15624 individuals, representing an average of 1% of the population (5 year peak mean 1998/9- 2002/3)																
Northern shoveler , <i>Anas clypeata</i> , NW & C Europe	478 individuals, representing an average of 1.1% of the population (5 year peak mean 1998/9- 2002/3)																
European golden plover <i>Pluvialis apricaria apricaria</i> , <i>P. a. altifrons</i> Iceland & Faroes/E Atlantic	10656 individuals, representing an average of 1.1% of the population (5 year peak mean 1998/9-2002/3)																

¹⁶ JNCC. 2008. Information Sheet on Ramsar Wetlands. Breydon Water Ramsar <https://jncc.gov.uk/jncc-assets/RIS/UK11008.pdf> [Date Accessed: 22/11/22].

App C

	<p>Black-tailed godwit , <i>Limosa limosa islandica</i>, Iceland/W Europe</p>	<p>1100 individuals, representing an average of 3.1% of the population (5 year peak mean 1998/9-2002/3)</p>	
<p>Threats and Pressures at Habitats site which may be affected by VCHAP: None identified in Ramsar Information Sheet.</p>			

Great Yarmouth North Deans SPA¹⁷

Conservation objectives:

Ensure that the integrity of the site is maintained or restored as appropriate, and ensure that the site contributes to achieving the aims of the Wild Birds Directive, by maintaining or restoring;

- The extent and distribution of the habitats of the qualifying features;
- The structure and function of the habitats of the qualifying features;
- The supporting processes on which the habitats of the qualifying features rely;
- The population of each of the qualifying features; and
- The distribution of the qualifying features within the site.

Qualifying Features:

A195 *Sterna albifrons*; Little tern (Breeding)

Threats and Pressures at Habitats site which may be affected by VCHAP^{18,19}:

- Public Access and Disturbance;
- Hydrological Changes;
- Air Pollution.

Winterton-Horsey Dunes SAC²⁰

Conservation objectives:

Ensure that the integrity of the site is maintained or restored as appropriate, and ensure that the site contributes to achieving the Favourable Conservation Status of its Qualifying Features, by maintaining or restoring;

- The extent and distribution of the qualifying natural habitats

¹⁷ Natural England (2019) Great Yarmouth North Denes SPA Conservation Objectives. Available at: <http://publications.naturalengland.org.uk/file/6450939770961920> [Date Accessed: 22/11/22]

¹⁸ Natural England (2018) Great Yarmouth Winterton Horsey SIP (to cover Great Yarmouth North Denes SPA and Winterton-Horsey Dunes SAC). Available at: <http://publications.naturalengland.org.uk/file/6277135286665216> [Date Accessed: 22/11/22]

¹⁹ Natural England (2012) Great Yarmouth and North Denes SPA Regulation 33 Advice. Available at: <http://publications.naturalengland.org.uk/file/3957913> [Date Accessed: 22/11/22]

²⁰ Natural England (2018) Winterton-Horsey Dunes SAC Conservation Objectives. Available at: <http://publications.naturalengland.org.uk/file/6564347065401344> [Date Accessed: 21/11/22]

- The structure and function (including typical species) of the qualifying natural habitats; and
- The supporting processes on which the qualifying natural habitats rely

Qualifying Features:

H2110. Embryonic shifting dunes

H2120. Shifting dunes along the shoreline with *Ammophila arenaria* ("white dunes"); Shifting dunes with marram

H2150. Atlantic decalcified fixed dunes (*Calluno-Ulicetea*)*

H2190. Humid dune slacks

*Priority Species.

Threats and Pressures at Habitats site which may be affected by VCHAP^{21,22}:

- Public Access and Disturbance;
- Hydrological Changes; and
- Air Pollution.

Paston Great Barn SAC²³

Conservation objectives:

Ensure that the integrity of the site is maintained or restored as appropriate, and ensure that the site contributes to achieving the Favourable Conservation Status of its Qualifying Features, by maintaining or restoring;

- The extent and distribution of the habitats of qualifying species;
- The structure and function of the habitats of qualifying species;
- The supporting processes on which the habitats of qualifying species rely;
- The populations of qualifying species; and
- The distribution of qualifying species within the site.

Qualifying Features:

S1308. *Barbastella barbastellus*; Barbastelle bat

Threats and Pressures at Habitats site which may be affected by VCHAP^{24,25}:

- Offsite habitat availability / management (loss and changes to hydrological conditions supporting foraging habitat);
- Public access and disturbance (unauthorised access);
- Air Quality (impacts upon broadleaved woodland habitat).

²¹ Natural England (2018) Great Yarmouth Winterton Horsey SIP (to cover Great Yarmouth North Denes SPA and Winterton-Horsey Dunes SAC). Available at:

<http://publications.naturalengland.org.uk/file/6218680128241664> [Date Accessed: 22/11/22]

²² Natural England (2019) Winterton-Horsey Dunes SAC Conservation Objectives Supplementary Advice. Available at:

<http://publications.naturalengland.org.uk/file/5063465840672768> [Date Accessed: 22/11/22]

²³ Natural England (2019) Paston Great Barn SAC Conservation Objectives. Available at:

<http://publications.naturalengland.org.uk/file/5114399593594880> [Date Accessed: 22/11/22]

²⁴ Natural England (2015) Paston Great Barn SAC SIP. Available at:

<http://publications.naturalengland.org.uk/file/5348069707087872> [Date Accessed: 22/11/22]

²⁵ Natural England (2019) Paston Great Barn SAC Conservation Objectives Supplementary Advice. Available at:

<http://publications.naturalengland.org.uk/file/5001414501990400> [Date Accessed: 22/11/22]

Overstrand Cliffs SAC²⁶

Conservation objectives:

Ensure that the integrity of the site is maintained or restored as appropriate, and ensure that the site contributes to achieving the Favourable Conservation Status of its Qualifying Features, by maintaining or restoring;

- The extent and distribution of the qualifying natural habitats;
- The structure and function (including typical species) of the qualifying natural habitats; and
- The supporting processes on which the qualifying natural habitats rely.

Qualifying Features:

H1230. Vegetated sea cliffs of the Atlantic and Baltic coasts

Threats and Pressures at Habitats site which may be affected by VCHAP^{27,28}:

- Water quality; and
- Air Quality.

Waveney & Little Ouse Valley Fens SAC²⁹

Conservation objectives:

Ensure that the integrity of the site is maintained or restored as appropriate, and ensure that the site contributes to achieving the Favourable Conservation Status of its Qualifying Features, by maintaining or restoring;

- The extent and distribution of qualifying natural habitats and habitats of qualifying species;
- The structure and function (including typical species) of qualifying natural habitats;
- The structure and function of the habitats of qualifying species;
- The supporting processes on which qualifying natural habitats and the habitats of qualifying species rely;
- The populations of qualifying species; and
- The distribution of qualifying species within the site.

Qualifying Features:

H6410. *Molinia* meadows on calcareous, peaty or clayey-silt-laden soils (*Molinion caeruleae*); Purple moor-grass meadows

H7210. Calcareous fens with *Cladium mariscus* and species of the *Caricion davallianae*; Calcium-rich fen dominated by great fen sedge (saw sedge)*

S1016. *Vertigo moulinsiana*; Desmoulin's whorl snail

* Priority natural habitats or species

²⁶ Natural England (2018) Overstrand Cliffs SAC Conservation Objectives. Available at: <http://publications.naturalengland.org.uk/file/6578860724584448> [Date Accessed: 22/11/22]

²⁷ Natural England (2014) Overstrand Cliffs SAC SIP. Available at: <http://publications.naturalengland.org.uk/file/6475449683148800> [Date Accessed: 22/11/22]

²⁸ Natural England (2015) Overstrand Cliffs SAC Conservation Objectives Supplementary Advice. Available at: <http://publications.naturalengland.org.uk/file/5574891690524672> [Date Accessed: 22/11/22]

²⁹ Natural England (2018) Waveney & Little Ouse Valley Fens SAC Conservation Objectives. Available at: <http://publications.naturalengland.org.uk/file/5174901589934080> [Date Accessed: 22/11/22]

Threats and Pressures at Habitats site which may be affected by VCHAP^{30,31}:

- Water Pollution;
- Water Levels' and
- Air pollution.

Redgrave and South Lopham Fens Ramsar³²

Ramsar sites do not have the Conservation Objectives in the same way as SPAs and SACs. Information regarding the designation of Ramsar sites is contained in INCC Ramsar Information Sheets. Ramsar Criteria are the criteria for identifying Wetlands of International Importance. The relevant criteria and ways in which this site meets the criteria are presented in the table below.

Ramsar Criterion	Justification for the application of each criterion
2	The site supports many rare and scarce invertebrates, including a population of the fen raft spider <i>Dolomedes plantarius</i> .
3	The site supports many rare and scarce invertebrates, including a population of the fen raft spider <i>Dolomedes plantarius</i> . The diversity of the site is due to the lateral and longitudinal zonation of the vegetation types characteristic of valley mires.

Threats and Pressures at Habitats site which may be affected by VCHAP:

- Water quality.

³⁰ Natural England (2015) Waveney & Little Ouse Valley Fens SAC SIP. Available at: <http://publications.naturalengland.org.uk/file/5005196964921344> [Date Accessed: 22/11/22]

³¹ Natural England (2019) Waveney & Little Ouse Valley Fens SAC Conservation Objectives Supplementary Advice. Available at: <http://publications.naturalengland.org.uk/file/6068391618281472> [Date Accessed: 22/11/22]

³² JNCC. 2008. Information Sheet on Ramsar Wetlands. Redgrave and South Lopham Fens Ramsar <https://jncc.gov.uk/jncc-assets/RIS/UK11056.pdf> [Date Accessed: 22/11/22].

Breckland SAC³³

Conservation objectives:

Ensure that the integrity of the site is maintained or restored as appropriate, and ensure that the site contributes to achieving the Favourable Conservation Status of its Qualifying Features, by maintaining or restoring;

- The extent and distribution of qualifying natural habitats and habitats of qualifying species;
- The structure and function (including typical species) of qualifying natural habitats;
- The structure and function of the habitats of qualifying species;
- The supporting processes on which qualifying natural habitats and the habitats of qualifying species rely;
- The populations of qualifying species; and
- The distribution of qualifying species within the site.

Qualifying Features:

H2330. Inland dunes with open *Corynephorus* and *Agrostis* grasslands; Open grassland with grey-hair grass and common bent grass of inland dunes

H3150. Natural eutrophic lakes with Magnopotamion or Hydrocharition-type vegetation; Naturally nutrient-rich lakes or lochs which are often dominated by pondweed

H4030. European dry heaths

H6210. Semi-natural dry grasslands and scrubland facies: on calcareous substrates (*Festuco-Brometalia*); Dry grasslands and scrublands on chalk or limestone

H91E0. Alluvial forests with *Alnus glutinosa* and *Fraxinus excelsior* (*Alno-Padion*, *Alnion incanae*, *Salicion albae*); Alder woodland on floodplains*

S1166. *Triturus cristatus*; Great crested newt

* Priority natural habitats or species

Threats and Pressures at Habitats site which may be affected by VCHAP^{34,35}:

- Water pollution;
- Planning permission general (housing noted);
- Air pollution;
- Public access and disturbance; and
- Habitat fragmentation.

Breckland SPA³⁶

Conservation objectives:

Ensure that the integrity of the site is maintained or restored as appropriate, and ensure that the site contributes to achieving the aims of the Wild Birds Directive, by maintaining or restoring;

- The extent and distribution of the habitats of the qualifying features;
- The structure and function of the habitats of the qualifying features;

³³ Natural England (2018) Breckland SAC Conservation Objectives. Available at: <http://publications.naturalengland.org.uk/file/6441039158312960> [Date Accessed: 22/11/22]

³⁴ Natural England (2015) Breckland SIP (Covering Breckland SAC and Breckland SPA). Available at: <http://publications.naturalengland.org.uk/file/5005196964921344> [Date Accessed: 22/11/22]

³⁵ Natural England (2019) Breckland SAC. Conservation Objectives Supplementary Advice. Available at: <http://publications.naturalengland.org.uk/file/6754976231849984> [Date Accessed: 22/11/22]

³⁶ Natural England (2019) Breckland SPA Conservation Objectives. Available at: <http://publications.naturalengland.org.uk/file/4973014479536128> [Date Accessed: 22/11/22]

- The supporting processes on which the habitats of the qualifying features rely;
- The population of each of the qualifying features; and
- The distribution of the qualifying features within the site.

Qualifying Features:

A133 *Burhinus oedichnemus*; Stone-curlew (Breeding)

A224 *Caprimulgus europaeus*; European nightjar (Breeding)

A246 *Lullula arborea*; Woodlark (Breeding)

Threats and Pressures at Habitats site which may be affected by VCHAP^{37,38}:

- Water pollution;
- Planning permission general (housing noted);
- Air pollution;
- Public access and disturbance; and
- Habitat fragmentation.

Benacre to Easton Bavents Lagoons SAC³⁹

Conservation objectives:

Ensure that the integrity of the site is maintained or restored as appropriate, and ensure that the site contributes to achieving the Favourable Conservation Status of its Qualifying Features, by maintaining or restoring;

- The extent and distribution of qualifying natural habitats;
- The structure and function (including typical species) of qualifying natural habitats; and
- The supporting processes on which qualifying natural habitats rely

Qualifying Features:

H1150. Coastal lagoons*

* Priority natural habitats or species

Threats and Pressures at Habitats site which may be affected by VCHAP^{40,41}:

- Public access and disturbance;
- Air quality; and
- Water pollution.

³⁷ Natural England (2015) Breckland SIP (Covering Breckland SAC and Breckland SPA). Available at: <http://publications.naturalengland.org.uk/file/5005196964921344> [Date Accessed: 22/11/22]

³⁸ Natural England (2019) Breckland SPA. Conservation Objectives Supplementary Advice. Available at: <http://publications.naturalengland.org.uk/file/5048975426322432> [Date Accessed: 22/11/22]

³⁹ Natural England (2019) Benacre to Easton Bavents Lagoons SAC Conservation Objectives. Available at: <http://publications.naturalengland.org.uk/file/6005842830950400> [Date Accessed: 22/11/22]

⁴⁰ Natural England (2015) Benacre to Easton Bavents SIP (Covering Benacre to Easton Bavents Lagoons SAC and Benacre to Easton Bavents SPA). Available at: <http://publications.naturalengland.org.uk/file/5868757182316544> [Date Accessed: 22/11/22]

⁴¹ Natural England (2019) Benacre to Easton Bavents Lagoons SAC. Conservation Objectives Supplementary Advice. Available at: <http://publications.naturalengland.org.uk/file/5503127986110464> [Date Accessed: 22/11/22]

Benacre to Easton Bavents Lagoons SPA⁴²

Conservation objectives:

Ensure that the integrity of the site is maintained or restored as appropriate, and ensure that the site contributes to achieving the aims of the Wild Birds Directive, by maintaining or restoring;

- The extent and distribution of the habitats of the qualifying features;
- The structure and function of the habitats of the qualifying features;
- The supporting processes on which the habitats of the qualifying features rely;
- The population of each of the qualifying features; and
- The distribution of the qualifying features within the site.

Qualifying Features:

A021 *Botaurus stellaris*; Great bittern (Breeding)

A081 *Circus aeruginosus*; Eurasian marsh harrier (Breeding)

A195 *Sterna albifrons*; Little tern (Breeding)

Threats and Pressures at Habitats site which may be affected by VCHAP^{43,44}:

- Public access and disturbance;
- Air quality; and
- Water pollution.

Dew's Ponds SAC⁴⁵

Conservation objectives:

Ensure that the integrity of the site is maintained or restored as appropriate, and ensure that the site contributes to achieving the Favourable Conservation Status of its Qualifying Features, by maintaining or restoring;

- The extent and distribution of the habitats of qualifying species;
- The structure and function of the habitats of qualifying species;
- The supporting processes on which the habitats of qualifying species rely;
- The populations of qualifying species; and
- The distribution of qualifying species within the site.

Qualifying Features:

S1166. *Triturus cristatus*; Great crested newt

⁴² Natural England (2019) Benacre to Easton Bavents Lagoons SPA Conservation Objectives. Available at: <http://publications.naturalengland.org.uk/file/5222146070806528> [Date Accessed: 22/11/22]

⁴³ Natural England (2015) Benacre to Easton Bavents SIP (Covering Benacre to Easton Bavents Lagoons SAC and Benacre to Easton Bavents SPA). Available at: <http://publications.naturalengland.org.uk/file/5868757182316544> [Date Accessed: 22/11/22]

⁴⁴ Natural England (2019) Benacre to Easton Bavents Lagoons SPA. Conservation Objectives Supplementary Advice. Available at: <http://publications.naturalengland.org.uk/file/5503127986110464> [Date Accessed: 22/11/22]

⁴⁵ Natural England (2018) Dew's Point SAC Conservation Objectives. Available at: <http://publications.naturalengland.org.uk/file/5809266204344320> [Date Accessed: 22/11/22]

Threats and Pressures at Habitats site which may be affected by VCHAP^{46,47}:

- Water quality; and
- Air quality.

The Wash and North Norfolk Coast SAC⁴⁸

Conservation objectives:

Ensure that the integrity of the site is maintained or restored as appropriate, and ensure that the site contributes to achieving the Favourable Conservation Status of its Qualifying Features, by maintaining or restoring;

- The extent and distribution of qualifying natural habitats and habitats of qualifying species;
- The structure and function (including typical species) of qualifying natural habitats;
- The structure and function of the habitats of qualifying species;
- The supporting processes on which qualifying natural habitats and the habitats of qualifying species rely;
- The populations of qualifying species; and
- The distribution of qualifying species within the site.

Qualifying Features:

H1110. Sandbanks which are slightly covered by sea water all the time; Subtidal sandbanks
H1140. Mudflats and sandflats not covered by seawater at low tide; Intertidal mudflats and sandflats

H1150. Coastal lagoons*

H1160. Large shallow inlets and bays

H1170. Reefs

H1310. Salicornia and other annuals colonising mud and sand; Glasswort and other annuals colonising mud and sand

H1330. Atlantic salt meadows (*Glauco-Puccinellietalia maritimae*)

H1420. Mediterranean and thermo-Atlantic halophilous scrubs (*Sarcocornetea fruticosi*);

Mediterranean saltmarsh scrub

S1355. *Lutra lutra*; Otter

S1365. *Phoca vitulina*; Common seal

* Priority natural habitats or species

Threats and Pressures at Habitats site which may be affected by VCHAP⁴⁹:

- Water levels;
- Public access and disturbance; and
- Air pollution.

⁴⁶ Natural England (2014) Dew's Point SAC SIP. Available at:

<http://publications.naturalengland.org.uk/file/5689361702060032> [Date Accessed: 22/11/22]

⁴⁷ Natural England (2015) Dew's Point SAC. Conservation Objectives Supplementary Advice. Available at:

<http://publications.naturalengland.org.uk/file/6663816760786944> [Date Accessed: 22/11/22]

⁴⁸ Natural England (2018) The Wash and North Norfolk Coast SAC Conservation Objectives. Available at:

<http://publications.naturalengland.org.uk/file/5213489320951808> [Date Accessed: 22/11/22]

⁴⁹ Natural England (2014) The Wash and North Norfolk Coast SIP (to cover Gibraltar Point SPA, N Norfolk Coast SPA, North Norfolk Coast SAC, The Wash and North Norfolk Coast SAC and The Wash SPA). Available at:

<http://publications.naturalengland.org.uk/file/6240487188987904> [Date Accessed: 22/11/22]

The Wash SPA⁵⁰

Conservation objectives:

Ensure that the integrity of the site is maintained or restored as appropriate, and ensure that the site contributes to achieving the aims of the Wild Birds Directive, by maintaining or restoring;

- The extent and distribution of the habitats of the qualifying features;
- The structure and function of the habitats of the qualifying features;
- The supporting processes on which the habitats of the qualifying features rely;
- The population of each of the qualifying features; and
- The distribution of the qualifying features within the site.

Qualifying Features:

A037 *Cygnus columbianus bewickii*; Bewick's swan (Non-breeding)
 A040 *Anser brachyrhynchus*; Pink-footed goose (Non-breeding)
 A046a *Branta bernicla bernicla*; Dark-bellied brent goose (Non-breeding)
 A048 *Tadorna tadorna*; Common shelduck (Non-breeding)
 A050 *Anas penelope*; Eurasian wigeon (Non-breeding)
 A051 *Anas strepera*; Gadwall (Non-breeding)
 A054 *Anas acuta*; Northern pintail (Non-breeding)
 A065 *Melanitta nigra*; Black (common) scoter (Non-breeding)
 A067 *Bucephala clangula*; Common goldeneye (Non-breeding)
 A130 *Haematopus ostralegus*; Eurasian oystercatcher (Non-breeding)
 A141 *Pluvialis squatarola*; Grey plover (Non-breeding)
 A143 *Calidris canutus*; Red knot (Non-breeding)
 A144 *Calidris alba*; Sanderling (Non-breeding)
 A149 *Calidris alpina alpina*; Dunlin (Non-breeding)
 A156 *Limosa limosa islandica*; Black-tailed godwit (Non-breeding)
 A157 *Limosa lapponica*; Bar-tailed godwit (Non-breeding)
 A160 *Numenius arquata*; Eurasian curlew (Non-breeding)
 A162 *Tringa totanus*; Common redshank (Non-breeding)
 A169 *Arenaria interpres*; Ruddy turnstone (Non-breeding)
 A193 *Sterna hirundo*; Common tern (Breeding)
 A195 *Sterna albifrons*; Little tern (Breeding)
 Waterbird assemblage

Threats and Pressures at Habitats site which may be affected by VCHAP⁵¹:

- Water levels;
- Public access and disturbance; and
- Air pollution.

The Wash Ramsar⁵²

Ramsar sites do not have the Conservation Objectives in the same way as SPAs and SACs. Information regarding the designation of Ramsar sites is contained in INCC Ramsar Information

⁵⁰ Natural England (2019) The Wash SPA Conservation Objectives. Available at: <http://publications.naturalengland.org.uk/file/4748062010638336> [Date Accessed: 22/11/22]

⁵¹ Natural England (2014) The Wash and North Norfolk Coast SIP (to cover Gibraltar Point SPA, N Norfolk Coast SPA, North Norfolk Coast SAC, The Wash and North Norfolk Coast SAC and The Wash SPA). Available at: <http://publications.naturalengland.org.uk/file/6240487188987904> [Date Accessed: 22/11/22]

⁵² JNCC. 2008. The Wash Information Sheet on Ramsar Wetlands. The Wash Ramsar <https://jncc.gov.uk/jncc-assets/RIS/UK11072.pdf> [Date Accessed: 22/11/22].

Sheets. Ramsar Criteria are the criteria for identifying Wetlands of International Importance. The relevant criteria and ways in which this site meets the criteria are presented in the table below.

Ramsar Criterion	Justification for the application of each criterion												
1	<p>Ramsar criterion 1</p> <p>The Wash is a large shallow bay comprising very extensive saltmarshes, major intertidal banks of sand and mud, shallow water and deep channels.</p>												
3	<p>Ramsar criterion 5</p> <p>Qualifies because of the inter-relationship between its various components including saltmarshes, intertidal sand and mud flats and the estuarine waters. The saltmarshes and the plankton in the estuarine water provide a primary source of organic material which, together with other organic matter, forms the basis for the high productivity of the estuary.</p>												
5	<p>Ramsar criterion 5</p> <p>Assemblages of international importance: Species with peak counts in winter:</p> <p>292541 waterfowl (5 year peak mean 1998/99-2002/2003)</p>												
6	<p>Ramsar criterion 6 – species/populations occurring at levels of international importance.</p> <p>Qualifying Species/populations (as identified at designation):</p> <table border="1" data-bbox="384 1178 1273 2007"> <thead> <tr> <th colspan="2" data-bbox="384 1178 1273 1265">Species with peak counts in spring/autumn</th> </tr> </thead> <tbody> <tr> <td data-bbox="384 1265 743 1469">Eurasian oystercatcher , <i>Haematopus ostralegus ostralegus</i>, Europe & NW Africa - wintering</td> <td data-bbox="743 1265 1273 1469">15616 individuals, representing an average of 1.5% of the population (5 year peak mean 1998/9-2002/3)</td> </tr> <tr> <td data-bbox="384 1469 743 1632">Grey plover , <i>Pluvialis squatarola</i>, E Atlantic/W Africa - wintering</td> <td data-bbox="743 1469 1273 1632">13129 individuals, representing an average of 5.3% of the population (5 year peak mean 1998/9-2002/3 - spring peak)</td> </tr> <tr> <td data-bbox="384 1632 743 1796">Red knot , <i>Calidris canutus islandica</i>, W & Southern Africa (wintering)</td> <td data-bbox="743 1632 1273 1796">68987 individuals, representing an average of 15.3% of the population (5 year peak mean 1998/9-2002/3)</td> </tr> <tr> <td data-bbox="384 1796 743 1890">Sanderling , <i>Calidris alba</i>, Eastern Atlantic</td> <td data-bbox="743 1796 1273 1890">3505 individuals, representing an average of 2.8% of the population (5 year peak mean 1998/9-2002/3)</td> </tr> <tr> <td data-bbox="384 1890 743 2007">Eurasian curlew , <i>Numenius arquata</i></td> <td data-bbox="743 1890 1273 2007">9438 individuals, representing an average of 2.2% of the population (5 year peak mean 1998/9-2002/3)</td> </tr> </tbody> </table>	Species with peak counts in spring/autumn		Eurasian oystercatcher , <i>Haematopus ostralegus ostralegus</i> , Europe & NW Africa - wintering	15616 individuals, representing an average of 1.5% of the population (5 year peak mean 1998/9-2002/3)	Grey plover , <i>Pluvialis squatarola</i> , E Atlantic/W Africa - wintering	13129 individuals, representing an average of 5.3% of the population (5 year peak mean 1998/9-2002/3 - spring peak)	Red knot , <i>Calidris canutus islandica</i> , W & Southern Africa (wintering)	68987 individuals, representing an average of 15.3% of the population (5 year peak mean 1998/9-2002/3)	Sanderling , <i>Calidris alba</i> , Eastern Atlantic	3505 individuals, representing an average of 2.8% of the population (5 year peak mean 1998/9-2002/3)	Eurasian curlew , <i>Numenius arquata</i>	9438 individuals, representing an average of 2.2% of the population (5 year peak mean 1998/9-2002/3)
Species with peak counts in spring/autumn													
Eurasian oystercatcher , <i>Haematopus ostralegus ostralegus</i> , Europe & NW Africa - wintering	15616 individuals, representing an average of 1.5% of the population (5 year peak mean 1998/9-2002/3)												
Grey plover , <i>Pluvialis squatarola</i> , E Atlantic/W Africa - wintering	13129 individuals, representing an average of 5.3% of the population (5 year peak mean 1998/9-2002/3 - spring peak)												
Red knot , <i>Calidris canutus islandica</i> , W & Southern Africa (wintering)	68987 individuals, representing an average of 15.3% of the population (5 year peak mean 1998/9-2002/3)												
Sanderling , <i>Calidris alba</i> , Eastern Atlantic	3505 individuals, representing an average of 2.8% of the population (5 year peak mean 1998/9-2002/3)												
Eurasian curlew , <i>Numenius arquata</i>	9438 individuals, representing an average of 2.2% of the population (5 year peak mean 1998/9-2002/3)												

App C

	<i>arquata, N. a. arquata</i> Europe (breeding)	
	Common redshank , <i>Tringa totanus totanus,</i>	6373 individuals, representing an average of 2.5% of the population (5 year peak mean 1998/9-2002/3)
	Ruddy turnstone , <i>Arenaria interpres interpres,</i> NE Canada, Greenland/W Europe & NW Africa	888 individuals, representing an average of 1.7% of the GB population (5 year peak mean 1998/9- 2002/3)
	Species with peak counts in spring/autumn:	
	Pink-footed goose , <i>Anser brachyrhynchus,</i> Greenland, Iceland/UK	29099 individuals, representing an average of 12.1% of the population (5 year peak mean 1998/9-2002/3)
	Dark-bellied brent goose, <i>Branta bernicla bernicla,</i>	20861 individuals, representing an average of 9.7% of the population (5 year peak mean 1998/9-2002/3)
	Common shelduck , <i>Tadorna tadorna,</i> NW Europe	9746 individuals, representing an average of 3.2% of the population (5 year peak mean 1998/9-2002/3)
	Northern pintail , <i>Anas acuta,</i> NW Europe	431 individuals, representing an average of 1.5% of the GB population (5 year peak mean 1998/9- 2002/3)
	Dunlin , <i>Calidris alpina alpina,</i> W Siberia/W Europe	36600 individuals, representing an average of 2.7% of the population (5 year peak mean 1998/9-2002/3)
	Bar-tailed godwit , <i>Limosa lapponica lapponica,</i> W Palearctic	16546 individuals, representing an average of 13.7% of the population (5 year peak mean 1998/9-2002/3)
	Species/populations identified subsequent to designation for possible future consideration under criterion 6.	
	Species with peak counts in spring/autumn:	
	Ringed plover , <i>Charadrius hiaticula,</i> Europe/Northwest Africa	1500 individuals, representing an average of 2% of the population (5 year peak mean 1998/9- 2002/3)
	Black-tailed godwit , <i>Limosa limosa</i>	6849 individuals, representing an average of 19.5% of the population (5 year peak mean 1998/9-2002/3)

App C

	<i>islandica</i> , Iceland/W Europe	
	Species with peak counts in winter:	
	European golden plover , <i>Pluvialis apricaria apricaria</i> , <i>P. a. altifrons</i> Iceland & Faroes/E Atlantic	22033 individuals, representing an average of 2.3% of the population (5 year peak mean 1998/9-2002/3)
	Northern lapwing , <i>Vanellus vanellus</i> , Europe - breeding	46422 individuals, representing an average of 1.3% of the population (5 year peak mean 1998/9-2002/3)

Threats and Pressures at Habitats site which may be affected by VCHAP:
None identified in Ramsar Information Sheet.

The Greater Wash SPA⁵³

Conservation objectives:

Ensure that the integrity of the site is maintained or restored as appropriate, and ensure that the site contributes to achieving the aims of the Wild Birds Directive, by maintaining or restoring;

- The extent and distribution of the habitats of the qualifying features;
- The structure and function of the habitats of the qualifying features;
- The supporting processes on which the habitats of the qualifying features rely;
- The population of each of the qualifying features; and
- The distribution of the qualifying features within the site.

Qualifying Features:

A001 *Gavia stellata*; Red-throated diver (Non-breeding)
A065 *Melanitta nigra*; Common scoter (Non-breeding)
A177 *Hydrocoloeus minutus*; Little gull (Non-breeding)
A191 *Sterna sandvicensis*; Sandwich tern (Breeding)
A193 *Sterna hirundo*; Common tern (Breeding)
A195 *Sternula albifrons*; Little tern (Breeding)

North Norfolk Coast SPA⁵⁴

Conservation objectives:

Ensure that the integrity of the site is maintained or restored as appropriate, and ensure that the site contributes to achieving the aims of the Wild Birds Directive, by maintaining or restoring;

- The extent and distribution of the habitats of the qualifying features;
- The structure and function of the habitats of the qualifying features;

⁵³ Natural England (2019) The Greater Wash SPA Conservation Objectives. Available at: <http://publications.naturalengland.org.uk/file/4748062010638336> [Date Accessed: 22/11/22]

⁵⁴ Natural England (2019) North Norfolk Coast SPA Conservation Objectives. Available at: <http://publications.naturalengland.org.uk/file/4597105251581952> [Date Accessed: 22/11/22]

App C

- The supporting processes on which the habitats of the qualifying features rely;
- The population of each of the qualifying features; and
- The distribution of the qualifying features within the site.

Qualifying Features:

A021 *Botaurus stellaris*; Great bittern (Breeding)
 A040 *Anser brachyrhynchus*; Pink-footed goose (Non-breeding)
 A046a *Branta bernicla bernicla*; Dark-bellied brent goose (Non-breeding)
 A050 *Anas penelope*; Eurasian wigeon (Non-breeding)
 A081 *Circus aeruginosus*; Eurasian marsh harrier (Breeding)
 A084 *Circus pygargus*; Montagu's harrier (Breeding)
 A132 *Recurvirostra avosetta*; Pied avocet (Breeding)
 A143 *Calidris canutus*; Red knot (Non-breeding)
 A191 *Sterna sandvicensis*; Sandwich tern (Breeding)
 A193 *Sterna hirundo*; Common tern (Breeding)
 A195 *Sterna albifrons*; Little tern (Breeding)

Waterbird assemblage

Threats and Pressures at Habitats site which may be affected by VCHAP⁵⁵:

- Water levels;
- Public access and disturbance; and
- Air pollution.

North Norfolk Coast SAC⁵⁶

Conservation objectives:

Ensure that the integrity of the site is maintained or restored as appropriate, and ensure that the site contributes to achieving the Favourable Conservation Status of its Qualifying Features, by maintaining or restoring;

- The extent and distribution of qualifying natural habitats and habitats of qualifying species;
- The structure and function (including typical species) of qualifying natural habitats;
- The structure and function of the habitats of qualifying species;
- The supporting processes on which qualifying natural habitats and the habitats of qualifying species rely;
- The populations of qualifying species; and
- The distribution of qualifying species within the site.

Qualifying Features:

H1150. Coastal lagoons*
 H1220. Perennial vegetation of stony banks; Coastal shingle vegetation outside the reach of waves
 H1420. Mediterranean and thermo-Atlantic halophilous scrubs (*Sarcocornetea fruticosi*);
 Mediterranean saltmarsh scrub
 H2110. Embryonic shifting dunes
 H2120. Shifting dunes along the shoreline with *Ammophila arenaria* ("white dunes"); Shifting dunes with marram
 H2130. Fixed dunes with herbaceous vegetation ("grey dunes"); Dune grassland*

⁵⁵ Natural England (2014) The Wash and North Norfolk Coast SIP (to cover Gibraltar Point SPA, N Norfolk Coast SPA, North Norfolk Coast SAC, The Wash and North Norfolk Coast SAC and The Wash SPA). Available at: <http://publications.naturalengland.org.uk/file/6240487188987904> [Date Accessed: 22/11/22]

⁵⁶ Natural England (2018) North Norfolk Coast SAC Conservation Objectives. Available at: <http://publications.naturalengland.org.uk/file/5187288007180288> [Date Accessed: 22/11/22]

App C

H2190. Humid dune slacks
S1355. *Lutra lutra*; Otter
S1395. *Petalophyllum ralfsii*; Petalwort
* Priority natural habitats or species

Threats and Pressures at Habitats site which may be affected by VCHAP⁵⁷:

- Water levels;
- Public access and disturbance; and
- Air pollution.

North Norfolk Coast Ramsar⁵⁸

Ramsar sites do not have the Conservation Objectives in the same way as SPAs and SACs. Information regarding the designation of Ramsar sites is contained in INCC Ramsar Information Sheets. Ramsar Criteria are the criteria for identifying Wetlands of International Importance. The relevant criteria and ways in which this site meets the criteria are presented in the table below.

Ramsar Criterion	Justification for the application of each criterion				
1	Ramsar criterion 1 The site is one of the largest expanses of undeveloped coastal habitat of its type in Europe. It is a particularly good example of a marshland coast with intertidal sand and mud, saltmarshes, shingle banks and sand dunes. There are a series of brackish-water lagoons and extensive areas of freshwater grazing marsh and reed beds.				
2	Ramsar criterion 2 Supports at least three British Red Data Book and nine nationally scarce vascular plants, one British Red Data Book lichen and 38 British Red Data Book invertebrates.				
5	Assemblages of international importance: Species with peak counts in winter: 98462 waterfowl (5 year peak mean 1998/99-2002/2003)				
6	Ramsar criterion 6 – species/populations occurring at levels of international importance. Qualifying Species/populations (as identified at designation): <table border="1" style="width: 100%; border-collapse: collapse;"> <tr> <td colspan="2" style="text-align: center;">Species regularly supported during the breeding season:</td> </tr> <tr> <td style="width: 50%; vertical-align: top;">Sandwich tern , <i>Sterna (Thalasseus) sandvicensis sandvicensis</i>, W Europe</td> <td style="width: 50%; vertical-align: top;">4275 apparently occupied nests, representing an average of 7.7% of the breeding population (Seabird 2000 Census)</td> </tr> </table>	Species regularly supported during the breeding season:		Sandwich tern , <i>Sterna (Thalasseus) sandvicensis sandvicensis</i> , W Europe	4275 apparently occupied nests, representing an average of 7.7% of the breeding population (Seabird 2000 Census)
Species regularly supported during the breeding season:					
Sandwich tern , <i>Sterna (Thalasseus) sandvicensis sandvicensis</i> , W Europe	4275 apparently occupied nests, representing an average of 7.7% of the breeding population (Seabird 2000 Census)				

⁵⁷ Natural England (2014) The Wash and North Norfolk Coast SIP (to cover Gibraltar Point SPA, N Norfolk Coast SPA, North Norfolk Coast SAC, The Wash and North Norfolk Coast SAC and The Wash SPA). Available at: <http://publications.naturalengland.org.uk/file/6240487188987904> [Date Accessed: 22/11/22]

⁵⁸ JNCC. 2008. Information Sheet on Ramsar Wetlands. North Norfolk Coast Ramsar <https://jncc.gov.uk/jncc-assets/RIS/UK11048.pdf> [Date Accessed: 22/11/22].

App C

	Common tern , <i>Sterna hirundo hirundo</i> , N & E Europe	408 apparently occupied nests, representing an average of 4% of the GB population (Seabird 2000 Census)
	Little tern , <i>Sterna albifrons albifrons</i> , W Europe	291 apparently occupied nests, representing an average of 2.5% of the breeding population (Seabird 2000 Census)
	Species with peak counts in spring/autumn:	
	Red knot , <i>Calidris canutus islandica</i> , W & Southern Africa (wintering)	30781 individuals, representing an average of 6.8% of the population (5 year peak mean 1998/9-2002/3)
	Species with peak counts in winter:	
	Pink-footed goose , <i>Anser brachyrhynchus</i> , Greenland, Iceland/UK	16787 individuals, representing an average of 6.9% of the population (5 year peak mean 1998/9-2002/3)
	Dark-bellied brent goose, <i>Branta bernicla bernicla</i> ,	8690 individuals, representing an average of 4% of the population (5 year peak mean 1998/9- 2002/3)
	Eurasian wigeon , <i>Anas penelope</i> , NW Europe	17940 individuals, representing an average of 1.1% of the population (5 year peak mean 1998/9-2002/3)
	Northern pintail , <i>Anas acuta</i> , NW Europe	1148 individuals, representing an average of 1.9% of the population (5 year peak mean 1998/9-2002/3)
	Species/populations identified subsequent to designation for possible future consideration under criterion 6.	
	Species with peak counts in spring/autumn:	
	Ringed plover , <i>Charadrius hiaticula</i> , Europe/Northwest Africa	1740 individuals, representing an average of 2.3% of the population (5 year peak mean 1998/9-2002/3)
	Sanderling , <i>Calidris alba</i> , Eastern Atlantic	1303 individuals, representing an average of 1% of the population (5 year peak mean 1998/9- 2002/3)

App C

	Bar-tailed godwit , <i>Limosa lapponica</i> <i>lapponica</i> , W Palearctic	3933 individuals, representing an average of 3.2% of the population (5 year peak mean 1998/9-2002/3)	
Threats and Pressures at Habitats site which may be affected by VCHAP: None identified in Ramsar Information Sheet.			
Southern North Sea SAC ⁵⁹			
<p>Conservation objectives: To ensure that the integrity of the site is maintained and that it makes the best possible contribution to maintaining Favourable Conservation Status (FCS) for Harbour Porpoise in UK waters:</p> <p>In the context of natural change, this will be achieved by ensuring that:</p> <ul style="list-style-type: none"> • 1. Harbour porpoise is a viable component of the site; • 2. There is no significant disturbance of the species; and • 3. The condition of supporting habitats and processes, and the availability of prey is maintained. <p>Qualifying Features: 1351: Harbour porpoise (<i>Phocoena phocoena</i>)</p> <p>Threats and Pressures at Habitats site which may be affected by VCHAP⁶⁰:</p> <ul style="list-style-type: none"> • Public access and disturbance (boating). 			
Outer Thames Estuary SPA ⁶¹			
<p>Conservation objectives: Ensure that the integrity of the site is maintained or restored as appropriate, and ensure that the site contributes to achieving the aims of the Wild Birds Directive, by maintaining or restoring;</p> <ul style="list-style-type: none"> • The extent and distribution of the habitats of the qualifying features; • The structure and function of the habitats of the qualifying features; • The supporting processes on which the habitats of the qualifying features rely; • The population of each of the qualifying features; and • The distribution of the qualifying features within the site. <p>Qualifying Features: A001 <i>Gavia stellata</i>; Red-throated diver (Non-breeding) A193 <i>Sterna hirundo</i>; Common tern (Breeding) A195 <i>Sternula albifrons</i>; Little tern (Breeding)</p>			

⁵⁹ JNCC (2019) Southern North Sea SAC Conservation Objectives. Available at:
<http://data.jncc.gov.uk/data/206f2222-5c2b-4312-99ba-d59dfd1dec1d/SouthernNorthSea-conservation-advice.pdf> [Date Accessed: 22/11/22]

⁶⁰ JNCC. Natural England. March 2019. Harbour Porpoise (*Phocoena phocoena*) Special Area of Conservation: Southern North Sea Conservation Objectives and Advice on Operations. Available at:
<https://infrastructure.planninginspectorate.gov.uk/wp-content/ipc/uploads/projects/EN010079/EN010079-002860-ExA%3B%20ISH6%3B%2010.D7.12%20Harbour%20Porpoise%20SAC%20Conservation%20Objectives%20and%20Advice.pdf> [Date Accessed: 22/11/22]

⁶¹ Natural England (2019) Outer Thames Estuary SPA Conservation Objectives. Available at:
<http://publications.naturalengland.org.uk/file/5184120712069120> [Date Accessed: 22/11/22]

Threats and Pressures at Habitats site which may be affected by VCHAP⁶²:

- No threats identified that could be increased / effected by VCHAP.

Hainsborough, Hammond and Winterton SAC⁶³

Conservation objectives:

Ensure that the integrity of the site is maintained or restored as appropriate, and ensure that the site contributes to achieving the aims of the Wild Birds Directive, by maintaining or restoring;

- The extent and distribution of qualifying natural habitats and habitats of the qualifying species
- The structure and function (including typical species) of qualifying natural habitats
- The structure and function of the habitats of the qualifying species
- The supporting processes on which qualifying natural habitats and the habitats of qualifying species rely
- The populations of each of the qualifying species
- The distribution of qualifying species within the site

Qualifying Features:

1170 Reefs

1110 Sandbanks which are slightly covered by sea water all the time

Threats and Pressures at Habitats site which may be affected by VCHAP⁶⁴:

- Recreation.

⁶² Natural England (2015) Outer Thames Estuary SPA SIP. Available at:
<http://publications.naturalengland.org.uk/file/5877617494327296> [Date Accessed: 22/11/22]

⁶³ JNCC Hainsborough, Hammond and Winterton SAC . Available at: <https://jncc.gov.uk/our-work/haisborough-hammond-and-winterton-mpa/> [Date Accessed: 22/11/22]

⁶⁴ Natural England. Hainsborough, Hammond and Winterton SAC. Available at:
<https://designatedsites.naturalengland.org.uk/Marine/FAPMatrix.aspx?SiteCode=UK0030369&SiteName=hais&SiteNameDisplay=Haisborough%2c+Hammond+and+Winterton+SAC&countyCode=&responsiblePerson=&SeaArea=&IFCAArea=&NumMarineSeasonality=0> [Date Accessed: 22/11/22]

Appendix D: Site of Special Scientific Interest Condition Data

Habitat site	SSSI Name	No. of SSSI Units	Conservation Status of SSSI Units ¹	Reason for unfavourable declining status where applicable.
River Wensum SAC	River Wensum SSSI	55	6 Favourable	n/a
			12 Unfavourable - recovering	n/a
			37 Unfavourable – declining	Dominant vegetation. Opportunities for river restoration. Hydrological connectivity not appropriate.
Norfolk Valley Fens SAC	Badley Moor SSSI	4	4 Favourable	n/a
	Booton Common SSSI	1	1 Unfavourable - recovering	n/a
	Buxton Heath SSSI	1	1 Unfavourable - recovering	n/a
	Coston Fen, Funhall SSSI	1	1 Unfavourable – no change	n/a
	East Walton and Adcock's Common SSSI	3	3 Unfavourable - recovering	n/a
	Flordon Common SSSI	2	1 Favourable	n/a
			1 Unfavourable - recovering	n/a
	Foulden Common SSSI	7	2 Favourable	n/a
			4 Unfavourable - recovering	n/a
			1 Unfavourable – declining	The designated interest features S2, S25, M13, M22 & M24 all failed the condition assessment on the quantity of positive indicator species present. The cover of litter was also above the desired threshold and the unit is at risk

¹ Natural England. Designated Site View. <https://designatedsites.naturalengland.org.uk/>. Site condition data is provided for the SSSIs which legally underpin European site designations [Date Accessed: 23/04/21].

Habitat site	SSSI Name	No. of SSSI Units	Conservation Status of SSSI Units ¹	Reason for unfavourable declining status where applicable.
				from the development of scrub.
	Great Cressingham Fen SSSI	1	1 Unfavourable - recovering	n/a
	Hotl Lowes SSSI	2	1 Favourable	n/a
			1 Unfavourable - recovering	n/a
	Potter & Scarning Fens, East Dereham SSSI	2	2 Unfavourable - recovering	n/a
	Sheringham and Beeston Regis Commons SSSI	2	2 Unfavourable - recovering	n/a
	Southrepps Common SSSI	1	1 Unfavourable - recovering	n/a
	Swangey Fen, Attleborough SSSI	6	5 Favourable	n/a
			1 Unfavourable - recovering	n/a
	Thompson Water, Carr and Common SSSI	11	8 Favourable	n/a
			2 Unfavourable - recovering	n/a
1 Unfavourable – declining			Currently this site is considered unfavourable, due to the lack of any broad-leaved pondweeds, not meeting the TP target and oxygen concentrations too low to support characteristic fauna. The change in macrophyte community structure is likely to be a response to the availability of nutrients and is also a cause for concern.	
The Broads SAC	Alderfen Broad SSSI	3	1 Favourable	n/a
			2 Unfavourable - recovering	n/a
		35	24 Favourable	n/a

Habitat site	SSSI Name	No. of SSSI Units	Conservation Status of SSSI Units ¹	Reason for unfavourable declining status where applicable.
	Ant Broads and Marshes SSSI		8 Unfavourable - recovering	n/a
			3 Unfavourable – declining	Possible nutrient enrichment.
	Barnby Broad and Marshes SSSI	24	11 Favourable	n/a
			13 Unfavourable - recovering	n/a
	Broad Fen, Dilham SSSI	1	1 Unfavourable - recovering	n/a
	Bure Broads and Marshes SSSI	14	5 Favourable	n/a
			4 Unfavourable – no change	n/a
			5 Unfavourable - recovering	n/a
	Burgh Common and Muckfleet Marshes SSSI	9	4 Favourable	n/a
			1 Unfavourable – no change	n/a
			4 Unfavourable - recovering	n/a
	Calthorpe Broad SSSI	3	2 Favourable	n/a
			1 Unfavourable - recovering	n/a
	Cantley Marshes SSSI	3	23 Favourable	n/a
	Croswick Marsh SSSI	1	1 Unfavourable – no change	n/a
	Damgate Marshes, Acle SSSI	10	6 Favourable	n/a
			4 Unfavourable - recovering	n/a
	Decoy Car, Acle SSSI	6	4 Favourable	n/a
			2 Unfavourable - recovering	n/a
	Duncan's Marsh, Claxton SSSI	2	2 Unfavourable - recovering	n/a
Geldeston Meadows SSSI	2	2 Unfavourable – no change	n/a	
		2 Unfavourable – declining	No comment provided.	
Hall Farm Fen, Hemsby SSSI	1	1 Favourable	n/a	

Habitat site	SSSI Name	No. of SSSI Units	Conservation Status of SSSI Units ¹	Reason for unfavourable declining status where applicable.
	Halvergate Marshes SSSI	36	21 Favourable	n/a
			2 Unfavourable – no change	n/a
			9 Unfavourable - recovering	n/a
	Hardley Flood SSSI	2	2 Favourable	n/a
	Limpenhoe Meadows SSSI	1	1 Unfavourable - recovering	n/a
	Ludham – Potter Heigham Marshes SSSI	6	6 Favourable	n/a
	Poplar Farm Meadows, Langley SSSI	1	1 Favourable	n/a
	Priory Meadows, Hickling SSSI	2	1 Favourable	n/a
			1 Unfavourable - recovering	n/a
	Shallam Dyke Marshes, Thurne SSSI	8	2 Favourable	n/a
			6 Unfavourable – no change	n/a
	Sprat's Water and Marshes, Carlton Colville SSSI	12	7 Favourable	n/a
			2 Unfavourable – no change	n/a
			3 Unfavourable - recovering	n/a
	Smallburgh Fen SSSI	1	1 Favourable	n/a
	Stanley and Alder Carrs, Aldeby SSSI	3	3 Unfavourable - recovering	n/a
	Trinity Broads SSSI	23	15 Favourable	n/a
1 Unfavourable – no change			n/a	
7 Unfavourable - recovering			n/a	
Upper Thurne Broads and Marshes SSSI	19	11 Favourable	n/a	
		3 Unfavourable – no change	n/a	
		2 Unfavourable - recovering	n/a	

Habitat site	SSSI Name	No. of SSSI Units	Conservation Status of SSSI Units ¹	Reason for unfavourable declining status where applicable.	
	Upton Broad & Marshes SSSI	18	3 Unfavourable – declining	Water quality and abstraction.	
			8 Favourable	n/a	
			1 Unfavourable – no change	n/a	
			9 Unfavourable - recovering	n/a	
	Yare Broads and Marshes SSSI	28	7 Favourable	n/a	
			9 Unfavourable – no change	n/a	
			5 Unfavourable - recovering	n/a	
			5 Unfavourable – declining	Nutrient enrichment. Overfeeding of duck for shooting with possible contribution from agricultural run-off.	
	Broadland SPA and Ramsar	Alderfen Broad SSSI	3	1 Favourable	n/a
				2 Unfavourable - recovering	n/a
Ant Broads and Marshes SSSI		35	24 Favourable	n/a	
			8 Unfavourable - recovering	n/a	
			3 Unfavourable – declining	Possible nutrient enrichment.	
Barnby Broad and Marshes SSSI		24	11 Favourable	n/a	
			13 Unfavourable - recovering	n/a	
Broad Fen, Dilham SSSI		1	1 Unfavourable - recovering	n/a	
Bure Broads and Marshes SSSI		14	5 Favourable	n/a	
			4 Unfavourable – no change	n/a	
			5 Unfavourable - recovering	n/a	
Burgh Common and Muckfleet Marshes SSSI		9	4 Favourable	n/a	
			1 Unfavourable – no change	n/a	
			4 Unfavourable - recovering	n/a	
			3	2 Favourable	n/a

Habitat site	SSSI Name	No. of SSSI Units	Conservation Status of SSSI Units ¹	Reason for unfavourable declining status where applicable.
	Calthorpe Broad SSSI		1 Unfavourable - recovering	n/a
	Cantley Marshes SSSI	3	23 Favourable	n/a
	Crostick Marsh SSSI	1	1 Unfavourable – no change	n/a
	Decoy Car, Acle SSSI	6	4 Favourable	n/a
			2 Unfavourable - recovering	n/a
	Duncan's Marsh, Claxton SSSI	2	2 Unfavourable - recovering	n/a
	Geldeston Meadows SSSI	2	2 Unfavourable – no change	n/a
			2 Unfavourable – declining	No comment provided.
	Hall Farm Fen, Hemsby SSSI	1	1 Favourable	n/a
	Halvergate Marshes SSSI	36	21 Favourable	n/a
			2 Unfavourable – no change	n/a
			9 Unfavourable - recovering	n/a
	Hardley Flood SSSI	2	2 Favourable	n/a
	Limpenhoe Meadows SSSI	1	1 Unfavourable - recovering	n/a
	Ludham – Potter Heigham Marshes SSSI	6	6 Favourable	n/a
	Poplar Farm Meadows, Langley SSSI	1	1 Favourable	n/a
	Priory Meadows, Hickling SSSI	2	1 Favourable	n/a
			1 Unfavourable - recovering	n/a
	Shallam Dyke Marshes, Thurne SSSI	8	2 Favourable	n/a
			6 Unfavourable – no change	n/a
		12	7 Favourable	n/a

Habitat site	SSSI Name	No. of SSSI Units	Conservation Status of SSSI Units ¹	Reason for unfavourable declining status where applicable.
	Sprat's Water and Marshes, Carlton Colville SSSI		2 Unfavourable – no change	n/a
			3 Unfavourable - recovering	n/a
	Smallburgh Fen SSSI	1	1 Favourable	n/a
	Stanley and Alder Carrs, Aldeby SSSI	3	3 Unfavourable - recovering	n/a
	Upper Thurne Broads and Marshes SSSI	19	11 Favourable	n/a
			3 Unfavourable – no change	n/a
			2 Unfavourable - recovering	n/a
			3 Unfavourable – declining	Water quality and abstraction.
	Upton Broad & Marshes SSSI	18	8 Favourable	n/a
			1 Unfavourable – no change	n/a
			9 Unfavourable - recovering	n/a
	Yare Broads and Marshes SSSI	28	7 Favourable	n/a
			9 Unfavourable – no change	n/a
			5 Unfavourable - recovering	n/a
5 Unfavourable – declining			Nutrient enrichment. Overfeeding of duck for shooting with possible contribution from agricultural run-off.	
Breydon Water SPA and Ramsar	Breydon Water SSSI	15	15 Favourable	n/a
	Halvergate Marshes SSSI	42	29 Favourable	n/a
			3 Unfavourable – no change	n/a
			10 Unfavourable - recovering	n/a
Great Yarmouth North Deans SPA	Great Yarmouth North Denes SSSI	2	2 Favourable	n/a
		12	7 Favourable	n/a

Habitat site	SSSI Name	No. of SSSI Units	Conservation Status of SSSI Units ¹	Reason for unfavourable declining status where applicable.
	Winterton-Horsey Dunes SSSI		4 Unfavourable – no change	n/a
			1 Unfavourable - recovering	n/a
Winterton-Horsey Dunes SAC	Winterton-Horsey Dunes SSSI	12	7 Favourable	n/a
			4 Unfavourable – no change	n/a
			1 Unfavourable - recovering	n/a
Waveney & Little Ouse Valley SAC	Blo' Norton and Thelnetham Fens SSSI	6	3 Favourable	n/a
			3 Unfavourable – recovering	n/a
	Redgrave and Lopham Fens SSSI	4	4 Unfavourable – recovering	n/a
	Weston Fen, Suffolk SSSI	10	5 Favourable	n/a
			2 Unfavourable – no change	n/a
			3 Unfavourable - recovering	n/a
Redgrave and South Lopham Fens Ramsar	Redgrave and Lopham Fens SSSI	4	4 Unfavourable – recovering	n/a
Breckland SAC	Barnhamcross Common SSSI	2	2 Unfavourable – recovering	n/a
	Berner's Heath, Icklingham SSSI	3	1 Favourable	n/a
			2 Destroyed	Agriculture. Unit 6 and 7 are part of a field designated as Berner's Heath SSSI. Specialist advice is to undertake a notification amendment to include this area of land within the Breckland Farmland SSSI and to have stone curlew as the sole interest feature. Following such an amendment this area could be considered favourable.
	Bridgham & Brettenham Heaths SSSI	6	2 Favourable	n/a
			4 Unfavourable – recovering	n/a

Habitat site	SSSI Name	No. of SSSI Units	Conservation Status of SSSI Units ¹	Reason for unfavourable declining status where applicable.
	Cavenham – Icklingham Heaths SSSI	27	14 Favourable	n/a
			1 Unfavourable – no change	n/a
			11 Unfavourable - recovering	n/a
			1 Destroyed	Site is destroyed therefore no change since last assessment.
	Cranwich Camp SSSI	1	1 Unfavourable - recovering	n/a
	Deadman's Grave, Icklingham SSSI	6	3 Favourable	n/a
			2 Unfavourable – recovering	n/a
			1 Unfavourable - declining	Agriculture
	East Wretham Heath SSSI	6	1 Favourable	n/a
			4 Unfavourable – recovering	n/a
			1 Unfavourable - declining	Ringmere: there has been a considerable loss of aquatic species since the last assessment, but all terrestrial and amphibious characteristic species previously recorded were present. High nutrient levels recorded in previous water analysis suggest nutrients are impacting the mere. Langmere: the near absence of open water made it impossible to assess the aquatic zone, but the mud and inundation zones were well developed and in good condition. However, there are some factors that point towards elevated nutrient levels at Langmere,.
	Field Barn Heaths, Hilborough SSSI	1	1 Unfavourable – recovering	n/a

Habitat site	SSSI Name	No. of SSSI Units	Conservation Status of SSSI Units ¹	Reason for unfavourable declining status where applicable.
	Foxhole Heath, Eriswell SSSI	1	1 Favourable	n/a
	Gooderstone Warren SSSI	4	4 Unfavourable – recovering	n/a
	Grime’s Grave SSSI	3	1 Favourable	n/a
			2 Unfavourable – recovering	n/a
	Lakenheath Warren SSSI	11	5 Unfavourable – no change	n/a
			6 Unfavourable - recovering	n/a
	RAF Lakenheath SSSI	4	4 Favourable	n/a
	Stanford Training Area	81	29 Favourable	n/a
			2 Unfavourable – no change	n/a
			28 Unfavourable - recovering	n/a
			2 Unfavourable - declining	Unsuitable bat habitat (Unit 072). Poor diversity of aquatic vegetation (Unit 089).
	Thetford Golf Course & Marsh SSSI	8	1 Favourable	n/a
			2 Unfavourable – no change	n/a
			5 Unfavourable - recovering	n/a
	Thetford Heaths SSSI	4	2 Favourable	n/a
			1 Unfavourable – no change	n/a
			1 Unfavourable - recovering	n/a
	Wangford Warren and Carr SSSI	5	1 Favourable	n/a
			4 Unfavourable - recovering	n/a
	Weather and Horn Heaths, Eriswell SSSI	3	2 Unfavourable - declining	Agriculture
Partially destroyed			The majority of this unit has been destroyed by the construction of the dualled A11.	

Habitat site	SSSI Name	No. of SSSI Units	Conservation Status of SSSI Units ¹	Reason for unfavourable declining status where applicable.
Breckland SPA	Weeting Heath SSSI	6	2 Favourable	n/a
			1 Unfavourable – no change	n/a
			3 Unfavourable - recovering	n/a
	Barnham Heath SSSI	2	1 Favourable	n/a
			1 Unfavourable - recovering	n/a
	Barnhamcross Common SSSI	2	2 Unfavourable – recovering	n/a
	Berner's Heath, Icklingham SSSI	3	1 Favourable	n/a
			2 Destroyed	Agriculture. Unit 6 and 7 are part of a field designated as Berner's Heath SSSI. Specialist advice is to undertake a notification amendment to include this area of land within the Breckland Farmland SSSI and to have stone curlew as the sole interest feature. Following such an amendment this area could be considered favourable.
	Breckland Farm SSSI	70	70 Favourable	n/a
	Breckland Forest SSSI	7	2 Favourable	n/a
			4 Unfavourable – recovering	n/a
	Bridgham & Brettenham Heaths SSSI	6	2 Favourable	n/a
			4 Unfavourable – recovering	n/a
	Cavenham – Icklingham Heaths SSSI	27	14 Favourable	n/a
			1 Unfavourable – no change	n/a
11 Unfavourable - recovering			n/a	
1 Destroyed			Site is destroyed therefore no change since last assessment.	
	4	1 Favourable	n/a	

Habitat site	SSSI Name	No. of SSSI Units	Conservation Status of SSSI Units ¹	Reason for unfavourable declining status where applicable.
	Cranberry Rough Hockham SSSI		3 Unfavourable - recovering	n/a
	Cranwich Camp SSSI	1	1 Unfavourable - recovering	n/a
	Deadman's Grave, Icklingham SSSI	6	3 Favourable	n/a
			2 Unfavourable – recovering	n/a
			1 Unfavourable - declining	Agriculture
	East Wretham Heath SSSI	6	1 Favourable	n/a
			4 Unfavourable – recovering	n/a
			1 Unfavourable - declining	Ringmere: there has been a considerable loss of aquatic species since the last assessment, but all terrestrial and amphibious characteristic species previously recorded were present. High nutrient levels recorded in previous water analysis suggest nutrients are impacting the mere. Langmere: the near absence of open water made it impossible to assess the aquatic zone, but the mud and inundation zones were well developed and in good condition. However, there are some factors that point towards elevated nutrient levels at Langmere,.
	Eriswell Low Warren SSSI	1	1 Favourable	n/a
	Field Barn Heaths, Hilborough SSSI	1	1 Unfavourable – recovering	n/a
	Foxhole Heath, Eriswell SSSI	1	1 Favourable	n/a
	Gooderstone Warren SSSI	4	4 Unfavourable – recovering	n/a

Habitat site	SSSI Name	No. of SSSI Units	Conservation Status of SSSI Units ¹	Reason for unfavourable declining status where applicable.
	Grime's Grave SSSI	3	1 Favourable	n/a
			2 Unfavourable – recovering	n/a
	How Hill Track SSSI	1	1 Favourable	n/a
	Lakenheath Warren SSSI	11	5 Unfavourable – no change	n/a
			6 Unfavourable - recovering	n/a
	Little Heath, Barnham SSSI	3	1 Favourable	n/a
			1 Unfavourable - recovering	n/a
			1 Unfavourable – declining	Agriculture
	Old Bodney Camp SSSI	2	2 Favourable	n/a
	Rex Graham Reserve SSSI	1	1 Favourable	n/a
	Stanford Training Area	81	29 Favourable	n/a
			2 Unfavourable – no change	n/a
			28 Unfavourable - recovering	n/a
			2 Unfavourable - declining	Unsuitable bat habitat (Unit 072). Poor diversity of aquatic vegetation (Unit 089).
	Thetford Golf Course & Marsh SSSI	8	1 Favourable	n/a
			2 Unfavourable – no change	n/a
			5 Unfavourable - recovering	n/a
	Thetford Heaths SSSI	4	2 Favourable	n/a
			1 Unfavourable – no change	n/a
			1 Unfavourable - recovering	n/a
Wangford Warren and Carr SSSI	5	1 Favourable	n/a	
		4 Unfavourable - recovering	n/a	

Habitat site	SSSI Name	No. of SSSI Units	Conservation Status of SSSI Units ¹	Reason for unfavourable declining status where applicable.
	Weather and Horn Heaths, Eriswell SSSI	3	2 Unfavourable - declining	Agriculture
			Partially destroyed	The majority of this unit has been destroyed by the construction of the dualled A11.
	Weeting Heath SSSI	6	2 Favourable	n/a
			1 Unfavourable – no change	n/a
			3 Unfavourable - recovering	n/a
	West Stow Heath SSSI	5	1 Favourable	n/a
			4 Unfavourable - recovering	n/a
Benacre to Easton Barents Lagoons SAC and SPA	Pakefield to Easton Barents SSSI	51	30 Favourable	n/a
			4 Unfavourable – no change	n/a
			17 Unfavourable - recovering	n/a
			1 Unfavourable – declining	Water pollution
			Partially destroyed	Coastal erosion
The Wash and North Norfolk Coast SAC	Gibraltar Point SSSI	5	2 Favourable	n/a
			2 Unfavourable - recovering	n/a
			1 Unfavourable – declining	Air pollution
	North Norfolk Coast SSSI	70	67 Favourable	n/a
			3 Unfavourable - recovering	n/a
	The Wash SSSI	60	48 Favourable	n/a
			11 Unfavourable - recovering	n/a
1 Unfavourable – declining			No reason stated	
The Wash SPA/Ramsar	The Wash SSSI	60	48 Favourable	n/a
			11 Unfavourable - recovering	n/a

Habitat site	SSSI Name	No. of SSSI Units	Conservation Status of SSSI Units ¹	Reason for unfavourable declining status where applicable.
			1 Unfavourable – declining	No reason stated
North Norfolk Coast SAC	North Norfolk Coast SSSI	70	67 Favourable	n/a
			3 Unfavourable - recovering	n/a
North Norfolk Coast SPA and Ramsar	North Norfolk Coast SSSI	70	67 Favourable	n/a
			3 Unfavourable - recovering	n/a
	Morston Cliff	1	1 Unfavourable - recovering	n/a

Appendix E: Regulation 19 VCHAP HRA Pre-Screening Summary

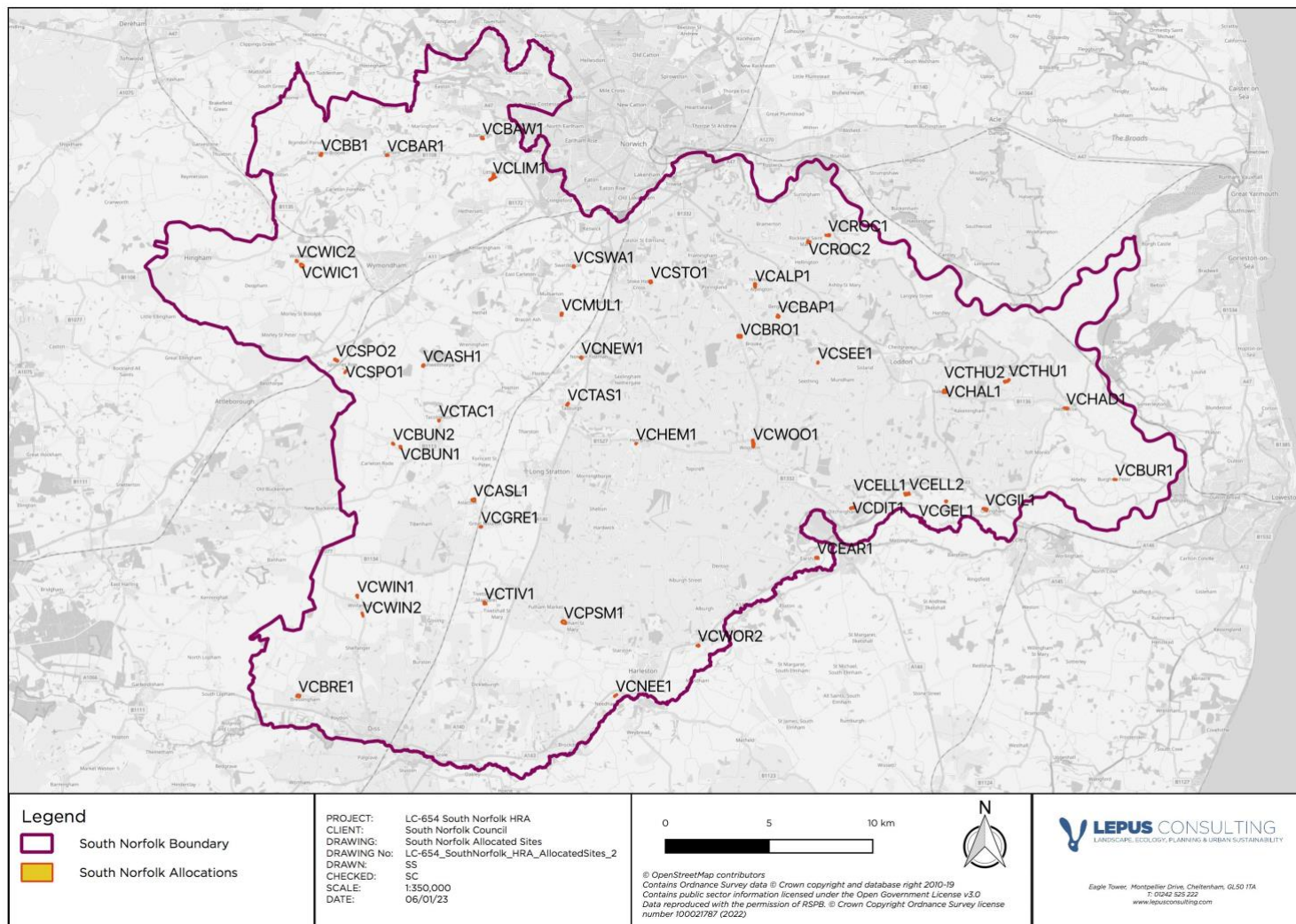


Figure F.1: Allocated sites - Regulation 19 VCHAP

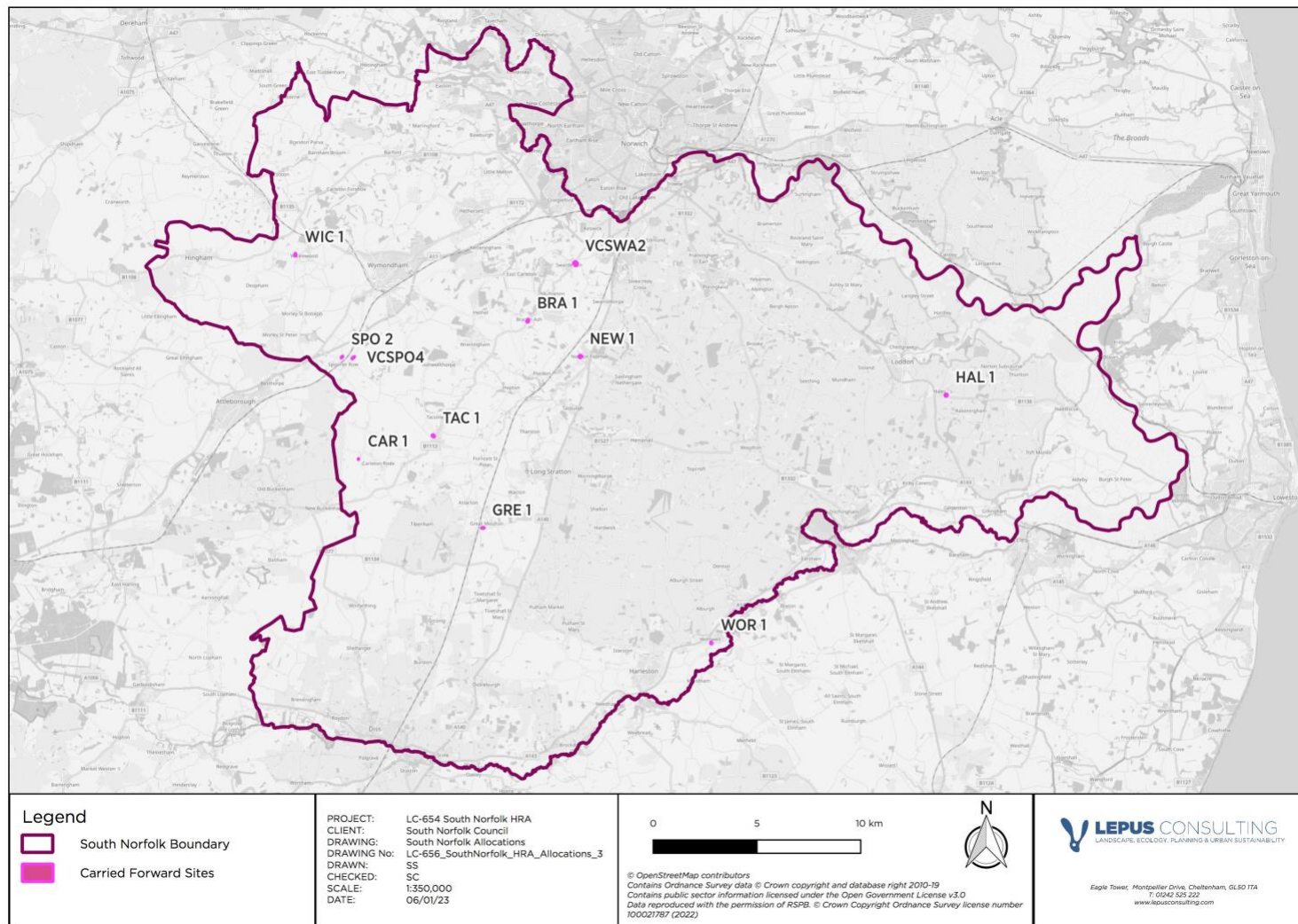


Figure F.2: Carried forward sites - Regulation 19 VCHAP

Table F.1: Pre-screening summary of the Regulation 19 VCHAP

The Plan Objectives

Objective Number	Objective Name	Pre-Screening for LSE	Pre-Screening Conclusion
SNVC Objective 1	SNVC Objective 1 - Meet housing needs	This objective sets out the requirements to deliver housing in accordance with the GNLP. This policy triggers development with potential for LSEs in-combination with other plans and projects in terms of water quality, public access and disturbance and habitat loss and fragmentation LSEs – Category L.	Screened in.
SNVC Objective 2	SNVC Objective 2 - Protecting village communities and support rural services and facilities	This objective aims to guide housing development to support communities and village facilities and services. It does not trigger any development or change and can therefore be screened out under Category B.	Screened out.
SNVC Objective 3	SNVC Objective 3 - Protect the character of villages and their settings	This objective aims to guide housing development to protect the character of villages and their settings. The policy is positive in nature aiming to protect village character, it does not trigger any development or change and can therefore be screened out under Category D.	Screened out.

Village Cluster Allocations Policies

Village Cluster Number and Name	Policy Number and Name	Other relevant information	Pre-Screening for LSE	Pre-Screening Conclusion
1 – Alburgh and Denton	No Allocations	n/a	This section of the VCHAP cannot lead to development or other change and is therefore screened out under Category F.	Screen out.
2 - Alington, Yelverton and Bergh Apton	Policy VC ALP1 - West of Church Meadow, Alington	25 dwellings	<p>AQ: Given scale of development proposed in the VHCAP, air quality LSEs have been screened out for all policies alone and / or in-combination.</p> <p>Hydrology. This allocation is not located in the River Wensum SAC, Broads SAC or Broadland Ramsar hydrological catchment (see Appendix A) and therefore nutrient enrichment LSEs are unlikely and have been screened out. The site is however located in the hydrological catchment for other Habitats sites (Breydon Water SPA and Breydon Water Ramsar) and possible issues may include in-combination contaminated surface run off and /or increased demand for water. LSEs in-combination on hydrology have therefore been screened in.</p> <p>Public access and disturbance: This allocation is located within the Broads Sites, the Wash sites, the East Coast sites and the Norfolk Valley Fens sites recreational ZOIs for residential development (see Section 6.5 of main HRA report for more information on recreational ZOIs). As such, in-combination recreational LSEs have been screened in. The site is located more than 400m from any Habitats site and therefore urbanisation impacts are screened out.</p> <p>Habitat loss and fragmentation: A review of aerial photography indicates that this allocation is an arable field immediately adjacent to the developed area of Alington. The closest component of the Broadland SPA and Ramsar is more than 4,250m to the east of the site. The A146 and numerous field boundaries separate the allocation from these designations restricting bird sight lines and providing a source of disturbance. There is unlikely to be loss of functionally linked / supporting habitat associated with any Habitats site. Likely significant habitat loss and fragmentation impacts have therefore been screened out.</p> <p>This policy is screened in under Category I (recreational disturbance) and Category L (hydrology).</p>	Screened in.
2 - Alington, Yelverton and Bergh Apton	Policy VC BAP1 – Former Concrete Batching	25 dwellings	<p>AQ: Given scale of development proposed in the VHCAP, air quality LSEs have been screened out for all policies alone and / or in-combination.</p> <p>Hydrology. This allocation is not located in the River Wensum SAC, Broads SAC or Broadland Ramsar hydrological catchment (see Appendix A) and therefore nutrient enrichment LSEs are unlikely and have been screened out. The site is however located in the hydrological catchment for</p>	Screened in.

Village Cluster Number and Name	Policy Number and Name	Other relevant information	Pre-Screening for LSE	Pre-Screening Conclusion
	Plant, south of Church Road, Berg Apton		<p>other Habitats sites (Breydon Water SPA and Breydon Water Ramsar) and possible issues may include in-combination contaminated surface run off and /or increased demand for water. LSEs in-combination on hydrology have therefore been screened in.</p> <p>Public access and disturbance: This allocation is located within the Broads Sites, the Wash sites, the East Coast sites and the Norfolk Valley Fens sites recreational ZOIs for residential development (see Section 6.5 of main HRA report for more information on recreational ZOIs). As such, in-combination recreational LSEs have been screened in. The site is located more than 400m from any Habitats site and therefore urbanisation impacts are screened out.</p> <p>Habitat loss and fragmentation: A review of aerial photography indicates that this allocation is a brownfield site (former concrete batching plant). There is unlikely to be loss of functionally linked / supporting habitat associated with any Habitats site. Likely significant habitat loss and fragmentation impacts have therefore been screened out.</p> <p>This policy is screened in under Category I (recreational disturbance) and Category L (hydrology).</p>	
3 - Aslacton, Great Moulton and Tibenham	Policy VC ASL1 - Land off Church Road, Aslacton	35 dwellings	<p>AQ: Given scale of development proposed in the VHCAP, air quality LSEs have been screened out for all policies alone and / or in-combination.</p> <p>Hydrology. This allocation is not located in the River Wensum SAC hydrological catchment but is within the Broads SAC or Broadland Ramsar hydrological catchment (see Appendix A) and therefore nutrient enrichment LSEs are likely and have been screened in. The site is also potentially located in the hydrological catchment for other Habitats sites (Broadland SPA, Breydon Water SPA and Breydon Water Ramsar) and possible issues may include in-combination contaminated surface run off and /or increased demand for water. LSEs alone on hydrology have therefore been screened in.</p> <p>Public access and disturbance: This allocation is located within the North Brecks sites, Broads sites, the Wash sites and the Norfolk Valley Fens sites recreational ZOIs for residential development (see Section 6.5 of main HRA report for more information on recreational ZOIs). As such, in-combination recreational LSEs have been screened in. The site is located more than 400m from any Habitats site and therefore urbanisation impacts are screened out.</p> <p>Habitat loss and fragmentation: A review of aerial photography indicates that this allocation is an arable field immediately adjacent to the developed area of Aslacton. The closest component of the Broadland SPA and Ramsar is more than 22km to the east of the site. Strategic road, rail infrastructure and numerous field boundaries separate the allocation from these designations restricting bird sight lines and providing a source of disturbance. There is unlikely to be loss of</p>	Screened in.

Village Cluster Number and Name	Policy Number and Name	Other relevant information	Pre-Screening for LSE	Pre-Screening Conclusion
			<p>functionally linked / supporting habitat associated with any Habitats site. Likely significant habitat loss and fragmentation impacts have therefore been screened out.</p> <p>This policy is screened in under Category I (recreational disturbance and hydrology).</p>	
3 - Aslacton, Great Moulton and Tibenham	Policy VC GRE1 - North of High Green, west of Heather Way, Great Moulton	12 dwellings	<p>AQ: Given scale of development proposed in the VHCAP, air quality LSEs have been screened out for all policies alone and / or in-combination.</p> <p>Hydrology. This allocation is not located in the River Wensum SAC hydrological catchment but is within the Broads SAC or Broadland Ramsar hydrological catchment (see Appendix A) and therefore nutrient enrichment LSEs are likely and have been screened in. The site is also potentially located in the hydrological catchment for other Habitats sites (Broadland SPA, Breydon Water SPA and Breydon Water Ramsar) and possible issues may include in-combination contaminated surface run off and /or increased demand for water. LSEs alone on hydrology have therefore been screened in.</p> <p>Public access and disturbance: This allocation is located within the North Brecks sites, Broads sites, the Wash sites and the Norfolk Valley Fens sites recreational ZOIs for residential development (see Section 6.5 of main HRA report for more information on recreational ZOIs). As such, in-combination recreational LSEs have been screened in. The site is located more than 400m from any Habitats site and therefore urbanisation impacts are screened out.</p> <p>Habitat loss and fragmentation: A review of aerial photography indicates that this allocation is an arable field immediately adjacent to the developed area of Great Moulton. The closest component of the Broadland SPA and Ramsar is more than 22km to the east of the site. Strategic road, rail infrastructure and numerous field boundaries separate the allocation from these designations restricting bird sight lines and providing a source of disturbance. There is unlikely to be loss of functionally linked / supporting habitat associated with any Habitats site. Likely significant habitat loss and fragmentation impacts have therefore been screened out.</p> <p>This policy is screened in under Category I (recreational disturbance and hydrology).</p>	Screened in.
3 - Aslacton, Great Moulton and Tibenham	Policy VC GRE2 – Land north of High Green opposite White House	14 dwellings	<p>AQ: Given scale of development proposed in the VHCAP, air quality LSEs have been screened out for all policies alone and / or in-combination.</p> <p>Hydrology. This allocation is not located in the River Wensum SAC hydrological catchment but is within the Broads SAC or Broadland Ramsar hydrological catchment (see Appendix A) and therefore nutrient enrichment LSEs are likely and have been screened in. The site is also potentially located in the hydrological catchment for other Habitats sites (Broadland SPA, Breydon Water SPA and</p>	Screened in.

Village Cluster Number and Name	Policy Number and Name	Other relevant information	Pre-Screening for LSE	Pre-Screening Conclusion
	Farm Bungalow		<p>Breydon Water Ramsar) and possible issues may include in-combination contaminated surface run off and /or increased demand for water. LSEs alone on hydrology have therefore been screened in.</p> <p>Public access and disturbance: This allocation is located within the North Brecks sites, Broads sites, the Wash sites and the Norfolk Valley Fens sites recreational ZOIs for residential development (see Section 6.5 of main HRA report for more information on recreational ZOIs). As such, in-combination recreational LSEs have been screened in. The site is located more than 400m from any Habitats site and therefore urbanisation impacts are screened out.</p> <p>Habitat loss and fragmentation: A review of aerial photography indicates that this allocation is green field immediately adjacent to the developed area of Great Moulton. The closest component of the Broadland SPA and Ramsar is more than 22km to the east of the site. Strategic road, rail infrastructure and numerous field boundaries separate the allocation from these designations restricting bird sight lines and providing a source of disturbance. There is unlikely to be loss of functionally linked / supporting habitat associated with any Habitats site. Likely significant habitat loss and fragmentation impacts have therefore been screened out.</p> <p>This policy is screened in under Category I (recreational disturbance and hydrology).</p>	
4 - Bardford Barford, Marlingford, Colton and Wramplingham	Policy VC BAR1 – Land at Cock Street and Watton Road Barford	20 dwellings	<p>AQ: Given scale of development proposed in the VHCAP, air quality LSEs have been screened out for all policies alone and / or in-combination.</p> <p>Hydrology. This allocation is not located in the River Wensum SAC hydrological catchment but is within the Broads SAC or Broadland Ramsar hydrological catchment (see Appendix A) and therefore nutrient enrichment LSEs are likely and have been screened in. The site is also potentially located in the hydrological catchment for other Habitats sites (Broadland SPA, Breydon Water SPA and Breydon Water Ramsar) and possible issues may include in-combination contaminated surface run off and /or increased demand for water. LSEs alone on hydrology have therefore been screened in.</p> <p>Public access and disturbance: This allocation is located within the North Brecks sites, Broads sites, the Wash sites and the Norfolk Valley Fens sites recreational ZOIs for residential development (see Section 6.5 of main HRA report for more information on recreational ZOIs). As such, in-combination recreational LSEs have been screened in. The site is located more than 400m from any Habitats site and therefore urbanisation impacts are screened out.</p> <p>Habitat loss and fragmentation: A review of aerial photography indicates that this allocation is part developed (used car sales garage) and part a greenfield surrounded by hedgerow with either road infrastructure or residential development on all sides. It is located in the north of the plan area, a</p>	Screened in.

Village Cluster Number and Name	Policy Number and Name	Other relevant information	Pre-Screening for LSE	Pre-Screening Conclusion
			<p>considerable distance from the designated sites, with strategic road infrastructure, existing development and fields between the allocation and the SPA/Ramsar sites. There is unlikely to be loss of functionally linked / supporting habitat associated with any Habitats site. Likely significant habitat loss and fragmentation impacts have therefore been screened out.</p> <p>This policy is screened in under Category I (recreational disturbance and hydrology).</p>	
5 - Barnham Broom, Kimberley, Carleton Forehoe, Runhall and Brandon Parva	Policy VC BB1 – Corner of Norwich Road and Bell Road, Barnham Broom	40 dwellings	<p>AQ: Given scale of development proposed in the VHCAP, air quality LSEs have been screened out for all policies alone and / or in-combination.</p> <p>Hydrology. This allocation is not located in the River Wensum SAC hydrological catchment but is within the Broads SAC or Broadland Ramsar hydrological catchment (see Appendix A) and therefore nutrient enrichment LSEs are likely and have been screened in. The site is also potentially located in the hydrological catchment for other Habitats sites (Broadland SPA, Breydon Water SPA and Breydon Water Ramsar) and possible issues may include in-combination contaminated surface run off and /or increased demand for water. LSEs alone on hydrology have therefore been screened in.</p> <p>Public access and disturbance: This allocation is located within the North Brecks sites, Broads sites, the Wash sites, North Coast and the Norfolk Valley Fens sites recreational ZOIs for residential development (see Section 6.5 of main HRA report for more information on recreational ZOIs). As such, in-combination recreational LSEs have been screened in. The site is located more than 400m from any Habitats site and therefore urbanisation impacts are screened out.</p> <p>Habitat loss and fragmentation: A review of aerial photography indicates that this allocation is a grassed field bordered to the north, west and east by residential development in Banham Broom. It is located in the north of the plan area, a considerable distance from the designated sites, with strategic road infrastructure, existing development and fields between the allocation and the SPA/Ramsar sites. There is unlikely to be loss of functionally linked / supporting habitat associated with any Habitats site. Likely significant habitat loss and fragmentation impacts have therefore been screened out.</p> <p>This policy is screened in under Category I (recreational disturbance and hydrology).</p>	Screened in.
6 - Bawburgh	Policy VC BAW1 - Land to the east of Stocks Hill	35 dwellings	<p>AQ: Given scale of development proposed in the VHCAP, air quality LSEs have been screened out for all policies alone and / or in-combination.</p> <p>Hydrology. This allocation is not located in the River Wensum SAC hydrological catchment but is within the Broads SAC or Broadland Ramsar hydrological catchment (see Appendix A) and therefore</p>	Screened in.

Village Cluster Number and Name	Policy Number and Name	Other relevant information	Pre-Screening for LSE	Pre-Screening Conclusion
			<p>nutrient enrichment LSEs are likely and have been screened in. The site is also potentially located in the hydrological catchment for other Habitats sites (Broadland SPA, Breydon Water SPA and Breydon Water Ramsar) and possible issues may include in-combination contaminated surface run off and /or increased demand for water. LSEs alone on hydrology have therefore been screened in.</p> <p>Public access and disturbance: This allocation is located within the North Brecks sites, Broads sites, the Wash sites, North Coast and the Norfolk Valley Fens sites recreational ZOIs for residential development (see Section 6.5 of main HRA report for more information on recreational ZOIs). As such, in-combination recreational LSEs have been screened in. The site is located more than 400m from any Habitats site and therefore urbanisation impacts are screened out.</p> <p>Habitat loss and fragmentation: A review of aerial photography indicates that this allocation is an agricultural field bordered to the north, west and south by residential development in Bawburgh. It is located in the north of the plan area, a considerable distance from the designated sites, with strategic road infrastructure, existing development and fields between the allocation and the SPA/Ramsar sites. There is unlikely to be loss of functionally linked / supporting habitat associated with any Habitats site. Likely significant habitat loss and fragmentation impacts have therefore been screened out.</p> <p>This policy is screened in under Category I (recreational disturbance and hydrology).</p>	
7 - Bressingham	Policy VC BRE1 - Land east of School Road, Bressingham	40 dwellings	<p>AQ: Given scale of development proposed in the VHCAP, air quality LSEs have been screened out for all policies alone and / or in-combination.</p> <p>Hydrology. This allocation is not located in the River Wensum SAC, Broads SAC or Broadland Ramsar hydrological catchment (see Appendix A) and therefore nutrient enrichment LSEs are unlikely and have been screened out. The site is however located in the hydrological catchment for other Habitats sites (Breydon Water SPA and Breydon Water Ramsar) and possible issues may include in-combination contaminated surface run off and /or increased demand for water. LSEs in-combination on hydrology have therefore been screened in.</p> <p>Public access and disturbance: This allocation is located within the Norfolk Brecks sites and the Norfolk Valley Fens sites recreational ZOIs for residential development (see Section 6.5 of main HRA report for more information on recreational ZOIs). As such, in-combination recreational LSEs have been screened in. The site is located more than 400m from any Habitats site and therefore urbanisation impacts are screened out.</p>	Screened in.

Village Cluster Number and Name	Policy Number and Name	Other relevant information	Pre-Screening for LSE	Pre-Screening Conclusion
			<p>Habitat loss and fragmentation: A review of aerial photography indicates that this allocation is a field immediately adjacent to the developed area of Bressingham. It is located in the north of the plan area, a considerable distance from the Broadland SPA / Ramsar, with strategic road infrastructure, existing development and fields between the allocation and the SPA/Ramsar sites. There is unlikely to be loss of functionally linked / supporting habitat associated with any Habitats site. Likely significant habitat loss and fragmentation impacts have therefore been screened out.</p> <p>This policy is screened in under Category I (recreational disturbance) and Category L (hydrology).</p>	
<p>8 - Brooke, Kirstead and Howe</p>	<p>Policy VC BRO1 - East and West of the B1332, Norwich Road, Brooke</p>	<p>50 dwellings</p>	<p>AQ: Given scale of development proposed in the VCHAP, air quality LSEs have been screened out for all policies alone and / or in-combination.</p> <p>Hydrology. This allocation is not located in the River Wensum SAC, Broads SAC or Broadland Ramsar hydrological catchment (see Appendix A) and therefore nutrient enrichment LSEs are unlikely and have been screened out. The site is however located in the hydrological catchment for other Habitats sites (Breydon Water SPA and Breydon Water Ramsar) and possible issues may include in-combination contaminated surface run off and /or increased demand for water. LSEs in-combination on hydrology have therefore been screened in.</p> <p>Public access and disturbance: This allocation is located within the Broads sites, the Wash sites, East Coast sites and the Norfolk Valley Fens sites recreational ZOIs for residential development (see Section 6.5 of main HRA report for more information on recreational ZOIs). As such, in-combination recreational LSEs have been screened in. The site is located more than 400m from any Habitats site and therefore urbanisation impacts are screened out.</p> <p>Habitat loss and fragmentation: A review of aerial photography indicates that this allocation is comprised of two agricultural fields located either side of Norwich Road immediately adjacent to the developed area of Brooke. It is located in the centre of the plan area, a considerable distance (more than 6km) from the designated sites, with strategic road infrastructure, existing development and fields between the allocation and the SPA/Ramsar sites. There is unlikely to be loss of functionally linked / supporting habitat associated with any Habitats site. Likely significant habitat loss and fragmentation impacts have therefore been screened out.</p> <p>This policy is screened in under Category I (recreational disturbance) and Category L (hydrology).</p>	<p>Screened in.</p>

Village Cluster Number and Name	Policy Number and Name	Other relevant information	Pre-Screening for LSE	Pre-Screening Conclusion
9 - Bunwell	Policy VC BUN1 -Land to the north of Bunwell Street, Bunwell	15 dwellings	<p>AQ: Given scale of development proposed in the VHCAP, air quality LSEs have been screened out for all policies alone and / or in-combination.</p> <p>Hydrology. This allocation is not located in the River Wensum SAC hydrological catchment but is within the Broads SAC or Broadland Ramsar hydrological catchment (see Appendix A) and therefore nutrient enrichment LSEs are likely and have been screened in. The site is also potentially located in the hydrological catchment for other Habitats sites (Broadland SPA, Breydon Water SPA and Breydon Water Ramsar) and possible issues may include in-combination contaminated surface run off and /or increased demand for water. LSEs alone on hydrology have therefore been screened in.</p> <p>Public access and disturbance: This allocation is located within the Norfolk Brecks sites, Broads sites, the Wash sites and the Norfolk Valley Fens sites recreational ZOIs for residential development (see Section 6.5 of main HRA report for more information on recreational ZOIs). As such, in-combination recreational LSEs have been screened in. The site is located more than 400m from any Habitats site and therefore urbanisation impacts are screened out.</p> <p>Habitat loss and fragmentation: A review of aerial photography indicates that this allocation an agricultural field located to the north of Bunwell Street and the developed area of Bunwell. It is located in the west of the plan area, a considerable distance from the designated sites, with strategic road infrastructure, existing development and fields between the allocation and the SPA/Ramsar sites. There is unlikely to be loss of functionally linked / supporting habitat associated with any Habitats site. Likely significant habitat loss and fragmentation impacts have therefore been screened out.</p> <p>This policy is screened in under Category I (recreational disturbance) and Category L (hydrology).</p>	Screened in.

Village Cluster Number and Name	Policy Number and Name	Other relevant information	Pre-Screening for LSE	Pre-Screening Conclusion
9 - Bunwell	Policy VC BUN2 – Land opposite Lilac Farm, Bunwell Street	20 dwellings	<p>AQ: Given scale of development proposed in the VHCAP, air quality LSEs have been screened out for all policies alone and / or in-combination.</p> <p>Hydrology. This allocation is not located in the River Wensum SAC hydrological catchment but is within the Broads SAC or Broadland Ramsar hydrological catchment (see Appendix A) and therefore nutrient enrichment LSEs are likely and have been screened in. The site is also potentially located in the hydrological catchment for other Habitats sites (Broadland SPA, Breydon Water SPA and Breydon Water Ramsar) and possible issues may include in-combination contaminated surface run off and /or increased demand for water. LSEs alone on hydrology have therefore been screened in.</p> <p>Public access and disturbance: This allocation is located within the Norfolk Brecks sites, Broads sites, the Wash sites and the Norfolk Valley Fens sites recreational ZOIs for residential development (see Section 6.5 of main HRA report for more information on recreational ZOIs). As such, in-combination recreational LSEs have been screened in. The site is located more than 400m from any Habitats site and therefore urbanisation impacts are screened out.</p> <p>Habitat loss and fragmentation: A review of aerial photography indicates that this allocation an agricultural field located to the north of Bunwell Street and the developed area of Bunwell. It is located in the west of the plan area, a considerable distance from the designated sites, with strategic road infrastructure, existing development and fields between the allocation and the SPA/Ramsar sites. There is unlikely to be loss of functionally linked / supporting habitat associated with any Habitats site. Likely significant habitat loss and fragmentation impacts have therefore been screened out.</p> <p>This policy is screened in under Category I (recreational disturbance) and Category L (hydrology).</p>	Screened in.
10 - Burston, Shimpling and Gissing	No allocations	n/a	This section of the VCHAP cannot lead to development or other change and is therefore screened out under Category F.	Screened out.
11 - Carleton Rode	Policy VC CAR1 – Land west of Rode Lane	5 dwellings	<p>AQ: Given scale of development proposed in the VHCAP, air quality LSEs have been screened out for all policies alone and / or in-combination.</p> <p>Hydrology. This allocation is not located in the River Wensum SAC hydrological catchment but is within the Broads SAC or Broadland Ramsar hydrological catchment (see Appendix A) and therefore nutrient enrichment LSEs are likely and have been screened in. The site is also potentially located in the hydrological catchment for other Habitats sites (Broadland SPA, Breydon Water SPA and</p>	Screened in.

Village Cluster Number and Name	Policy Number and Name	Other relevant information	Pre-Screening for LSE	Pre-Screening Conclusion
			<p>Breydon Water Ramsar) and possible issues may include in-combination contaminated surface run off and /or increased demand for water. LSEs alone on hydrology have therefore been screened in.</p> <p>Public access and disturbance: This allocation is located within the North Brecks sites, Broads sites, the Wash sites and the Norfolk Valley Fens sites recreational ZOIs for residential development (see Section 6.5 of main HRA report for more information on recreational ZOIs). As such, in-combination recreational LSEs have been screened in. The site is located more than 400m from any Habitats site and therefore urbanisation impacts are screened out.</p> <p>Habitat loss and fragmentation: A review of aerial photography indicates that this allocation comprises the edge of an agricultural field bordered to the north and east by residential development in Carleton Rode. It is located in the west of the plan area, a considerable distance from the designated sites, with strategic road infrastructure, existing development and fields between the allocation and the SPA/Ramsar sites. There is unlikely to be loss of functionally linked / supporting habitat associated with any Habitats site. Likely significant habitat loss and fragmentation impacts have therefore been screened out.</p> <p>This policy is screened in under Category I (recreational disturbance and hydrology).</p>	
12 - Dickleburgh	No allocations	n/a	This section of the VCHAP cannot lead to development or other change and is therefore screened out under Category F.	Screened out.

Village Cluster Number and Name	Policy Number and Name	Other relevant information	Pre-Screening for LSE	Pre-Screening Conclusion
13 - Ditchingham, Broome, Hedenham and Thwaite	Policy VC DIT1 - Land between Thwaite Road and Tunneys Lane	35 dwellings	<p>AQ: Given scale of development proposed in the VHCAP, air quality LSEs have been screened out for all policies alone and / or in-combination.</p> <p>Hydrology. This allocation is not located in the River Wensum SAC, Broads SAC or Broadland Ramsar hydrological catchment (see Appendix A) and therefore nutrient enrichment LSEs are unlikely and have been screened out. The site is however located in the hydrological catchment for other Habitats sites (Breydon Water SPA and Breydon Water Ramsar) and possible issues may include in-combination contaminated surface run off and /or increased demand for water. LSEs in-combination on hydrology have therefore been screened in.</p> <p>Public access and disturbance: This allocation is located within the Broads sites, the Wash sites and East Coast sites recreational ZOIs for residential development (see Section 6.5 of main HRA report for more information on recreational ZOIs). As such, in-combination recreational LSEs have been screened in. The site is located more than 400m from any Habitats site and therefore urbanisation impacts are screened out.</p> <p>Habitat loss and fragmentation: A review of aerial photography indicates that this allocation is comprised of an agricultural field immediately adjacent to the developed area of Ditchingham. It is located in the south of the plan area, approx. 5,000m from the closest component of the designated sites, with strategic road infrastructure (A143), existing development and fields between the allocation and the SPA/Ramsar sites. These are likely to restrict bird sight lines and provide a source of disturbance. There is unlikely to be loss of functionally linked / supporting habitat associated with any Habitats site. Likely significant habitat loss and fragmentation impacts have therefore been screened out.</p> <p>This policy is screened in under Category I (recreational disturbance) and Category L (hydrology).</p>	Screened in.
14 - Earsham	Policy VC EAR1 – Land east of School Road, Earsham	25 dwellings	<p>AQ: Given scale of development proposed in the VHCAP, air quality LSEs have been screened out for all policies alone and / or in-combination.</p> <p>Hydrology. This allocation is not located in the River Wensum SAC, Broads SAC or Broadland Ramsar hydrological catchment (see Appendix A) and therefore nutrient enrichment LSEs are unlikely and have been screened out. The site is however located in the hydrological catchment for other Habitats sites (Breydon Water SPA and Breydon Water Ramsar) and possible issues may include in-combination contaminated surface run off and /or increased demand for water. LSEs in-combination on hydrology have therefore been screened in.</p>	Screened in.

Village Cluster Number and Name	Policy Number and Name	Other relevant information	Pre-Screening for LSE	Pre-Screening Conclusion
			<p>Public access and disturbance: This allocation is located within the Broads sites, the Wash sites and East Coast sites recreational ZOIs for residential development (see Section 6.5 of main HRA report for more information on recreational ZOIs). As such, in-combination recreational LSEs have been screened in. The site is located more than 400m from any Habitats site and therefore urbanisation impacts are screened out.</p> <p>Habitat loss and fragmentation: A review of aerial photography indicates that this allocation is comprised of an agricultural field immediately adjacent to the developed area of Earsham. It is located in the south of the plan area, approx. 7,000m from the closest component of the designated sites, with strategic road infrastructure (A143 and A144), existing development and fields between the allocation and the SPA/Ramsar sites. These are likely to restrict bird sight lines and provide a source of disturbance. There is unlikely to be loss of functionally linked / supporting habitat associated with any Habitats site. Likely significant habitat loss and fragmentation impacts have therefore been screened out.</p> <p>This policy is screened in under Category I (recreational disturbance) and Category L (hydrology).</p>	
15 - Forncett St Mary and Forncett St Peter	No allocation	n/a	This section of the VCHAP cannot lead to development or other change and is therefore screened out under Category F.	Screened out.
16 - Gillingham, Geldeston, and Stockton	Policy VC GIL1 - South of Geldeston Road and Daisy Way, Gillingham	35 dwellings	<p>AQ: Given scale of development proposed in the VHCAP, air quality LSEs have been screened out for all policies alone and / or in-combination.</p> <p>Hydrology. This allocation is not located in the River Wensum SAC, Broads SAC or Broadland Ramsar hydrological catchment (see Appendix A) and therefore nutrient enrichment LSEs are unlikely and have been screened out. The site is however located in the hydrological catchment for other Habitats sites (such as Broadland SPA and Ramsar, Breydon Water SPA and Breydon Water Ramsar) and possible issues may include in-combination contaminated surface run off and /or increased demand for water. LSEs in-combination on hydrology have therefore been screened in.</p> <p>Public access and disturbance: This allocation is located within the Broads sites, the Wash sites and East Coast sites recreational ZOIs for residential development (see Section 6.5 of main HRA report for more information on recreational ZOIs). As such, in-combination recreational LSEs have been screened in. The site is located more than 400m from any Habitats site and therefore urbanisation impacts are screened out.</p>	Screened in.

Village Cluster Number and Name	Policy Number and Name	Other relevant information	Pre-Screening for LSE	Pre-Screening Conclusion
			<p>Habitat loss and fragmentation: A review of aerial photography indicates that this allocation is comprised of an arable field immediately adjacent to the developed area of Gillingham. This allocation is located approximately 660m to the east of the closest component of the Broadland SPA and Ramsar. Aerial photography indicates a mature hedgerow binds the western border of the site, which is likely to restrict bird sight lines. In addition, there are a number of other fields with hedgerows and minor roads between this allocation and the designated sites. There is unlikely to be loss of functionally linked / supporting habitat associated with any Habitats site. Likely significant habitat loss and fragmentation impacts have therefore been screened out.</p> <p>This policy is screened in under Category I (recreational disturbance) and Category L (hydrology).</p>	
<p>16 - Gillingham, Geldeston, and Stockton</p>	<p>Policy VC GEL1 – North of Kell’s Way, Geldeston</p>	<p>20 dwellings</p>	<p>AQ: Given scale of development proposed in the VHCAP, air quality LSEs have been screened out for all policies alone and / or in-combination.</p> <p>Hydrology. This allocation is not located in the River Wensum SAC, Broads SAC or Broadland Ramsar hydrological catchment (see Appendix A) and therefore nutrient enrichment LSEs are unlikely and have been screened out. The site is however located in the hydrological catchment for other Habitats sites (such as Broadland SPA and Ramsar, Breydon Water SPA and Breydon Water Ramsar) and possible issues may include in-combination contaminated surface run off and /or increased demand for water. LSEs in-combination on hydrology have therefore been screened in.</p> <p>Public access and disturbance: This allocation is located within the Broads sites, the Wash sites and East Coast sites recreational ZOIs for residential development (see Section 6.5 of main HRA report for more information on recreational ZOIs). As such, in-combination recreational LSEs have been screened in. There are public rights of way linking this allocation to the closest component of the Broadlands SPA and Broadland Ramsar site (which is 735m to its south). As such alone recreational impacts are also likely. The site is located more than 400m from any Habitats site and therefore urbanisation impacts are screened out.</p> <p>Habitat loss and fragmentation: A review of aerial photography indicates that this allocation is comprised of a green field with hedgerow boundary immediately adjacent to the developed area of Geldeston. This allocation is located approx. 730m to the north west of the closest component of the Broadland SPA / Ramsar. The village of Geldeston sites between the allocation and the designated sites and is likely to restrict bird sight lines and provide a source of disturbance. There is unlikely to be loss of functionally linked / supporting habitat associated with any Habitats site. Likely significant habitat loss and fragmentation impacts have therefore been screened out.</p>	<p>Screened in.</p>

Village Cluster Number and Name	Policy Number and Name	Other relevant information	Pre-Screening for LSE	Pre-Screening Conclusion
			This policy is screened in under Category I (recreational disturbance) and Category L (hydrology).	
17 - Hales and Heckingham, Langley with Hardley, Carleton St Peter, Claxton, Raveningham and Sisland	Policy VC HAL1 - Land off Briar Lane, Hales	35 dwellings	<p>AQ: Given scale of development proposed in the VHCAP, air quality LSEs have been screened out for all policies alone and / or in-combination.</p> <p>Hydrology. This allocation is not located in the River Wensum SAC, Broads SAC or Broadland Ramsar hydrological catchment (see Appendix A) and therefore nutrient enrichment LSEs are unlikely and have been screened out. The site is however located in the hydrological catchment for other Habitats sites (such as Broadland SPA and Ramsar, Breydon Water SPA and Breydon Water Ramsar) and possible issues may include in-combination contaminated surface run off and /or increased demand for water. LSEs in-combination on hydrology have therefore been screened in.</p> <p>Public access and disturbance: This allocation is located within the Broads sites, the Wash sites and East Coast sites recreational ZOIs for residential development (see Section 6.5 of main HRA report for more information on recreational ZOIs). As such, in-combination recreational LSEs have been screened in. The site is located more than 400m from any Habitats site and therefore urbanisation impacts are screened out.</p> <p>Habitat loss and fragmentation: A review of aerial photography indicates that this allocation is comprised of a green field with hedgerow boundary immediately adjacent to the developed area of Hales. This allocation lies approximately 1900m to the south of the closest components of the Broadland SPA and Ramsar designations. The settlement of Hales is likely to provide a source of disturbance, there is also a power line and a large number of field boundaries located in between the designated sites and this allocation which are likely to restrict bird slight lines. There is unlikely to be loss of functionally linked / supporting habitat associated with any Habitats site. Likely significant habitat loss and fragmentation impacts have therefore been screened out.</p> <p>This policy is screened in under Category I (recreational disturbance) and Category L (hydrology).</p>	Screened in.
17 - Hales and Heckingham, Langley with Hardley, Carleton St Peter, Claxton,	Policy VC HA2 – Land at Yarmouth Road west of Hales Hospital	23 dwellings	<p>AQ: Given scale of development proposed in the VHCAP, air quality LSEs have been screened out for all policies alone and / or in-combination.</p> <p>Hydrology. This allocation is not located in the River Wensum SAC, Broads SAC or Broadland Ramsar hydrological catchment (see Appendix A) and therefore nutrient enrichment LSEs are unlikely and have been screened out. The site is however located in the hydrological catchment for other Habitats sites (such as Broadland SPA and Ramsar, Breydon Water SPA and Breydon Water</p>	Screened in.

Village Cluster Number and Name	Policy Number and Name	Other relevant information	Pre-Screening for LSE	Pre-Screening Conclusion
Raveningham and Sisland			<p>Ramsar) and possible issues may include in-combination contaminated surface run off and /or increased demand for water. LSEs in-combination on hydrology have therefore been screened in.</p> <p>Public access and disturbance: This allocation is located within the Broads sites, the East Coast and the Wash sites recreational ZOIs for residential development (see Section 6.5 of main HRA report for more information on recreational ZOIs). As such, in-combination recreational LSEs have been screened in. The site is located more than 400m from any Habitats site and therefore urbanisation impacts are screened out.</p> <p>Habitat loss and fragmentation: A review of aerial photography indicates that this allocation is comprised of a green field with hedgerow boundary immediately adjacent to the developed area of Hales. This allocation lies approximately 2000m to the south of the closest components of the Broadland SPA and Ramsar designations. The settlement of Hales is likely to provide a source of disturbance, there is also a power line and a large number of field boundaries located in between the designated sites and this allocation which are likely to restrict bird slight lines. There is unlikely to be loss of functionally linked / supporting habitat associated with any Habitats site. Likely significant habitat loss and fragmentation impacts have therefore been screened out.</p> <p>This policy is screened in under Category I (recreational disturbance) and Category L (hydrology).</p>	
18 - Hempnall, Topcroft Street, Morningthorpe, Fritton, Shelton and Hardwick	Policy VC HEM1 - Land at Millfields, Hempnall	15 dwellings	<p>AQ: Given scale of development proposed in the VHCAP, air quality LSEs have been screened out for all policies alone and / or in-combination.</p> <p>Hydrology. This allocation is not located in the River Wensum SAC hydrological catchment but is within the Broads SAC or Broadland Ramsar hydrological catchment (see Appendix A) and therefore nutrient enrichment LSEs are likely and have been screened in. The site is also potentially located in the hydrological catchment for other Habitats sites (Broadland SPA, Breydon Water SPA and Breydon Water Ramsar) and possible issues may include in-combination contaminated surface run off and /or increased demand for water. LSEs alone on hydrology have therefore been screened in.</p> <p>Public access and disturbance: This allocation is located within the Broads sites, the Wash sites and the Norfolk Valley Fens sites recreational ZOIs for residential development (see Section 6.5 of main HRA report for more information on recreational ZOIs). As such, in-combination recreational LSEs have been screened in. The site is located more than 400m from any Habitats site and therefore urbanisation impacts are screened out.</p> <p>Habitat loss and fragmentation: A review of aerial photography indicates that this allocation is an agricultural field bordered to the north by allotments and to the east by residential development in</p>	Screened in.

Village Cluster Number and Name	Policy Number and Name	Other relevant information	Pre-Screening for LSE	Pre-Screening Conclusion
			Hempnall with an access road in the eastern section of the site. The allocation is located in the centre of the plan area a considerable distance from the closest component of the Broadlands SPA and Broadlands Ramsar. There is a large amount of road infrastructure, agricultural fields and associated hedgerows and existing development between the allocation and designated sites. There is unlikely to be loss of functionally linked / supporting habitat associated with any Habitats site. Likely significant habitat loss and fragmentation impacts have therefore been screened out. This policy is screened in under Category I (recreational disturbance and hydrology).	
19 - Heywood	No allocations	n/a	This section of the VCHAP cannot lead to development or other change and is therefore screened out under Category F.	Screened out.
20 - Keswick and Intwood	No allocations	n/a	This section of the VCHAP cannot lead to development or other change and is therefore screened out under Category F.	Screened out.
21 - Kettingham	No allocations	n/a	This section of the VCHAP cannot lead to development or other change and is therefore screened out under Category F.	Screened out.
22 - Kirby Cane and Ellingham	Policy VC ELL1 – South of Mill Road Ellingham	25 dwellings	<p>AQ: Given scale of development proposed in the VCHAP, air quality LSEs have been screened out for all policies alone and / or in-combination.</p> <p>Hydrology. This allocation is not located in the River Wensum SAC, Broads SAC or Broadland Ramsar hydrological catchment (see Appendix A) and therefore nutrient enrichment LSEs are unlikely and have been screened out. The site is however located in the hydrological catchment for other Habitats sites (Breydon Water SPA and Breydon Water Ramsar) and possible issues may include in-combination contaminated surface run off and /or increased demand for water. LSEs in-combination on hydrology have therefore been screened in.</p> <p>Public access and disturbance: This allocation is located within the Broads sites, the Wash sites and East Coast sites recreational ZOIs for residential development (see Section 6.5 of main HRA report for more information on recreational ZOIs). As such, in-combination recreational LSEs have been screened in. The site is located more than 400m from any Habitats site and therefore urbanisation impacts are screened out.</p> <p>Habitat loss and fragmentation: A review of aerial photography indicates that this allocation is comprised of a field immediately adjacent to the developed area of Ellingham which is likely to provide a source of disturbance. This allocation is located approx. 2,500m to the west of the closest component of the Broadland SPA and Broadland Ramsar. Given this distance there are a number of</p>	Screened in.

Village Cluster Number and Name	Policy Number and Name	Other relevant information	Pre-Screening for LSE	Pre-Screening Conclusion
			<p>fields and associated field boundaries between the allocation and designated sites which are likely to restrict bird sight lines. There is unlikely to be loss of functionally linked / supporting habitat associated with any Habitats site. Likely significant habitat loss and fragmentation impacts have therefore been screened out.</p> <p>This policy is screened in under Category I (recreational disturbance) and Category L (hydrology).</p>	
22 - Kirby Cane and Ellingham	Policy VC ELL2 - Land at Florence Way, Ellingham	12 dwellings	<p>AQ: Given scale of development proposed in the VHCAP, air quality LSEs have been screened out for all policies alone and / or in-combination.</p> <p>Hydrology. This allocation is not located in the River Wensum SAC, Broads SAC or Broadland Ramsar hydrological catchment (see Appendix A) and therefore nutrient enrichment LSEs are unlikely and have been screened out. The site is however located in the hydrological catchment for other Habitats sites (Breydon Water SPA and Breydon Water Ramsar) and possible issues may include in-combination contaminated surface run off and /or increased demand for water. LSEs in-combination on hydrology have therefore been screened in.</p> <p>Public access and disturbance: This allocation is located within the Broads sites, the Wash sites and East Coast sites recreational ZOIs for residential development (see Section 6.5 of main HRA report for more information on recreational ZOIs). As such, in-combination recreational LSEs have been screened in. The site is located more than 400m from any Habitats site and therefore urbanisation impacts are screened out.</p> <p>Habitat loss and fragmentation: A review of aerial photography indicates that this allocation is comprised of a field immediately adjacent to the developed area of Ellingham which is likely to provide a source of disturbance. This allocation is located approx. 2,500m to the west of the closest component of the Broadland SPA and Broadland Ramsar. Given this distance there are a number of fields and associated field boundaries between the allocation and designated sites which are likely to restrict bird sight lines. . There is unlikely to be loss of functionally linked / supporting habitat associated with any Habitats site. Likely significant habitat loss and fragmentation impacts have therefore been screened out.</p> <p>This policy is screened in under Category I (recreational disturbance) and Category L (hydrology).</p>	Screened in.

Village Cluster Number and Name	Policy Number and Name	Other relevant information	Pre-Screening for LSE	Pre-Screening Conclusion
23 - Little Melton and Great Melton	Policy VC LM1 - South of School Lane and East of Burnthouse Lane, Little Melton	35 dwellings	<p>AQ: Given scale of development proposed in the VHCAP, air quality LSEs have been screened out for all policies alone and / or in-combination.</p> <p>Hydrology. This allocation is not located in the River Wensum SAC hydrological catchment but is within the Broads SAC or Broadland Ramsar hydrological catchment (see Appendix A) and therefore nutrient enrichment LSEs are likely and have been screened in. The site is also potentially located in the hydrological catchment for other Habitats sites (Broadland SPA, Breydon Water SPA and Breydon Water Ramsar) and possible issues may include in-combination contaminated surface run off and /or increased demand for water. LSEs alone on hydrology have therefore been screened in.</p> <p>Public access and disturbance: This allocation is located within the Norfolk Brecks sites, Broads sites, the Wash sites, North Coast sites and the Norfolk Valley Fens sites recreational ZOIs for residential development (see Section 6.5 of main HRA report for more information on recreational ZOIs). As such, in-combination recreational LSEs have been screened in. The site is located more than 400m from any Habitats site and therefore urbanisation impacts are screened out.</p> <p>Habitat loss and fragmentation: A review of aerial photography indicates that this allocation is grassed fields surrounded by residential development in Little Melton. This allocation is located in the north west of the plan area and a considerable distance from the closest component of the Broadland SPA and Ramsar. There is a large amount of road infrastructure and existing development between the allocation and designated sites which provides a source of disturbance and limits bird sight lines. There is unlikely to be loss of functionally linked / supporting habitat associated with any Habitats site. Likely significant habitat loss and fragmentation impacts have therefore been screened out.</p> <p>This policy is screened in under Category I (recreational disturbance and hydrology).</p>	Screened in.
24 - Morley and Deopham	No allocations	n/a	This section of the VCHAP cannot lead to development or other change and is therefore screened out under Category F.	Screened out.
25 - Mulbarton, Bracon Ash, Swardston and East Carleton	Policy – VC MUL1 – Land east of Bluebell Road and north of	35 dwellings	<p>AQ: Given scale of development proposed in the VHCAP, air quality LSEs have been screened out for all policies alone and / or in-combination.</p> <p>Hydrology. This allocation is not located in the River Wensum SAC hydrological catchment but is within the Broads SAC or Broadland Ramsar hydrological catchment (see Appendix A) and therefore nutrient enrichment LSEs are likely and have been screened in. The site is also potentially located in the hydrological catchment for other Habitats sites (Broadland SPA, Breydon Water SPA and</p>	Screened in.

Village Cluster Number and Name	Policy Number and Name	Other relevant information	Pre-Screening for LSE	Pre-Screening Conclusion
	The Rosery Mulbarton		<p>Breydon Water Ramsar) and possible issues may include in-combination contaminated surface run off and /or increased demand for water. LSEs alone on hydrology have therefore been screened in.</p> <p>Public access and disturbance: This allocation is located within the Norfolk Brecks sites, Broads sites, the Wash sites and the Norfolk Valley Fens sites recreational ZOIs for residential development (see Section 6.5 of main HRA report for more information on recreational ZOIs). As such, in-combination recreational LSEs have been screened in. The site is located more than 400m from any Habitats site and therefore urbanisation impacts are screened out.</p> <p>Habitat loss and fragmentation: A review of aerial photography indicates that this allocation is an agricultural field immediately adjacent to the developed area of Mulbarton. This allocation is located in the centre of the plan area and a considerable distance from the closet component of the Broadland SPA and Ramsar. There is a large amount of road infrastructure and existing development between the allocation and designated sites which provides a source of disturbance and limits bird sight lines. There is unlikely to be loss of functionally linked / supporting habitat associated with any Habitats site. Likely significant habitat loss and fragmentation impacts have therefore been screened out.</p> <p>This policy is screened in under Category I (recreational disturbance and hydrology).</p>	
25 - Mulbarton, Bracon Ash, Swardeston and East Carleton	Policy VC SWA1 - Land off Bobbins Way, Swardeston	20 dwellings	<p>AQ: Given scale of development proposed in the VHCAP, air quality LSEs have been screened out for all policies alone and / or in-combination.</p> <p>Hydrology. This allocation is not located in the River Wensum SAC hydrological catchment but is within the Broads SAC or Broadland Ramsar hydrological catchment (see Appendix A) and therefore nutrient enrichment LSEs are likely and have been screened in. The site is also potentially located in the hydrological catchment for other Habitats sites (Broadland SPA, Breydon Water SPA and Breydon Water Ramsar) and possible issues may include in-combination contaminated surface run off and /or increased demand for water. LSEs alone on hydrology have therefore been screened in.</p> <p>Public access and disturbance: This allocation is located within the Broads sites, the Wash sites and the Norfolk Valley Fens sites recreational ZOIs for residential development (see Section 6.5 of main HRA report for more information on recreational ZOIs). As such, in-combination recreational LSEs have been screened in. The site is located more than 400m from any Habitats site and therefore urbanisation impacts are screened out.</p> <p>Habitat loss and fragmentation: A review of aerial photography indicates that this allocation is a garden nursery immediately adjacent to the developed area of Swardeston. This allocation is</p>	Screened in.

Village Cluster Number and Name	Policy Number and Name	Other relevant information	Pre-Screening for LSE	Pre-Screening Conclusion
			located in the centre of the plan area and a considerable distance from the closet component of the Broadland SPA and Ramsar. There is a large amount of road infrastructure and existing development between the allocation and designated sites which provides a source of disturbance and limits bird sight lines. There is unlikely to be loss of functionally linked / supporting habitat associated with any Habitats site. Likely significant habitat loss and fragmentation impacts have therefore been screened out. This policy is screened in under Category I (recreational disturbance and hydrology).	
25 - Mulbarton, Bracon Ash, Swardeston and East Carleton	Policy VC SWA2 – Land on Main Road	30 dwellings	AQ: Given scale of development proposed in the VHCAP, air quality LSEs have been screened out for all policies alone and / or in-combination. Hydrology. This allocation is not located in the River Wensum SAC hydrological catchment but is within the Broads SAC or Broadland Ramsar hydrological catchment (see Appendix A) and therefore nutrient enrichment LSEs are likely and have been screened in. The site is also potentially located in the hydrological catchment for other Habitats sites (Broadland SPA, Breydon Water SPA and Breydon Water Ramsar) and possible issues may include in-combination contaminated surface run off and /or increased demand for water. LSEs alone on hydrology have therefore been screened in. Public access and disturbance: This allocation is located within the Broads sites, the Wash sites and the Norfolk Valley Fens sites recreational ZOIs for residential development (see Section 6.5 of main HRA report for more information on recreational ZOIs). As such, in-combination recreational LSEs have been screened in. The site is located more than 400m from any Habitats site and therefore urbanisation impacts are screened out. Habitat loss and fragmentation: A review of aerial photography indicates that this allocation is a agricultural land adjacent to the developed area of Swardeston. This allocation is located in the centre of the plan area and a considerable distance from the closet component of the Broadland SPA and Ramsar. There is a large amount of road infrastructure and existing development between the allocation and designated sites which provides a source of disturbance and limits bird sight lines. There is unlikely to be loss of functionally linked / supporting habitat associated with any Habitats site. Likely significant habitat loss and fragmentation impacts have therefore been screened out. This policy is screened in under Category I (recreational disturbance and hydrology).	Screened in.
25 - Mulbarton, Bracon Ash,	Policy BRA1 - Land at Norwich	23 dwellings	AQ: Given scale of development proposed in the VHCAP, air quality LSEs have been screened out for all policies alone and / or in-combination.	Screened in.

Village Cluster Number and Name	Policy Number and Name	Other relevant information	Pre-Screening for LSE	Pre-Screening Conclusion
Swardeston and East Carleton	Road, Bracon Ash		<p>Hydrology. This allocation is not located in the River Wensum SAC hydrological catchment but is within the Broads SAC or Broadland Ramsar hydrological catchment (see Appendix A) and therefore nutrient enrichment LSEs are likely and have been screened in. The site is also potentially located in the hydrological catchment for other Habitats sites (Broadland SPA, Breydon Water SPA and Breydon Water Ramsar) and possible issues may include in-combination contaminated surface run off and /or increased demand for water. LSEs alone on hydrology have therefore been screened in.</p> <p>Public access and disturbance: This allocation is located within the Brecks sites, the Broads sites, the Wash sites and the Norfolk Valley Fens sites recreational ZOIs for residential development (see Section 6.5 of main HRA report for more information on recreational ZOIs). As such, in-combination recreational LSEs have been screened in. The site is located more than 400m from any Habitats site and therefore urbanisation impacts are screened out.</p> <p>Habitat loss and fragmentation: A review of aerial photography indicates that this allocation is a agricultural field immediately adjacent to the developed area of Brecon Ash. This allocation is located in the centre of the plan area and a considerable distance from the closet component of the Broadland SPA and Ramsar. There is a large amount of road infrastructure and existing development between the allocation and designated sites which provides a source of disturbance and limits bird sight lines. There is unlikely to be loss of functionally linked / supporting habitat associated with any Habitats site. Likely significant habitat loss and fragmentation impacts have therefore been screened out.</p> <p>This policy is screened in under Category I (recreational disturbance and hydrology).</p>	

Village Cluster Number and Name	Policy Number and Name	Other relevant information	Pre-Screening for LSE	Pre-Screening Conclusion
26 - Needham, Brockdish, Starston and Wortwel	Policy VC NEE1 - Land north of High Road and east of Harmans Lane	15 dwellings	<p>AQ: Given scale of development proposed in the VHCAP, air quality LSEs have been screened out for all policies alone and / or in-combination.</p> <p>Hydrology. This allocation is not located in the River Wensum SAC, Broads SAC or Broadland Ramsar hydrological catchment (see Appendix A) and therefore nutrient enrichment LSEs are unlikely and have been screened out. The site is however located in the hydrological catchment for other Habitats sites (Breydon Water SPA and Breydon Water Ramsar) and possible issues may include in-combination contaminated surface run off and /or increased demand for water. LSEs in-combination on hydrology have therefore been screened in.</p> <p>Public access and disturbance: This allocation is located within the Norfolk Brecks sites and the Broads sites recreational ZOIs for residential development (see Section 6.5 of main HRA report for more information on recreational ZOIs). As such, in-combination recreational LSEs have been screened in. The site is located more than 400m from any Habitats site and therefore urbanisation impacts are screened out.</p> <p>Habitat loss and fragmentation: A review of aerial photography indicates that this allocation is comprised of an agricultural field immediately to the north of Needham. This allocation is located to the south of the plan area and a considerable distance from the closest component of the Broadland SPA and Ramsar. There is a large amount of road infrastructure and existing development between the allocation and designated sites which provides a source of disturbance and limits bird sight lines. There is unlikely to be loss of functionally linked / supporting habitat associated with any Habitats site. Likely significant habitat loss and fragmentation impacts have therefore been screened out. This policy is screened in under Category I (recreational disturbance) and Category L (hydrology).</p>	Screened in.

Village Cluster Number and Name	Policy Number and Name	Other relevant information	Pre-Screening for LSE	Pre-Screening Conclusion
26 - Needham, Brockdish, Starston and Wortwel	Policy VC WOR1 – North and south of High Road, Wortell	12 dwellings	<p>AQ: Given scale of development proposed in the VHCAP, air quality LSEs have been screened out for all policies alone and / or in-combination.</p> <p>Hydrology. This allocation is not located in the River Wensum SAC, Broads SAC or Broadland Ramsar hydrological catchment (see Appendix A) and therefore nutrient enrichment LSEs are unlikely and have been screened out. The site is however located in the hydrological catchment for other Habitats sites (Breydon Water SPA and Breydon Water Ramsar) and possible issues may include in-combination contaminated surface run off and /or increased demand for water. LSEs in-combination on hydrology have therefore been screened in.</p> <p>Public access and disturbance: This allocation is located within the Broads sites recreational ZOIs for residential development (see Section 6.5 of main HRA report for more information on recreational ZOIs). As such, in-combination recreational LSEs have been screened in. The site is located more than 400m from any Habitats site and therefore urbanisation impacts are screened out.</p> <p>Habitat loss and fragmentation: This allocation is split across two sites on either side of High Road. A review of aerial photography indicates the northern site comprises part of an agricultural field immediately adjacent to Wortell. The southern section of the allocation comprises a previously developed site. This allocation is located to the south of the plan area and a considerable distance from the closet component of the Broadland SPA and Ramsar. There is a large amount of road infrastructure and existing development between the allocation and designated sites which provides a source of disturbance and limits bird sight lines. There is unlikely to be loss of functionally linked / supporting habitat associated with any Habitats site. Likely significant habitat loss and fragmentation impacts have therefore been screened out.</p> <p>This policy is screened in under Category I (recreational disturbance) and Category L (hydrology).</p>	Screened in.

Village Cluster Number and Name	Policy Number and Name	Other relevant information	Pre-Screening for LSE	Pre-Screening Conclusion
26 - Needham, Brockdish, Starston and Wortwel	Policy VC WOR2 – Land at the junction of High Road and Low Road	5 dwellings	<p>AQ: Given scale of development proposed in the VHCAP, air quality LSEs have been screened out for all policies alone and / or in-combination.</p> <p>Hydrology. This allocation is not located in the River Wensum SAC, Broads SAC or Broadland Ramsar hydrological catchment (see Appendix A) and therefore nutrient enrichment LSEs are unlikely and have been screened out. The site is however located in the hydrological catchment for other Habitats sites (Breydon Water SPA and Breydon Water Ramsar) and possible issues may include in-combination contaminated surface run off and /or increased demand for water. LSEs in-combination on hydrology have therefore been screened in.</p> <p>Public access and disturbance: This allocation is located within the Broads sites recreational ZOIs for residential development (see Section 6.5 of main HRA report for more information on recreational ZOIs). As such, in-combination recreational LSEs have been screened in. The site is located more than 400m from any Habitats site and therefore urbanisation impacts are screened out.</p> <p>Habitat loss and fragmentation: A review of aerial photography indicates that this allocation is comprised of a grassed field immediately to the north of Wortell with mature boundaries. This allocation is located to the south of the plan area and a considerable distance from the closet component of the Broadland SPA and Ramsar. There is a large amount of road infrastructure and existing development between the allocation and designated sites which provides a source of disturbance and limits bird sight lines. There is unlikely to be loss of functionally linked / supporting habitat associated with any Habitats site. Likely significant habitat loss and fragmentation impacts have therefore been screened out.</p> <p>This policy is screened in under Category I (recreational disturbance) and Category L (hydrology).</p>	Screened in.
27 - Newton Flotman and Swainsthorpe	Policy VC NEW1 - Land off Alan Avenue, Newton Flotman	25 dwellings	<p>AQ: Given scale of development proposed in the VHCAP, air quality LSEs have been screened out for all policies alone and / or in-combination.</p> <p>Hydrology. This allocation is not located in the River Wensum SAC hydrological catchment but is within the Broads SAC or Broadland Ramsar hydrological catchment (see Appendix A) and therefore nutrient enrichment LSEs are likely and have been screened in. The site is also potentially located in the hydrological catchment for other Habitats sites (Broadland SPA, Breydon Water SPA and Breydon Water Ramsar) and possible issues may include in-combination contaminated surface run off and /or increased demand for water. LSEs alone on hydrology have therefore been screened in.</p>	Screened in.

Village Cluster Number and Name	Policy Number and Name	Other relevant information	Pre-Screening for LSE	Pre-Screening Conclusion
			<p>Public access and disturbance: This allocation is located within the North Brecks sites, Broads sites, the Wash sites and the Norfolk Valley Fens sites recreational ZOIs for residential development (see Section 6.5 of main HRA report for more information on recreational ZOIs). As such, in-combination recreational LSEs have been screened in. The site is located more than 400m from any Habitats site and therefore urbanisation impacts are screened out.</p> <p>Habitat loss and fragmentation: A review of aerial photography indicates that this allocation is an agricultural field immediately adjacent to the developed area of Newton Flotman. This allocation is located in the centre of the plan area and a considerable distance from the closet component of the Broadland SPA and Ramsar. There is a large amount of road infrastructure and existing development between the allocation and designated sites which provides a source of disturbance and limits bird sight lines. There is unlikely to be loss of functionally linked / supporting habitat associated with any Habitats site. Likely significant habitat loss and fragmentation impacts have therefore been screened out.</p> <p>This policy is screened in under Category I (recreational disturbance and hydrology).</p>	
27 - Newton Flotman and Swainsthorpe	Policy VC NEW2 – Land adjacent to Alan Avenue	31 dwellings	<p>AQ: Given scale of development proposed in the VHCAP, air quality LSEs have been screened out for all policies alone and / or in-combination.</p> <p>Hydrology. This allocation is not located in the River Wensum SAC hydrological catchment but is within the Broads SAC or Broadland Ramsar hydrological catchment (see Appendix A) and therefore nutrient enrichment LSEs are likely and have been screened in. The site is also potentially located in the hydrological catchment for other Habitats sites (Broadland SPA, Breydon Water SPA and Breydon Water Ramsar) and possible issues may include in-combination contaminated surface run off and /or increased demand for water. LSEs alone on hydrology have therefore been screened in.</p> <p>Public access and disturbance: This allocation is located within the North Brecks sites, Broads sites, the Wash sites and the Norfolk Valley Fens sites recreational ZOIs for residential development (see Section 6.5 of main HRA report for more information on recreational ZOIs). As such, in-combination recreational LSEs have been screened in. The site is located more than 400m from any Habitats site and therefore urbanisation impacts are screened out.</p> <p>Habitat loss and fragmentation: A review of aerial photography indicates that this allocation is green field immediately adjacent to the developed area of Newton Flotman. This allocation is located in the centre of the plan area and a considerable distance from the closet component of the Broadland SPA and Ramsar. There is a large amount of road infrastructure and existing development between</p>	Screened in.

Village Cluster Number and Name	Policy Number and Name	Other relevant information	Pre-Screening for LSE	Pre-Screening Conclusion
			<p>the allocation and designated sites which provides a source of disturbance and limits bird sight lines. There is unlikely to be loss of functionally linked / supporting habitat associated with any Habitats site. Likely significant habitat loss and fragmentation impacts have therefore been screened out.</p> <p>This policy is screened in under Category I (recreational disturbance and hydrology).</p>	
28 - Pulham Market and Pulham St Mary	Policy VC PSM1 - Land north of Norwich Road and west of Poppy's Lane	50 dwellings	<p>AQ: Given scale of development proposed in the VHCAP, air quality LSEs have been screened out for all policies alone and / or in-combination.</p> <p>Hydrology. This allocation is not located in the River Wensum SAC, Broads SAC or Broadland Ramsar hydrological catchment (see Appendix A) and therefore nutrient enrichment LSEs are unlikely and have been screened out. The site is however located in the hydrological catchment for other Habitats sites (Breydon Water SPA and Breydon Water Ramsar) and possible issues may include in-combination contaminated surface run off and /or increased demand for water. LSEs in-combination on hydrology have therefore been screened in.</p> <p>Public access and disturbance: This allocation is located within the Norfolk Brecks sites, Broads sites, the Wash sites and Norfolk Valley Fens sites recreational ZOIs for residential development (see Section 6.5 of main HRA report for more information on recreational ZOIs). As such, in-combination recreational LSEs have been screened in. The site is located more than 400m from any Habitats site and therefore urbanisation impacts are screened out.</p> <p>Habitat loss and fragmentation: A review of aerial photography indicates that this allocation is comprised of an arable field immediately adjacent to the developed area of Pulham St Mary. This allocation is located to the south of the plan area and a considerable distance from the closet component of the Broadland SPA and Ramsar. There is a large amount of road infrastructure and existing development between the allocation and designated sites which provides a source of disturbance and limits bird sight lines. There is unlikely to be loss of functionally linked / supporting habitat associated with any Habitats site. Likely significant habitat loss and fragmentation impacts have therefore been screened out.</p> <p>This policy is screened in under Category I (recreational disturbance) and Category L (hydrology).</p>	Screened in.
29 - Rockland St Mary, Hellington and Holverston	Policy VC ROC1 - Land south of New Inn Hill,	25 dwellings	<p>AQ: Given scale of development proposed in the VHCAP, air quality LSE have been screened out for all policies alone and / or in-combination.</p> <p>Hydrology. This allocation is not located in the River Wensum SAC, Broads SAC or Broadland Ramsar hydrological catchment (see Appendix A) and therefore nutrient enrichment LSEs are</p>	Screened in.

Village Cluster Number and Name	Policy Number and Name	Other relevant information	Pre-Screening for LSE	Pre-Screening Conclusion
	Rockland St Mary		<p>unlikely and have been screened out. The site is however located in the hydrological catchment for other Habitats sites (Breydon Water SPA and Breydon Water Ramsar) and possible issues may include in-combination contaminated surface run off and /or increased demand for water. LSEs in-combination on hydrology have therefore been screened in.</p> <p>Public access and disturbance: This allocation is located within the Broads sites, the Wash sites and East Coast sites recreational ZOIs for residential development (see Section 6.5 of main HRA report for more information on recreational ZOIs). As such, in-combination recreational LSEs have been screened in. There are public rights of way linking this allocation to the closest component of the Broadlands SPA and Ramsar site (which is 451m to its north). As such alone recreational impacts are also likely. The site is located more than 400m from any Habitats site and therefore urbanisation impacts are screened out.</p> <p>Habitat loss and fragmentation: A review of aerial photography indicates that this allocation is comprised of an arable field immediately adjacent to the developed area of Rockland St Mary. This allocation is located approximately 450m to the west of the closest component of the Broadland SPA and Broadland Ramsar. The aerial photography indicates that there are a number of woodland components between the allocation and designated sites. In addition, the surrounding urban development is likely to provide a source of noise disturbance. There is unlikely to be loss of functionally linked / supporting habitat associated with any Habitats site. Likely significant habitat loss and fragmentation impacts have therefore been screened out.</p> <p>This policy is screened in under Category J (recreational disturbance) and Category L (hydrology).</p>	
29 - Rockland St Mary, Hellington and Holverston	Policy VC ROC2 Land south of The Street, Rockland St Mary	25 dwellings	<p>AQ: Given scale of development proposed in the VHCAP, air quality LSEs have been screened out for all policies alone and / or in-combination.</p> <p>Hydrology. This allocation is not located in the River Wensum SAC, Broads SAC or Broadland Ramsar hydrological catchment (see Appendix A) and therefore nutrient enrichment LSEs are unlikely and have been screened out. The site is however located in the hydrological catchment for other Habitats sites (Breydon Water SPA and Breydon Water Ramsar) and possible issues may include in-combination contaminated surface run off and /or increased demand for water. LSEs in-combination on hydrology have therefore been screened in.</p> <p>Public access and disturbance: This allocation is located within the Broads sites, the Wash sites, East Coast sites and Norfolk Fens sites recreational ZOIs for residential development (see Section 6.5 of main HRA report for more information on recreational ZOIs). As such, in-combination</p>	Screened in.

Village Cluster Number and Name	Policy Number and Name	Other relevant information	Pre-Screening for LSE	Pre-Screening Conclusion
			<p>recreational LSEs have been screened in. The site is located more than 400m from any Habitats site and therefore urbanisation impacts are screened out.</p> <p>Habitat loss and fragmentation: A review of aerial photography indicates that this allocation is comprised of an arable field immediately adjacent to the developed area of Rockland St Mary, with two strips of land extending between existing housing. This allocation is located approximately 1,400m to the west of the closest component of the Broadland SPA and Broadland Ramsar. The aerial photography indicates that there are a number of woodland components between the allocation and designated sites. In addition, the surrounding urban development is likely to provide a source of noise disturbance. There is unlikely to be loss of functionally linked / supporting habitat associated with any Habitats site. Likely significant habitat loss and fragmentation impacts have therefore been screened out.</p> <p>This policy is screened in under Category J (recreational disturbance) and Category L (hydrology).</p>	
30 - Roydon	No allocations	n/a	This section of the VCHAP cannot lead to development or other change and is therefore screened out under Category F.	Screened out.
31 - Saxlingham Nethergate	No allocations	n/a	This section of the VCHAP cannot lead to development or other change and is therefore screened out under Category F.	Screened out.
32 - Scole	No allocations	n/a	This section of the VCHAP cannot lead to development or other change and is therefore screened out under Category F.	Screened out.
33 - Seething and Mundham	Policy VC SEE1 - Land West of Mill Road, Seething	12 dwellings	<p>AQ: Given scale of development proposed in the VHCAP, air quality LSEs have been screened out for all policies alone and / or in-combination.</p> <p>Hydrology. This allocation is not located in the River Wensum SAC, Broads SAC or Broadland Ramsar hydrological catchment (see Appendix A) and therefore nutrient enrichment LSEs are unlikely and have been screened out. The site is however located in the hydrological catchment for other Habitats sites (Breydon Water SPA and Breydon Water Ramsar) and possible issues may include in-combination contaminated surface run off and /or increased demand for water. LSEs in-combination on hydrology have therefore been screened in.</p> <p>Public access and disturbance: This allocation is located within the Broads sites, the Wash sites, East Coast sites and Norfolk Fens sites recreational ZOIs for residential development (see Section 6.5 of main HRA report for more information on recreational ZOIs). As such, in-combination</p>	Screened in.

Village Cluster Number and Name	Policy Number and Name	Other relevant information	Pre-Screening for LSE	Pre-Screening Conclusion
			<p>recreational LSEs have been screened in. The site is located more than 400m from any Habitats site and therefore urbanisation impacts are screened out.</p> <p>Habitat loss and fragmentation: A review of aerial photography indicates that this allocation is comprised of a field immediately adjacent to the developed area of Seething. This allocation is located in the centre of the plan area. There is a large amount of road infrastructure, existing development and field boundaries and hedgerows between the site and closest component of the SPA and Ramsar. There is unlikely to be loss of functionally linked / supporting habitat associated with any Habitats site. Likely significant habitat loss and fragmentation impacts have therefore been screened out.</p> <p>This policy is screened in under Category I (recreational disturbance) and Category L (hydrology).</p>	
34 - Spooner Row and Suton	Policy VC SPO1 - Land west of Bunwell Road, Spooner Row	15 dwellings	<p>AQ: Given scale of development proposed in the VHCAP, air quality LSEs have been screened out for all policies alone and / or in-combination.</p> <p>Hydrology. This allocation is not located in the River Wensum SAC hydrological catchment but is within the Broads SAC or Broadland Ramsar hydrological catchment (see Appendix A) and therefore nutrient enrichment LSEs are likely and have been screened in. The site is also potentially located in the hydrological catchment for other Habitats sites (Broadland SPA, Breydon Water SPA and Breydon Water Ramsar) and possible issues may include in-combination contaminated surface run off and /or increased demand for water. LSEs alone on hydrology have therefore been screened in.</p> <p>Public access and disturbance: This allocation is located within the North Brecks sites, Broads sites, the Wash sites and the Norfolk Valley Fens sites recreational ZOIs for residential development (see Section 6.5 of main HRA report for more information on recreational ZOIs). As such, in-combination recreational LSEs have been screened in. The site is located more than 400m from any Habitats site and therefore urbanisation impacts are screened out.</p> <p>Habitat loss and fragmentation: A review of aerial photography indicates that this allocation is an arable field immediately adjacent to the developed area of Spooner Row. This allocation is located to the west of the plan area. There is a large amount of road infrastructure, existing development and field boundaries and hedgerows between the site and closest component of the SPA and Ramsar. There is unlikely to be loss of functionally linked / supporting habitat associated with any Habitats site. Likely significant habitat loss and fragmentation impacts have therefore been screened out.</p>	Screened in.

Village Cluster Number and Name	Policy Number and Name	Other relevant information	Pre-Screening for LSE	Pre-Screening Conclusion
			This policy is screened in under Category I (recreational disturbance and hydrology).	
34 - Spooner Row and Suton	Policy VC SPO2 Land South of Station Road, Spooner Row	25 dwellings	<p>AQ: Given scale of development proposed in the VHCAP, air quality LSEs have been screened out for all policies alone and / or in-combination.</p> <p>Hydrology. This allocation is not located in the River Wensum SAC hydrological catchment but is within the Broads SAC or Broadland Ramsar hydrological catchment (see Appendix A) and therefore nutrient enrichment LSEs are likely and have been screened in. The site is also potentially located in the hydrological catchment for other Habitats sites (Broadland SPA, Breydon Water SPA and Breydon Water Ramsar) and possible issues may include in-combination contaminated surface run off and /or increased demand for water. LSEs alone on hydrology have therefore been screened in.</p> <p>Public access and disturbance: This allocation is located within the North Brecks sites, Broads sites, the Wash sites and the Norfolk Valley Fens sites recreational ZOIs for residential development (see Section 6.5 of main HRA report for more information on recreational ZOIs). As such, in-combination recreational LSEs have been screened in. The site is located more than 400m from any Habitats site and therefore urbanisation impacts are screened out.</p> <p>Habitat loss and fragmentation: A review of aerial photography indicates that this allocation is an arable field immediately adjacent to the developed area of Spooner Row. This allocation is located to the west of the plan area. There is a large amount of road infrastructure, existing development and field boundaries and hedgerows between the site and closest component of the SPA and Ramsar. There is unlikely to be loss of functionally linked / supporting habitat associated with any Habitats site. Likely significant habitat loss and fragmentation impacts have therefore been screened out.</p> <p>This policy is screened in under Category I (recreational disturbance and hydrology).</p>	Screened in.
34 - Spooner Row and Suton	Policy VC SPO3 – Land at School Lane	7 dwellings	<p>AQ: Given scale of development proposed in the VHCAP, air quality LSEs have been screened out for all policies alone and / or in-combination.</p> <p>Hydrology. This allocation is not located in the River Wensum SAC hydrological catchment but is within the Broads SAC or Broadland Ramsar hydrological catchment (see Appendix A) and therefore nutrient enrichment LSEs are likely and have been screened in. The site is also potentially located in the hydrological catchment for other Habitats sites (Broadland SPA, Breydon Water SPA and Breydon Water Ramsar) and possible issues may include in-combination contaminated surface run off and /or increased demand for water. LSEs alone on hydrology have therefore been screened in.</p>	Screened in.

Village Cluster Number and Name	Policy Number and Name	Other relevant information	Pre-Screening for LSE	Pre-Screening Conclusion
			<p>Public access and disturbance: This allocation is located within the North Brecks sites, Broads sites, the Wash sites and the Norfolk Valley Fens sites recreational ZOIs for residential development (see Section 6.5 of main HRA report for more information on recreational ZOIs). As such, in-combination recreational LSEs have been screened in. The site is located more than 400m from any Habitats site and therefore urbanisation impacts are screened out.</p> <p>Habitat loss and fragmentation: A review of aerial photography indicates that this allocation is an arable field immediately adjacent to the developed area of Spooner Row. There is unlikely to be loss of functionally linked / supporting habitat associated with any Habitats site. This allocation is located to the west of the plan area. There is a large amount of road infrastructure, existing development and field boundaries and hedgerows between the site and closest component of the SPA and Ramsar. Likely significant habitat loss and fragmentation impacts have therefore been screened out.</p> <p>This policy is screened in under Category I (recreational disturbance and hydrology).</p>	
34 - Spooner Row and Sutton	Policy SPO4 – Land at Chapel Road	14 dwellings	<p>AQ: Given scale of development proposed in the VHCAP, air quality LSEs have been screened out for all policies alone and / or in-combination.</p> <p>Hydrology. This allocation is not located in the River Wensum SAC hydrological catchment but is within the Broads SAC or Broadland Ramsar hydrological catchment (see Appendix A) and therefore nutrient enrichment LSEs are likely and have been screened in. The site is also potentially located in the hydrological catchment for other Habitats sites (Broadland SPA, Breydon Water SPA and Breydon Water Ramsar) and possible issues may include in-combination contaminated surface run off and /or increased demand for water. LSEs alone on hydrology have therefore been screened in.</p> <p>Public access and disturbance: This allocation is located within the North Brecks sites, Broads sites, the Wash sites and the Norfolk Valley Fens sites recreational ZOIs for residential development (see Section 6.5 of main HRA report for more information on recreational ZOIs). As such, in-combination recreational LSEs have been screened in. The site is located more than 400m from any Habitats site and therefore urbanisation impacts are screened out.</p> <p>Habitat loss and fragmentation: A review of aerial photography indicates that this allocation is an arable field immediately adjacent to the developed area of Spooner Row. There is unlikely to be loss of functionally linked / supporting habitat associated with any Habitats site. This allocation is</p>	Screened in.

Village Cluster Number and Name	Policy Number and Name	Other relevant information	Pre-Screening for LSE	Pre-Screening Conclusion
			<p>located to the west of the plan area. There is a large amount of road infrastructure, existing development and field boundaries and hedgerows between the site and closest component of the SPA and Ramsar. Likely significant habitat loss and fragmentation impacts have therefore been screened out.</p> <p>This policy is screened in under Category I (recreational disturbance and hydrology).</p>	
<p>35 - Stoke Holy Cross, Shotesham and Caistor St Edmund & Bixley</p>	<p>Policy VC STO1 - Land north of Long Lane</p>	<p>25 dwellings</p>	<p>AQ: Given scale of development proposed in the VCHAP, air quality LSEs have been screened out for all policies alone and / or in-combination.</p> <p>Hydrology. This allocation is not located in the River Wensum SAC hydrological catchment but is within the Broads SAC or Broadland Ramsar hydrological catchment (see Appendix A) and therefore nutrient enrichment LSEs are likely and have been screened in. The site is also potentially located in the hydrological catchment for other Habitats sites (Broadland SPA, Breydon Water SPA and Breydon Water Ramsar) and possible issues may include in-combination contaminated surface run off and /or increased demand for water. LSEs alone on hydrology have therefore been screened in.</p> <p>Public access and disturbance: This allocation is located within the Broads sites, the Wash sites, East Coast sites and the Norfolk Valley Fens sites recreational ZOIs for residential development (see Section 6.5 of main HRA report for more information on recreational ZOIs). As such, in-combination recreational LSEs have been screened in. The site is located more than 400m from any Habitats site and therefore urbanisation impacts are screened out.</p> <p>Habitat loss and fragmentation: A review of aerial photography indicates that this allocation is an arable field immediately adjacent to the developed area of Stoke Holy Cross. This allocation is located towards the centre of the plan area. There is a large amount of road infrastructure, existing development and field boundaries and hedgerows between the site and closest component of the SPA and Ramsar. There is unlikely to be loss of functionally linked / supporting habitat associated with any Habitats site. Likely significant habitat loss and fragmentation impacts have therefore been screened out.</p> <p>This policy is screened in under Category I (recreational disturbance and hydrology).</p>	<p>Screened in.</p>
<p>36 - Surlingham,</p>	<p>No allocations</p>	<p>n/a</p>	<p>This section of the VCHAP cannot lead to development or other change and is therefore screened out under Category F.</p>	<p>Screened out.</p>

Village Cluster Number and Name	Policy Number and Name	Other relevant information	Pre-Screening for LSE	Pre-Screening Conclusion
Bramerton and Kirby Bedon				
37 - Tacolneston and Forncett End	Policy VC TAC1 - Land to the west of Norwich Road	25 dwellings	<p>AQ: Given scale of development proposed in the VHCAP, air quality LSEs have been screened out for all policies alone and / or in-combination.</p> <p>Hydrology. This allocation is not located in the River Wensum SAC hydrological catchment but is within the Broads SAC or Broadland Ramsar hydrological catchment (see Appendix A) and therefore nutrient enrichment LSEs are likely and have been screened in. The site is also potentially located in the hydrological catchment for other Habitats sites (Broadland SPA, Breydon Water SPA and Breydon Water Ramsar) and possible issues may include in-combination contaminated surface run off and /or increased demand for water. LSEs alone on hydrology have therefore been screened in.</p> <p>Public access and disturbance: This allocation is located within the Norfolk Brecks sites, the Broads sites, the Wash sites, and the Norfolk Valley Fens sites recreational ZOIs for residential development (see Section 6.5 of main HRA report for more information on recreational ZOIs). As such, in-combination recreational LSEs have been screened in. The site is located more than 400m from any Habitats site and therefore urbanisation impacts are screened out.</p> <p>Habitat loss and fragmentation: A review of aerial photography indicates that this allocation is a field immediately adjacent to the developed area of Tacolneston. This allocation is located to the west of the plan area. There is a large amount of road infrastructure, existing development and field boundaries and hedgerows between the site and closest component of the SPA and Ramsar. There is unlikely to be loss of functionally linked / supporting habitat associated with any Habitats site. Likely significant habitat loss and fragmentation impacts have therefore been screened out.</p> <p>This policy is screened in under Category I (recreational disturbance and hydrology).</p>	Screened in.
37 - Tacolneston and Forncett End	Policy VC TAC2 – Land adjacent The Fields	20 dwellings	<p>AQ: Given scale of development proposed in the VHCAP, air quality LSE have been screened out for all policies alone and / or in-combination.</p> <p>Hydrology. This allocation is not located in the River Wensum SAC hydrological catchment but is within the Broads SAC or Broadland Ramsar hydrological catchment (see Appendix A) and therefore nutrient enrichment LSEs are likely and have been screened in. The site is also potentially located in the hydrological catchment for other Habitats sites (Broadland SPA, Breydon Water SPA and</p>	Screened out.

Village Cluster Number and Name	Policy Number and Name	Other relevant information	Pre-Screening for LSE	Pre-Screening Conclusion
			<p>Breydon Water Ramsar) and possible issues may include in-combination contaminated surface run off and /or increased demand for water. LSEs alone on hydrology have therefore been screened in.</p> <p>Public access and disturbance: This allocation is located within the Norfolk Brecks sites, the Broads sites, the Wash sites, and the Norfolk Valley Fens sites recreational ZOIs for residential development (see Section 6.5 of main HRA report for more information on recreational ZOIs). As such, in-combination recreational LSEs have been screened in. The site is located more than 400m from any Habitats site and therefore urbanisation impacts are screened out.</p> <p>Habitat loss and fragmentation: A review of aerial photography indicates that this allocation is a grassed field bound on all sides by the developed area of Tacolneston. This allocation is located to the west of the plan area. There is a large amount of road infrastructure, existing development and field boundaries and hedgerows between the site and closest component of the SPA and Ramsar. There is unlikely to be loss of functionally linked / supporting habitat associated with any Habitats site. Likely significant habitat loss and fragmentation impacts have therefore been screened out.</p> <p>This policy is screened in under Category I (recreational disturbance and hydrology).</p>	
38 - Tasburgh	Policy VS TAS1 – North of Church Road, Tasburgh	25 dwellings	<p>AQ: Given scale of development proposed in the VHCAP, air quality LSEs have been screened out for all policies alone and / or in-combination.</p> <p>Hydrology. This allocation is not located in the River Wensum SAC hydrological catchment but is within the Broads SAC or Broadland Ramsar hydrological catchment (see Appendix A) and therefore nutrient enrichment LSEs are likely and have been screened in. The site is also potentially located in the hydrological catchment for other Habitats sites (Broadland SPA, Breydon Water SPA and Breydon Water Ramsar) and possible issues may include in-combination contaminated surface run off and /or increased demand for water. LSEs alone on hydrology have therefore been screened in.</p> <p>Public access and disturbance: This allocation is located within the Norfolk Brecks sites, the Broads sites, the Wash sites, and the Norfolk Valley Fens sites recreational ZOIs for residential development (see Section 6.5 of main HRA report for more information on recreational ZOIs). As such, in-combination recreational LSEs have been screened in. The site is located more than 400m from any Habitats site and therefore urbanisation impacts are screened out.</p> <p>Habitat loss and fragmentation: A review of aerial photography indicates that this allocation is an agricultural field immediately adjacent to the developed area of Tasburgh. This allocation is located towards the centre of the plan area. There is a large amount of road infrastructure, existing</p>	Screened out.

Village Cluster Number and Name	Policy Number and Name	Other relevant information	Pre-Screening for LSE	Pre-Screening Conclusion
			<p>development and field boundaries and hedgerows between the site and closest component of the SPA and Ramsar. There is unlikely to be loss of functionally linked / supporting habitat associated with any Habitats site. Likely significant habitat loss and fragmentation impacts have therefore been screened out.</p> <p>This policy is screened in under Category I (recreational disturbance and hydrology).</p>	
39 - Tharston, Hapton and Flordon	No allocations	n/a	This section of the VCHAP cannot lead to development or other change and is therefore screened out under Category F.	Screened out.
40 - Thurlton and Norton Subcourse	Policy VC THU1 - Land north of Blacksmiths Gardens, Thurlton	12 dwellings	<p>AQ: Given scale of development proposed in the VHCAP, air quality LSEs have been screened out for all policies alone and / or in-combination.</p> <p>Hydrology. This allocation is not located in the River Wensum SAC, Broads SAC or Broadland Ramsar hydrological catchment (see Appendix A) and therefore nutrient enrichment LSEs are unlikely and have been screened out. The site is however located in the hydrological catchment for other Habitats sites (Breydon Water SPA and Breydon Water Ramsar) and possible issues may include in-combination contaminated surface run off and /or increased demand for water. LSEs in-combination on hydrology have therefore been screened in.</p> <p>Public access and disturbance: This allocation is located within the Broads sites, the Wash sites and East Coast sites recreational ZOIs for residential development (see Section 6.5 of main HRA report for more information on recreational ZOIs). As such, in-combination recreational LSEs have been screened in. The site is located more than 400m from any Habitats site and therefore urbanisation impacts are screened out.</p> <p>Habitat loss and fragmentation: A review of aerial photography indicates that this allocation is comprised of an arable field immediately adjacent to the developed area of Thurlton which is likely to present a source of disturbance. This allocation is located approximately 2,900m to the south east of the closest component of the Broadland SPA and Broadland Ramsar. There are a number of minor roads, woodland blocks and field hedgerows which would restrict bird site lines between the allocation and designated sites. There is unlikely to be loss of functionally linked / supporting habitat associated with any Habitats site. Likely significant habitat loss and fragmentation impacts have therefore been screened out.</p> <p>This policy is screened in under Category I (recreational disturbance) and Category L (hydrology).</p>	Screened in.

Village Cluster Number and Name	Policy Number and Name	Other relevant information	Pre-Screening for LSE	Pre-Screening Conclusion
40 - Thurlton and Norton Subcourse	Policy VC THU2 - Land adjacent to Holly Cottage, west of Beccles Road, Thurlton	15 dwellings	<p>AQ: Given scale of development proposed in the VHCAP, air quality LSEs have been screened out for all policies alone and / or in-combination.</p> <p>Hydrology. This allocation is not located in the River Wensum SAC, Broads SAC or Broadland Ramsar hydrological catchment (see Appendix A) and therefore nutrient enrichment LSEs are unlikely and have been screened out. The site is however located in the hydrological catchment for other Habitats sites (Breydon Water SPA and Breydon Water Ramsar) and possible issues may include in-combination contaminated surface run off and /or increased demand for water. LSEs in-combination on hydrology have therefore been screened in.</p> <p>Public access and disturbance: This allocation is located within the Broads sites, the Wash sites and East Coast sites recreational ZOIs for residential development (see Section 6.5 of main HRA report for more information on recreational ZOIs). As such, in-combination recreational LSEs have been screened in. The site is located more than 400m from any Habitats site and therefore urbanisation impacts are screened out.</p> <p>Habitat loss and fragmentation: A review of aerial photography indicates that this allocation is a field immediately adjacent to the developed area of Thurlton which is likely to present a source of disturbance. This allocation is located approximately 2,900m to the south east of the closest component of the Broadland SPA and Broadland Ramsar. There are a number of minor roads, woodland blocks and field hedgerows which would restrict bird site lines between the allocation and designated sites. There is unlikely to be loss of functionally linked / supporting habitat associated with any Habitats site. Likely significant habitat loss and fragmentation impacts have therefore been screened out.</p> <p>This policy is screened in under Category I (recreational disturbance) and Category L (hydrology).</p>	Screened in.
41 - Thurton and Ashby St Mary	No allocations	n/a	This section of the VCHAP cannot lead to development or other change and is therefore screened out under Category F.	Screened out.
42 - Tivetshall St Mary and Tivetshall St Margaret	Policy VC TIV1 - Land at Pear Tree Farm, west of The Street	20 dwellings	<p>AQ: Given scale of development proposed in the VHCAP, air quality LSEs have been screened out for all policies alone and / or in-combination.</p> <p>Hydrology. This allocation is not located in the River Wensum SAC, Broads SAC or Broadland Ramsar hydrological catchment (see Appendix A) and therefore nutrient enrichment LSEs are unlikely and have been screened out. The site is however located in the hydrological catchment for</p>	Screened in.

Village Cluster Number and Name	Policy Number and Name	Other relevant information	Pre-Screening for LSE	Pre-Screening Conclusion
			<p>other Habitats sites (Breydon Water SPA and Breydon Water Ramsar) and possible issues may include in-combination contaminated surface run off and /or increased demand for water. LSEs in-combination on hydrology have therefore been screened in.</p> <p>Public access and disturbance: This allocation is located within the Norfolk Brecks sites, Broads sites, the Wash sites and Norfolk Valley Fens sites recreational ZOIs for residential development (see Section 6.5 of main HRA report for more information on recreational ZOIs). As such, in-combination recreational LSEs have been screened in. The site is located more than 400m from any Habitats site and therefore urbanisation impacts are screened out.</p> <p>Habitat loss and fragmentation: A review of aerial photography indicates that this allocation is comprised of some developed land and fields immediately adjacent to the developed area of Tivetshall. This allocation is located towards the south west of the plan area. There is a large amount of road infrastructure, existing development and field boundaries and hedgerows between the site and closest component of the SPA and Ramsar. There is unlikely to be loss of functionally linked / supporting habitat associated with any Habitats site. Likely significant habitat loss and fragmentation impacts have therefore been screened out.</p> <p>This policy is screened in under Category J (recreational disturbance) and Category L (hydrology).</p>	
<p>43 - Toft Monks, Aldeby, Haddiscoe, Wheatacre and Burgh St Peter</p>	<p>Policy VC HAD1 - Land south of Haddiscoe Manor Farm, Haddiscoe</p>	<p>25 dwellings</p>	<p>AQ: Given scale of development proposed in the VHCAP, air quality LSEs have been screened out for all policies alone and / or in-combination.</p> <p>Hydrology. This allocation is not located in the River Wensum SAC, Broads SAC or Broadland Ramsar hydrological catchment (see Appendix A) and therefore nutrient enrichment LSEs are unlikely and have been screened out. The site is however located in the hydrological catchment for other Habitats sites (Breydon Water SPA and Breydon Water Ramsar) and possible issues may include in-combination contaminated surface run off and /or increased demand for water. LSEs in-combination on hydrology have therefore been screened in.</p> <p>Public access and disturbance: This allocation is located within the Broads sites, the Wash sites and East Coast sites recreational ZOIs for residential development (see Section 6.5 of main HRA report for more information on recreational ZOIs). As such, in-combination recreational LSEs have been screened in. The site is located more than 400m from any Habitats site and therefore urbanisation impacts are screened out.</p> <p>Habitat loss and fragmentation: A review of aerial photography indicates that this allocation is comprised of an arable field immediately adjacent to the developed area of Haddiscoe. This</p>	<p>Screened in.</p>

Village Cluster Number and Name	Policy Number and Name	Other relevant information	Pre-Screening for LSE	Pre-Screening Conclusion
			allocation is located approximately 3,700m to the north of the closest component of the Broadland SPA and Ramsar designations. There is development, field boundaries and road infrastructure between the allocation and the designated sites which is likely to restrict bird sight lines and also provide a source of disturbance. There is unlikely to be loss of functionally linked / supporting habitat associated with any Habitats site. Likely significant habitat loss and fragmentation impacts have therefore been screened out. This policy is screened in under Category I (recreational disturbance) and Category L (hydrology).	
43 - Toft Monks, Aldeby, Haddiscoe, Wheatacre and Burgh St Peter	Policy VC BUR1 – Land north of Staithe Road, Burgh St Peter	12 dwellings	AQ: Given scale of development proposed in the VHCAP, air quality LSEs have been screened out for all policies alone and / or in-combination. Hydrology. This allocation is not located in the River Wensum SAC, Broads SAC or Broadland Ramsar hydrological catchment (see Appendix A) and therefore nutrient enrichment LSEs are unlikely and have been screened out. The site is however located in the hydrological catchment for other Habitats sites (Breydon Water SPA and Breydon Water Ramsar) and possible issues may include in-combination contaminated surface run off and /or increased demand for water. LSEs in-combination on hydrology have therefore been screened in. Public access and disturbance: This allocation is located within the Broads sites and East Coast sites recreational ZOIs for residential development (see Section 6.5 of main HRA report for more information on recreational ZOIs). As such, in-combination recreational LSEs have been screened in. The site is located more than 400m from any Habitats site and therefore urbanisation impacts are screened out. Habitat loss and fragmentation: A review of aerial photography indicates that this allocation is comprised of an arable field immediately adjacent to the developed area of Burgh St Peter. This allocation is located approximately 1,500m to the north of the closest component of the Broadland SPA and Ramsar designations. There are woodland blocks, field boundaries and road infrastructure between the allocation and the designated sites which is likely to restrict bird sight lines and also provide a source of disturbance. There is unlikely to be loss of functionally linked / supporting habitat associated with any Habitats site. Likely significant habitat loss and fragmentation impacts have therefore been screened out. This policy is screened in under Category I (recreational disturbance) and Category L (hydrology).	Screen in.
44 - Wacton	No allocations	n/a	This section of the VCHAP cannot lead to development or other change and is therefore screened out under Category F.	Screened out.

Village Cluster Number and Name	Policy Number and Name	Other relevant information	Pre-Screening for LSE	Pre-Screening Conclusion
45 - Wicklewood	Policy VC WIC1 - Land to the south of Wicklewood Primary School	30 dwellings	<p>AQ: Given scale of development proposed in the VHCAP, air quality LSEs have been screened out for all policies alone and / or in-combination.</p> <p>Hydrology. This allocation is not located in the River Wensum SAC hydrological catchment but is within the Broads SAC or Broadland Ramsar hydrological catchment (see Appendix A) and therefore nutrient enrichment LSEs are likely and have been screened in. The site is also potentially located in the hydrological catchment for other Habitats sites (Broadland SPA, Breydon Water SPA and Breydon Water Ramsar) and possible issues may include in-combination contaminated surface run off and /or increased demand for water. LSEs alone on hydrology have therefore been screened in.</p> <p>Public access and disturbance: This allocation is located within the North Brecks sites, Broads sites, the Wash sites, North Coasts sites and the Norfolk Valley Fens sites recreational ZOIs for residential development (see Section 6.5 of main HRA report for more information on recreational ZOIs). As such, in-combination recreational LSEs have been screened in. The site is located more than 400m from any Habitats site and therefore urbanisation impacts are screened out.</p> <p>Habitat loss and fragmentation: A review of aerial photography indicates that this allocation is an arable field immediately adjacent to the developed area of Wicklewood. This allocation is located towards the north west of the plan area. There is a large amount of road infrastructure, existing development and field boundaries and hedgerows between the site and closest component of the SPA and Ramsar. There is unlikely to be loss of functionally linked / supporting habitat associated with any Habitats site. Likely significant habitat loss and fragmentation impacts have therefore been screened out.</p> <p>This policy is screened in under Category I (recreational disturbance and hydrology).</p>	Screened in.
45 - Wicklewood	Policy VC WIC2 - Land off Hackford Road	12 dwellings	<p>AQ: Given scale of development proposed in the VHCAP, air quality LSEs have been screened out for all policies alone and / or in-combination.</p> <p>Hydrology. This allocation is not located in the River Wensum SAC hydrological catchment but is within the Broads SAC or Broadland Ramsar hydrological catchment (see Appendix A) and therefore nutrient enrichment LSEs are likely and have been screened in. The site is also potentially located in the hydrological catchment for other Habitats sites (Broadland SPA, Breydon Water SPA and Breydon Water Ramsar) and possible issues may include in-combination contaminated surface run off and /or increased demand for water. LSEs alone on hydrology have therefore been screened in.</p> <p>Public access and disturbance: This allocation is located within the North Brecks sites, Broads sites, the Wash sites, North Coasts sites and the Norfolk Valley Fens sites recreational ZOIs for residential</p>	Screened in.

Village Cluster Number and Name	Policy Number and Name	Other relevant information	Pre-Screening for LSE	Pre-Screening Conclusion
			<p>development (see Section 6.5 of main HRA report for more information on recreational ZOIs). As such, in-combination recreational LSEs have been screened in. The site is located more than 400m from any Habitats site and therefore urbanisation impacts are screened out.</p> <p>Habitat loss and fragmentation: A review of aerial photography indicates that this allocation is a field immediately adjacent to the developed area of Wicklewood. This allocation is located towards the north west of the plan area. There is a large amount of road infrastructure, existing development and field boundaries and hedgerows between the site and closest component of the SPA and Ramsar. There is unlikely to be loss of functionally linked / supporting habitat associated with any Habitats site. Likely significant habitat loss and fragmentation impacts have therefore been screened out.</p> <p>This policy is screened in under Category I (recreational disturbance and hydrology).</p>	
45 - Wicklewood	Policy VC WIC2 – Land at Hackford Road	6 dwellings	<p>AQ: Given scale of development proposed in the VHCAP, air quality LSEs have been screened out for all policies alone and / or in-combination.</p> <p>Hydrology. This allocation is not located in the River Wensum SAC hydrological catchment but is within the Broads SAC or Broadland Ramsar hydrological catchment (see Appendix A) and therefore nutrient enrichment LSEs are likely and have been screened in. The site is also potentially located in the hydrological catchment for other Habitats sites (Broadland SPA, Breydon Water SPA and Breydon Water Ramsar) and possible issues may include in-combination contaminated surface run off and /or increased demand for water. LSEs alone on hydrology have therefore been screened in.</p> <p>Public access and disturbance: This allocation is located within the North Brecks sites, Broads sites, the Wash sites, North Coast sites and the Norfolk Valley Fens sites recreational ZOIs for residential development (see Section 6.5 of main HRA report for more information on recreational ZOIs). As such, in-combination recreational LSEs have been screened in. The site is located more than 400m from any Habitats site and therefore urbanisation impacts are screened out.</p> <p>Habitat loss and fragmentation: A review of aerial photography indicates that this allocation is a field immediately adjacent to the developed area of Wicklewood. This allocation is located towards the north west of the plan area. There is a large amount of road infrastructure, existing development and field boundaries and hedgerows between the site and closest component of the SPA and Ramsar. There is unlikely to be loss of functionally linked / supporting habitat associated with any Habitats site. Likely significant habitat loss and fragmentation impacts have therefore been screened out.</p>	Screened in.

Village Cluster Number and Name	Policy Number and Name	Other relevant information	Pre-Screening for LSE	Pre-Screening Conclusion
			This policy is screened in under Category I (recreational disturbance and hydrology).	
46 - Winfarthing and Shelfanger	Policy VC WIN1 - Land west of Hall Road, Winfarthing	20 dwellings	<p>AQ: Given scale of development proposed in the VHCAP, air quality LSEs have been screened out for all policies alone and / or in-combination.</p> <p>Hydrology. This allocation is not located in the River Wensum SAC, Broads SAC or Broadland Ramsar hydrological catchment (see Appendix A) and therefore nutrient enrichment LSEs are unlikely and have been screened out. The site is however located in the hydrological catchment for other Habitats sites (Breydon Water SPA and Breydon Water Ramsar) and possible issues may include in-combination contaminated surface run off and /or increased demand for water. LSEs in-combination on hydrology have therefore been screened in.</p> <p>Public access and disturbance: This allocation is located within the Norfolk Brecks sites and Norfolk Valley Fens sites recreational ZOIs for residential development (see Section 6.5 of main HRA report for more information on recreational ZOIs). As such, in-combination recreational LSEs have been screened in. The site is located more than 400m from any Habitats site and therefore urbanisation impacts are screened out.</p> <p>Habitat loss and fragmentation: A review of aerial photography indicates that this allocation is comprised of an arable field immediately adjacent to the developed area of Winfarthing. There is unlikely to be loss of functionally linked / supporting habitat associated with any Habitats site. This allocation is located towards the south west of the plan area. There is a large amount of road infrastructure, existing development and field boundaries and hedgerows between the site and closest component of the SPA and Ramsar. Likely significant habitat loss and fragmentation impacts have therefore been screened out.</p> <p>This policy is screened in under Category I (recreational disturbance) and Category L (hydrology).</p>	Screened in.
46 - Winfarthing and Shelfanger	Policy VC WIN2 - Land off Mill Road	20 dwellings	<p>AQ: Given scale of development proposed in the VHCAP, air quality LSEs have been screened out for all policies alone and / or in-combination.</p> <p>Hydrology. This allocation is not located in the River Wensum SAC, Broads SAC or Broadland Ramsar hydrological catchment (see Appendix A) and therefore nutrient enrichment LSEs are unlikely and have been screened out. The site is however located in the hydrological catchment for other Habitats sites (Breydon Water SPA and Breydon Water Ramsar) and possible issues may include in-combination contaminated surface run off and /or increased demand for water. LSEs in-combination on hydrology have therefore been screened in.</p>	Screened in.

Village Cluster Number and Name	Policy Number and Name	Other relevant information	Pre-Screening for LSE	Pre-Screening Conclusion
			<p>Public access and disturbance: This allocation is located within the Norfolk Brecks sites the Broads sites and Norfolk Valley Fens sites recreational ZOIs for residential development (see Section 6.5 of main HRA report for more information on recreational ZOIs). As such, in-combination recreational LSEs have been screened in. The site is located more than 400m from any Habitats site and therefore urbanisation impacts are screened out.</p> <p>Habitat loss and fragmentation: A review of aerial photography indicates that this allocation is comprised of an arable field immediately adjacent to the developed area of Winfarthing. This allocation is located towards the south west of the plan area. There is a large amount of road infrastructure, existing development and field boundaries and hedgerows between the site and closest component of the SPA and Ramsar. There is unlikely to be loss of functionally linked / supporting habitat associated with any Habitats site. Likely significant habitat loss and fragmentation impacts have therefore been screened out.</p> <p>This policy is screened in under Category I (recreational disturbance) and Category L (hydrology).</p>	
47 - Woodton and Bedingham	Policy VC WOO1 - Land south of Church Road, Woodton	50 dwellings	<p>AQ: Given scale of development proposed in the VHCAP, air quality LSEs have been screened out for all policies alone and / or in-combination.</p> <p>Hydrology. This allocation is not located in the River Wensum SAC, Broads SAC or Broadland Ramsar hydrological catchment (see Appendix A) and therefore nutrient enrichment LSEs are unlikely and have been screened out. The site is however located in the hydrological catchment for other Habitats sites (Breydon Water SPA and Breydon Water Ramsar) and possible issues may include in-combination contaminated surface run off and /or increased demand for water. LSEs in-combination on hydrology have therefore been screened in.</p> <p>Public access and disturbance: This allocation is located within the Broads sites, the Wash, East Coast sites and Norfolk Valley Fens sites recreational ZOIs for residential development (see Section 6.5 of main HRA report for more information on recreational ZOIs). As such, in-combination recreational LSEs have been screened in. The site is located more than 400m from any Habitats site and therefore urbanisation impacts are screened out.</p> <p>Habitat loss and fragmentation: A review of aerial photography indicates that this allocation is comprised of an arable field immediately adjacent to the developed area of Woodton. This allocation is located towards the centre of the plan area. There is a large amount of road infrastructure, existing development and field boundaries and hedgerows between the site and closest component of the SPA and Ramsar. There is unlikely to be loss of functionally linked /</p>	Screened in.

Village Cluster Number and Name	Policy Number and Name	Other relevant information	Pre-Screening for LSE	Pre-Screening Conclusion
			<p>supporting habitat associated with any Habitats site. Likely significant habitat loss and fragmentation impacts have therefore been screened out. This policy is screened in under Category I (recreational disturbance) and Category L (hydrology).</p>	

Village Cluster Number and Name	Policy Number and Name	Other relevant information	Pre-Screening for LSE	Pre-Screening Conclusion
48 - Wrenningham, Ashwellthorpe and Fundenhall	Policy VC ASH1 - Land west of New Road, Ashwellthorpe	15 dwellings	<p>AQ: Given scale of development proposed in the VHCAP, air quality LSEs have been screened out for all policies alone and / or in-combination.</p> <p>Hydrology. This allocation is not located in the River Wensum SAC hydrological catchment but is within the Broads SAC or Broadland Ramsar hydrological catchment (see Appendix A) and therefore nutrient enrichment LSEs are likely and have been screened in. The site is also potentially located in the hydrological catchment for other Habitats sites (Broadland SPA, Breydon Water SPA and Breydon Water Ramsar) and possible issues may include in-combination contaminated surface run off and /or increased demand for water. LSEs alone on hydrology have therefore been screened in.</p> <p>Public access and disturbance: This allocation is located within the North Brecks sites, Broads sites, the Wash sites and the Norfolk Valley Fens sites recreational ZOIs for residential development (see Section 6.5 of main HRA report for more information on recreational ZOIs). As such, in-combination recreational LSEs have been screened in. The site is located more than 400m from any Habitats site and therefore urbanisation impacts are screened out.</p> <p>Habitat loss and fragmentation: A review of aerial photography indicates that this allocation is an arable field immediately adjacent to the developed area of Ashwellthorpe. This allocation is located towards the west of the plan area. There is a large amount of road infrastructure, existing development and field boundaries and hedgerows between the site and closest component of the SPA and Ramsar. There is unlikely to be loss of functionally linked / supporting habitat associated with any Habitats site. Likely significant habitat loss and fragmentation impacts have therefore been screened out.</p> <p>This policy is screened in under Category I (recreational disturbance and hydrology).</p>	Screened in.

Village Cluster Number and Name	Policy Number and Name	Other relevant information	Pre-Screening for LSE	Pre-Screening Conclusion
Settlement boundaries	n/a	n/a	<p>The VCHAP defines Settlement Limits for the villages within the above 48 village clusters, making provision for further smaller sites and incorporating revisions to reflect development that has occurred, or has been permitted since the boundaries were last updated.</p> <p>Settlement Limit Extensions are for sites smaller than 12 dwellings, and will not count towards the 1,200 dwelling requirement, but will help ensure that the 'windfall allowance' in the GNLP is achieved.</p> <p>Any windfall development has the potential to have a LSE upon habitats sites which are hydrologically linked to the plan area or within recreational zones of influence. The exact location and nature of windfall development is unknown at this stage. Taking a precautionary approach, such extensions to settlement boundaries have been screened into the HRA process for further consideration under Category I (recreational disturbance and hydrology).</p>	Screen in